
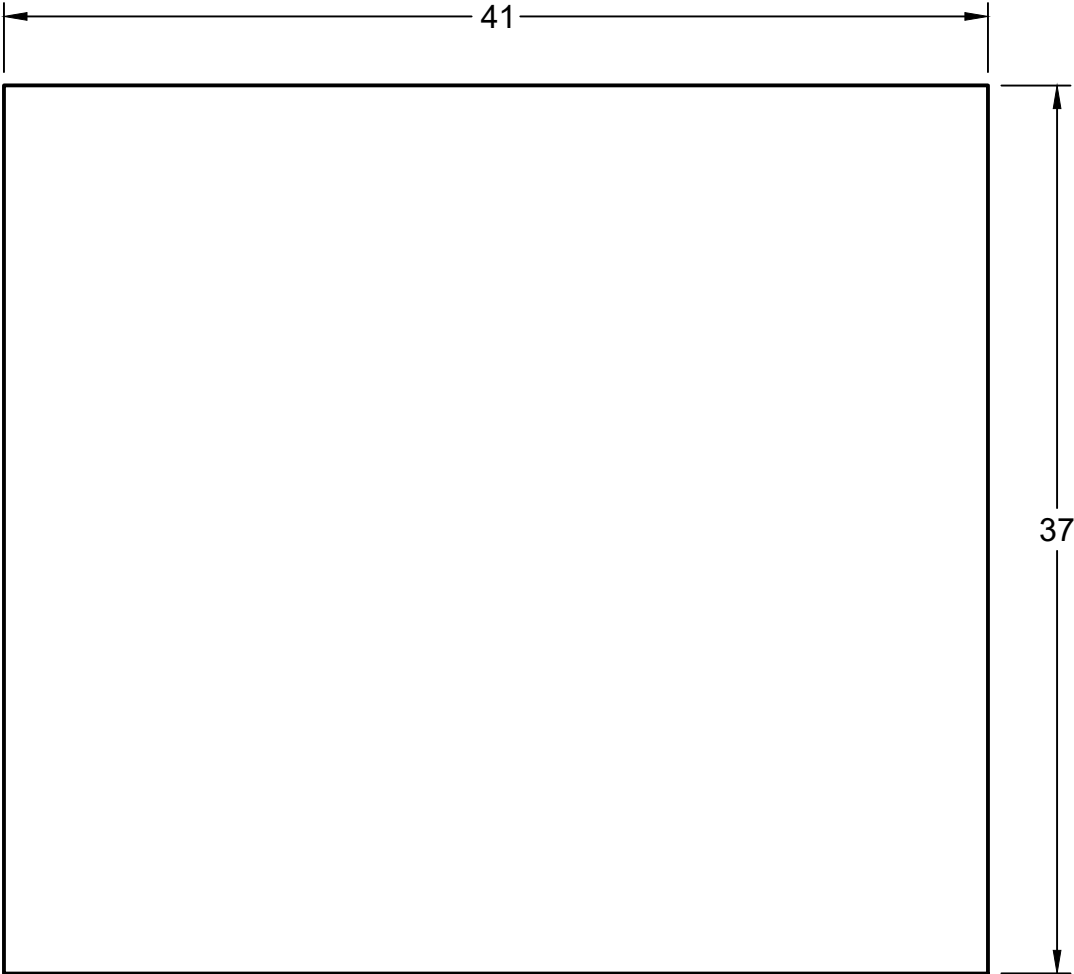

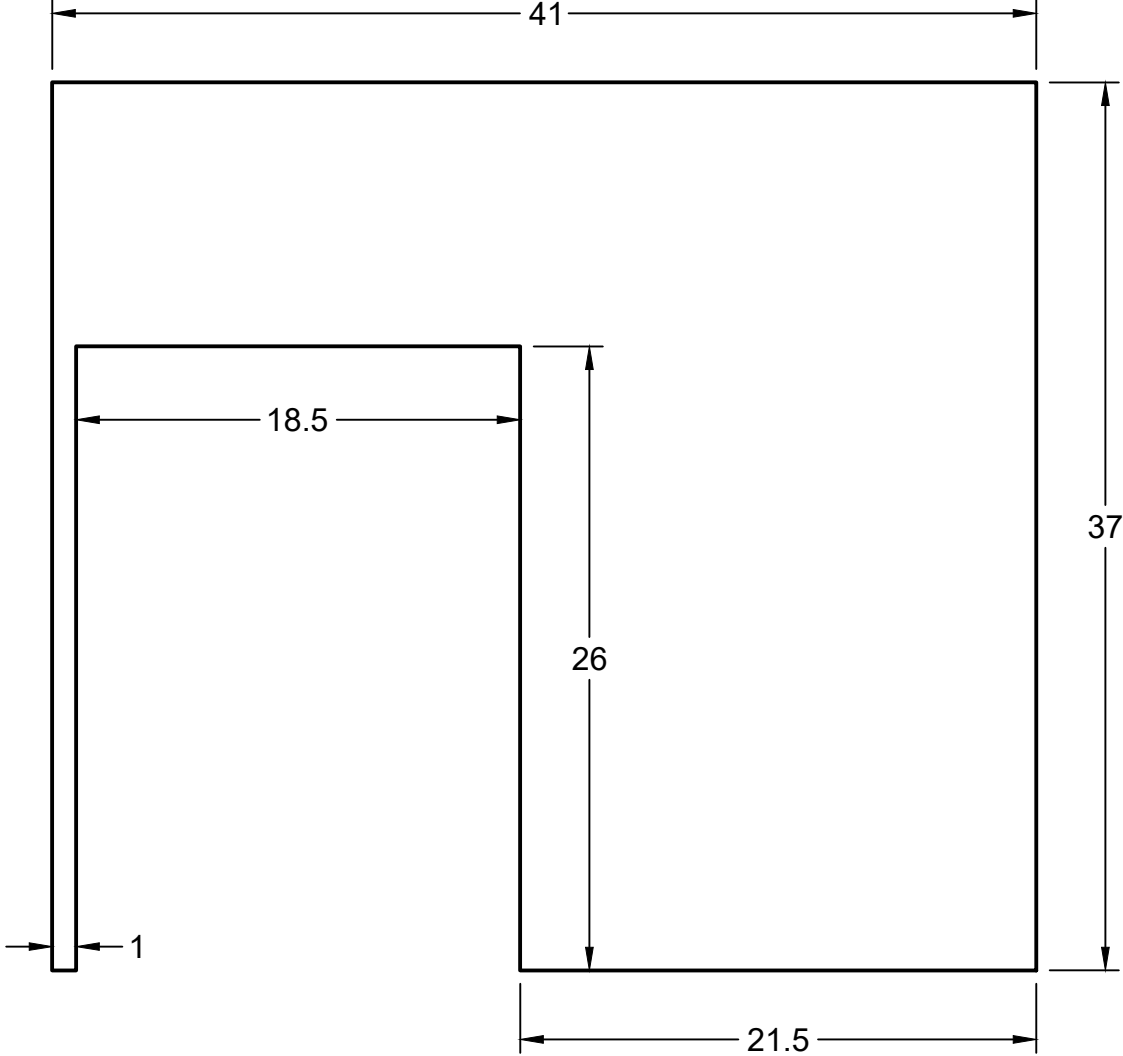



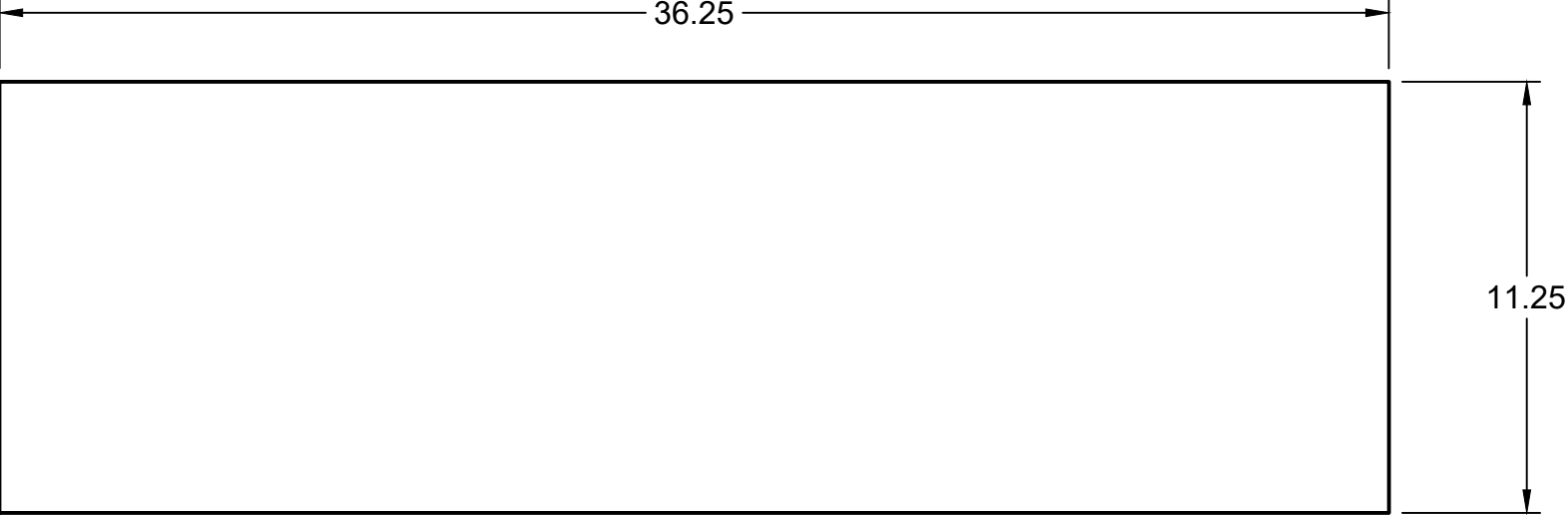
THE INFORMATION CONTAINED IN THIS DRAWING IS THE SOLE PROPERTY OF SHAWNEE HILLS WORKSHOP,LLC. ANY REPRODUCTION IN PART OR WHOLE WITHOUT WRITTEN PERMISSION IS PROHIBITED.		DIMENSIONS ARE IN INCHES		PROJECT 5th Gen 4Runner Drawer System		
				TITLE Build Plans		
 SHAWNEE HILLS WORKSHOP		SIZE B		DWG NO		REV
		DRAWN Wesley Harville 11/24/2021		SCALE 1:20		WEIGHT SHEET 1/27



<div>THE INFORMATION CONTAINED IN THIS DRAWING IS THE SOLE PROPERTY OF SHAWNEE HILLS WORKSHOP,LLC. ANY REPRODUCTION IN PART OR WHOLE WITHOUT WRITTEN PERMISSION IS PROHIBITED.</div> <div><div>SHAWNEE HILLS WORKSHOP</div></div>	DIMENSIONS ARE IN INCHES	PROJECT 5th Gen 4Runner Drawer System		
		TITLE Bottom Panel		
	SIZE B	DWG NO		REV
DRAWN	Wesley Harville 11/24/2021	SCALE 1:8	WEIGHT	SHEET 2/27



<div>THE INFORMATION CONTAINED IN THIS DRAWING IS THE SOLE PROPERTY OF SHAWNEE HILLS WORKSHOP,LLC. ANY REPRODUCTION IN PART OR WHOLE WITHOUT WRITTEN PERMISSION IS PROHIBITED.</div> <div><div>SHAWNEE HILLS WORKSHOP</div></div>	DIMENSIONS ARE IN INCHES	PROJECT 5th Gen 4Runner Drawer System		
		TITLE Top Panel		
	SIZE B	DWG NO		REV
DRAWN	Wesley Harville 11/24/2021	SCALE 1:8	WEIGHT	SHEET 3/27



THE INFORMATION
CONTAINED IN THIS
DRAWING IS THE SOLE
PROPERTY OF
SHAWNEE HILLS
WORKSHOP,LLC. ANY
REPRODUCTION IN PART
OR WHOLE WITHOUT
WRITTEN PERMISSION IS
PROHIBITED.

DIMENSIONS
ARE IN
INCHES



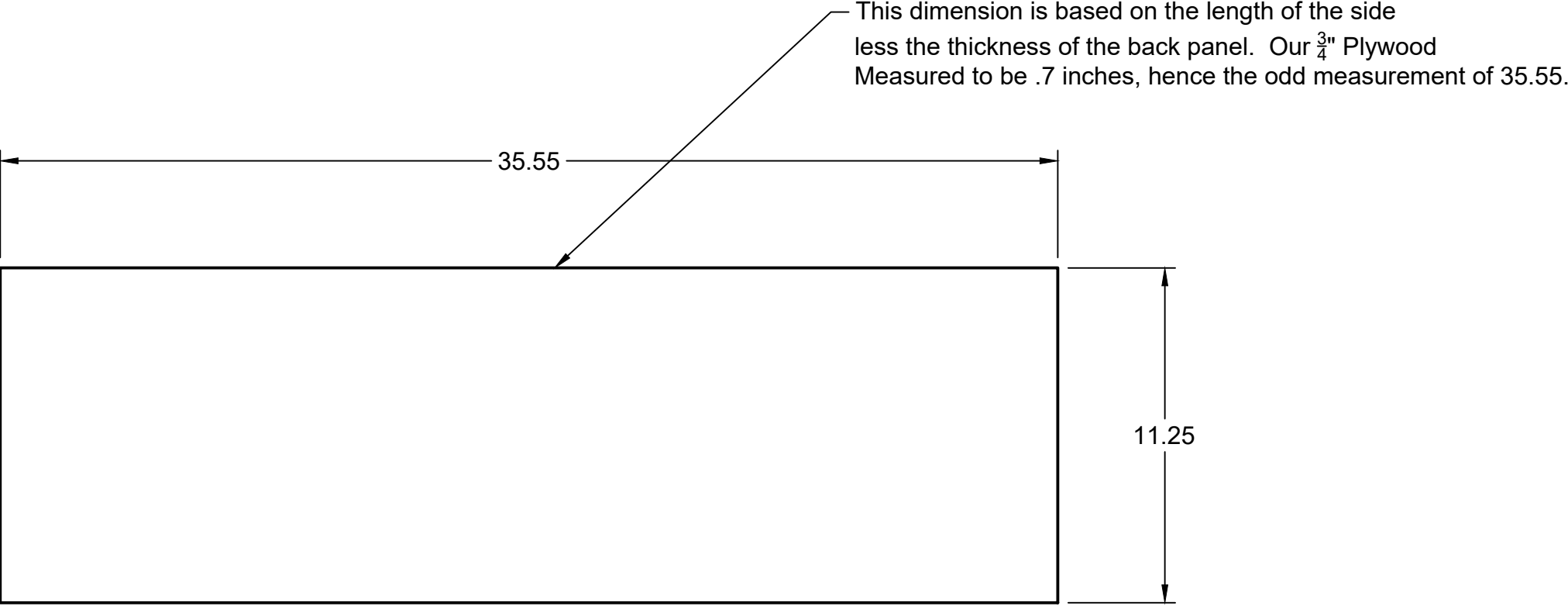
SHAWNEE HILLS
WORKSHOP


PROJECT
5th Gen 4Runner Drawer System

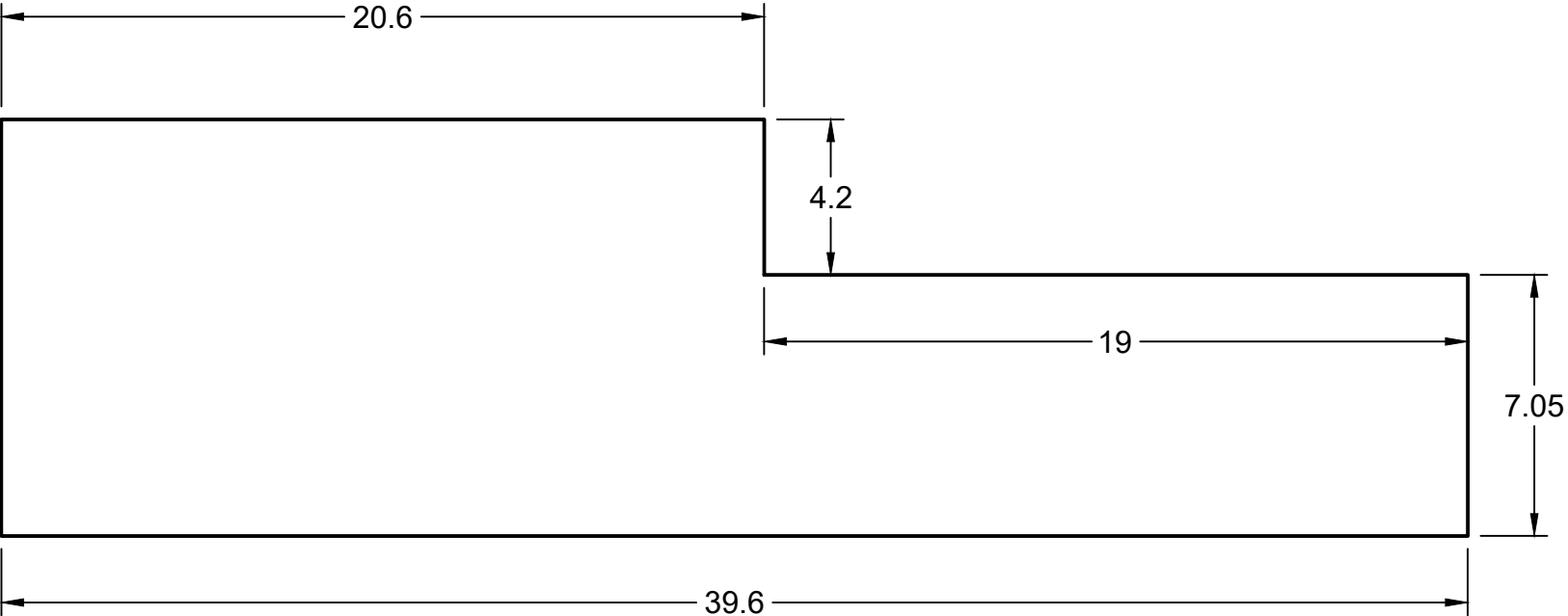
TITLE
Left and Right Sides


SIZE	DWG NO	REV
B		

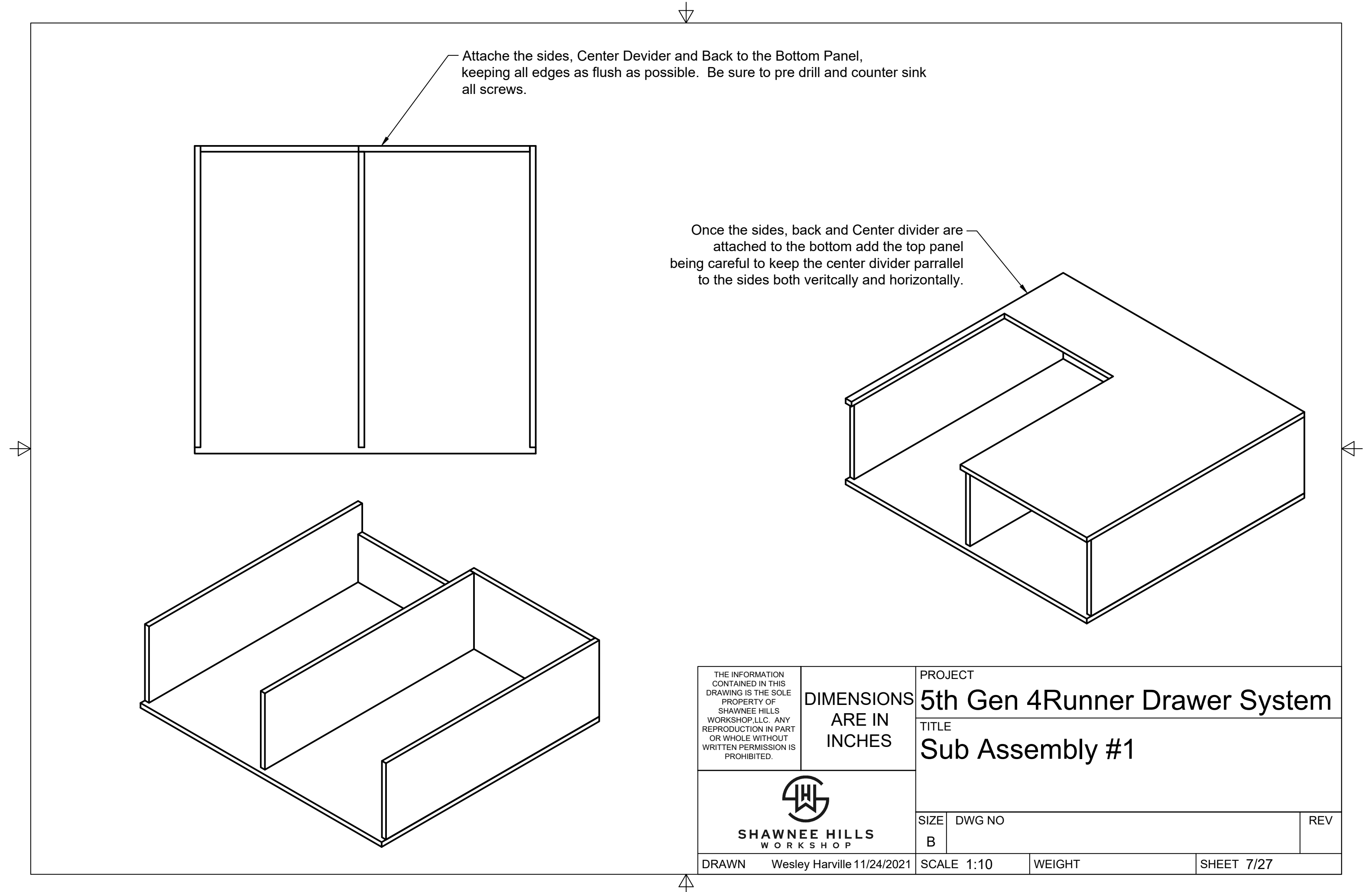
DRAWN	Wesley Harville 11/24/2021	SCALE 1:5	WEIGHT	SHEET 4/27
-------	----------------------------	-----------	--------	------------



<div>THE INFORMATION CONTAINED IN THIS DRAWING IS THE SOLE PROPERTY OF SHAWNEE HILLS WORKSHOP,LLC. ANY REPRODUCTION IN PART OR WHOLE WITHOUT WRITTEN PERMISSION IS PROHIBITED.</div>	DIMENSIONS ARE IN INCHES	PROJECT 5th Gen 4Runner Drawer System			
		TITLE Center Divider			
	<div> SHAWNEE HILLS WORKSHOP</div>	SIZE B	DWG NO		
DRAWN		Wesley Harville 11/24/2021		SCALE 1:5	WEIGHT



<div>THE INFORMATION CONTAINED IN THIS DRAWING IS THE SOLE PROPERTY OF SHAWNEE HILLS WORKSHOP,LLC. ANY REPRODUCTION IN PART OR WHOLE WITHOUT WRITTEN PERMISSION IS PROHIBITED.</div> <div><div>SHAWNEE HILLS WORKSHOP</div></div>		<div>DIMENSIONS ARE IN INCHES</div>		PROJECT 5th Gen 4Runner Drawer System		
				TITLE Back Panel		
		SIZE B	DWG NO			REV
DRAWN	Wesley Harville 11/24/2021		SCALE 1:5		WEIGHT	SHEET 6/27



Attache the sides, Center Devider and Back to the Bottom Panel, keeping all edges as flush as possible. Be sure to pre drill and counter sink all screws.

Once the sides, back and Center divider are attached to the bottom add the top panel being careful to keep the center divider parrallel to the sides both veritcally and horizontally.

THE INFORMATION
CONTAINED IN THIS
DRAWING IS THE SOLE
PROPERTY OF
SHAWNEE HILLS
WORKSHOP,LLC. ANY
REPRODUCTION IN PART
OR WHOLE WITHOUT
WRITTEN PERMISSION IS
PROHIBITED.

**DIMENSIONS
ARE IN
INCHES**



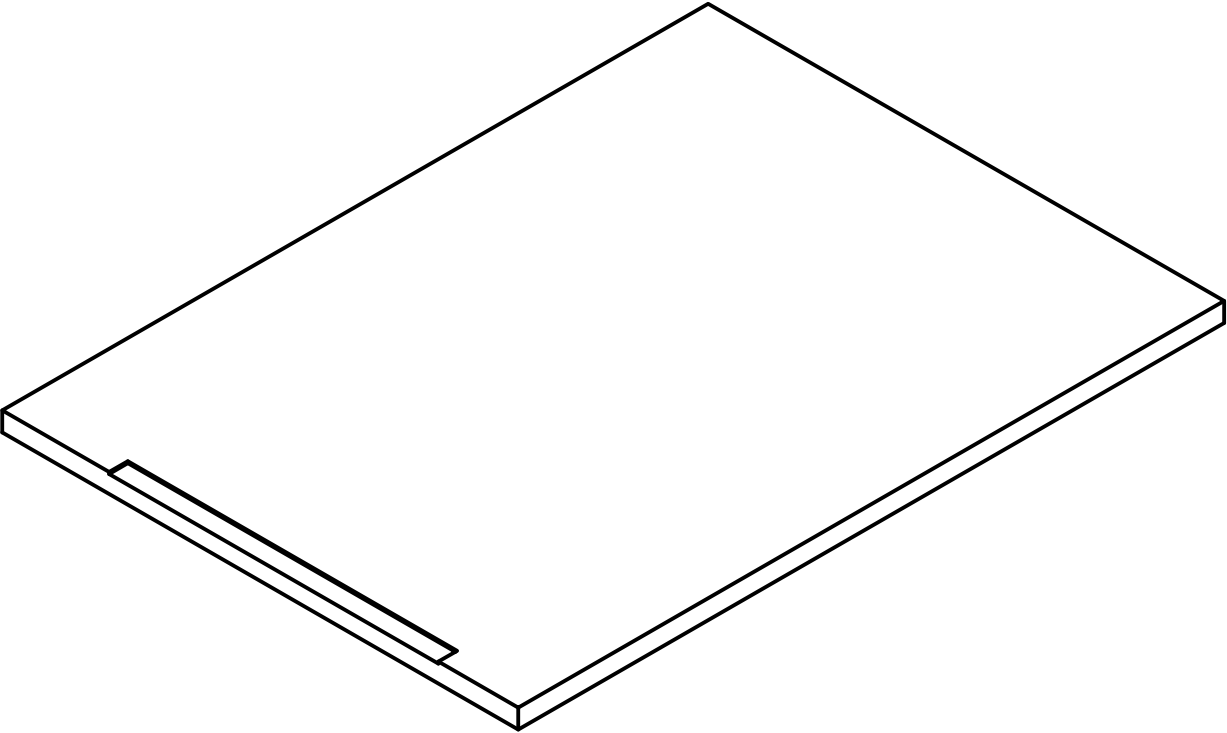
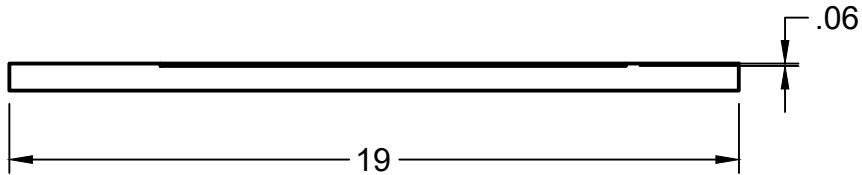
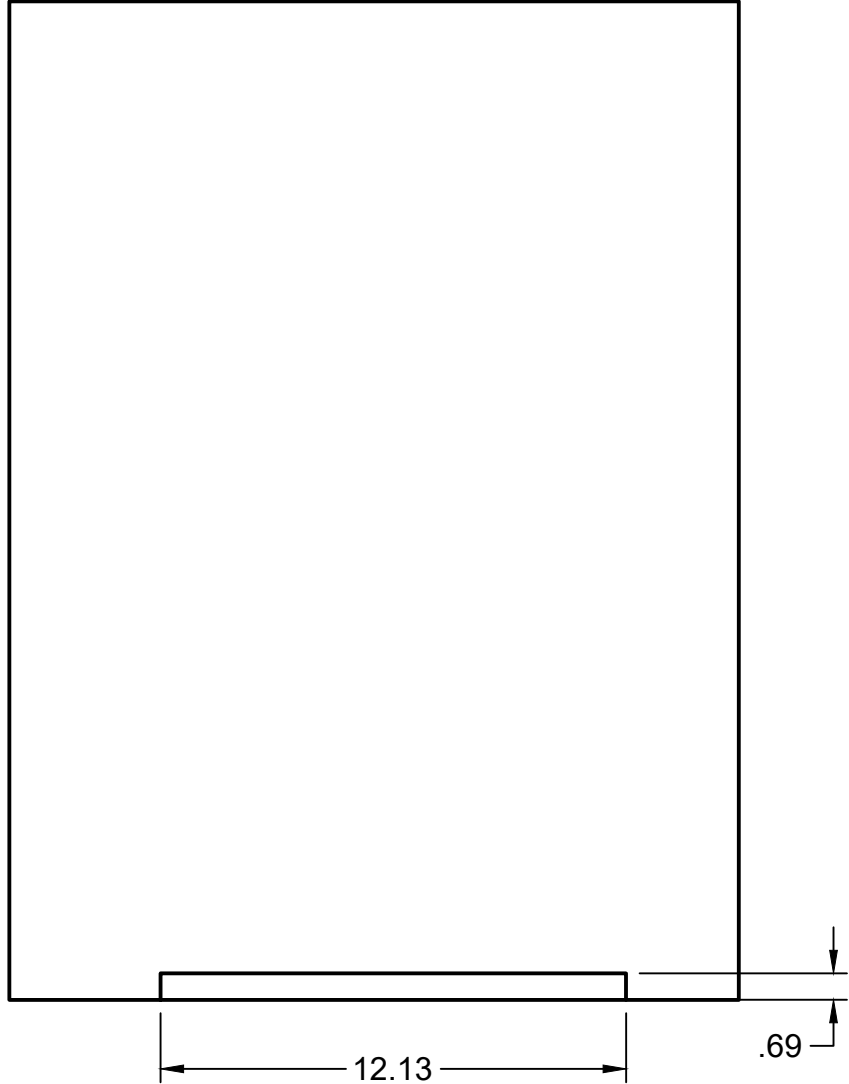
**SHAWNEE HILLS
WORKSHOP**

PROJECT
5th Gen 4Runner Drawer System

TITLE
Sub Assembly #1

SIZE	DWG NO	REV
B		

DRAWN	Wesley Harville 11/24/2021	SCALE 1:10	WEIGHT	SHEET 7/27
-------	----------------------------	------------	--------	------------



THE INFORMATION
CONTAINED IN THIS
DRAWING IS THE SOLE
PROPERTY OF
SHAWNEE HILLS
WORKSHOP,LLC. ANY
REPRODUCTION IN PART
OR WHOLE WITHOUT
WRITTEN PERMISSION IS
PROHIBITED.

DIMENSIONS
ARE IN
INCHES




SHAWNEE HILLS
WORKSHOP

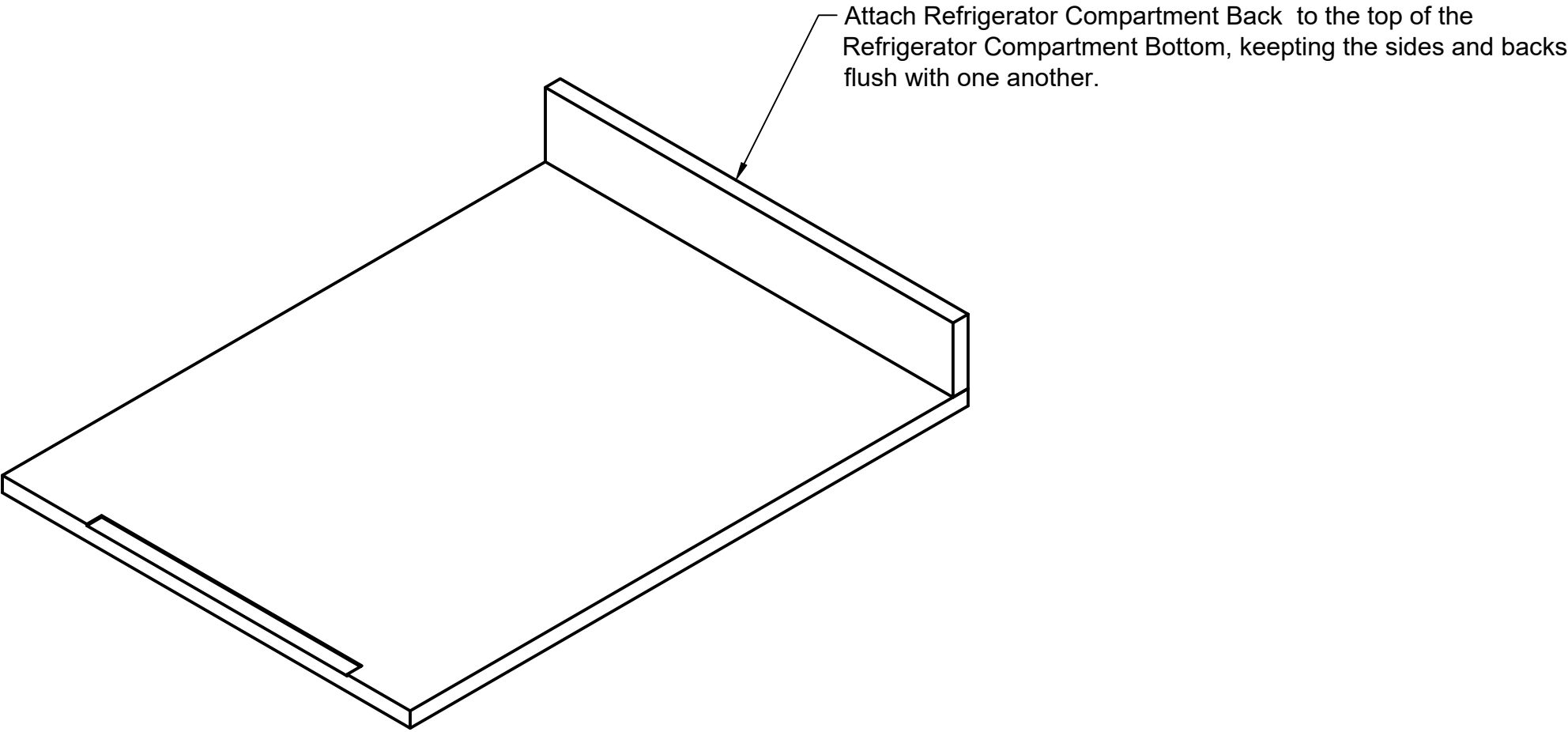
PROJECT
5th Gen 4Runner Drawer System
TITLE
Refrigerator Compartment Bottom


SIZE B	DWG NO	REV
-----------	--------	-----

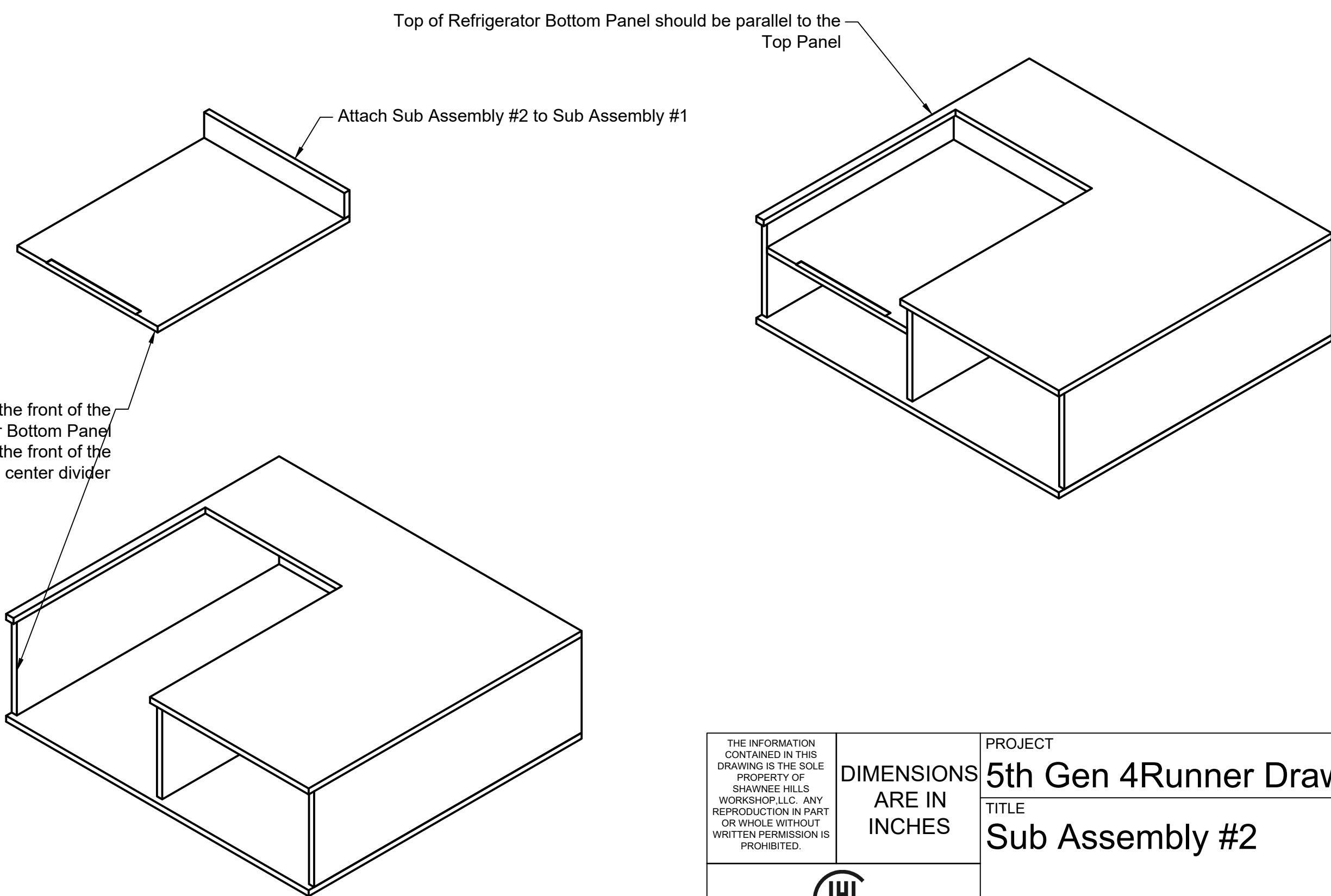
DRAWN	Wesley Harville 11/24/2021	SCALE 1:5	WEIGHT	SHEET 8/27
-------	----------------------------	-----------	--------	------------




<div>THE INFORMATION CONTAINED IN THIS DRAWING IS THE SOLE PROPERTY OF SHAWNEE HILLS WORKSHOP,LLC. ANY REPRODUCTION IN PART OR WHOLE WITHOUT WRITTEN PERMISSION IS PROHIBITED.</div> <div><div>SHAWNEE HILLS WORKSHOP</div></div>	DIMENSIONS ARE IN INCHES	PROJECT 5th Gen 4Runner Drawer System		
		TITLE Refrigerator Compartment Back		
	SIZE B	DWG NO		REV
DRAWN	Wesley Harville 11/24/2021	SCALE 1:5	WEIGHT	SHEET 9/27



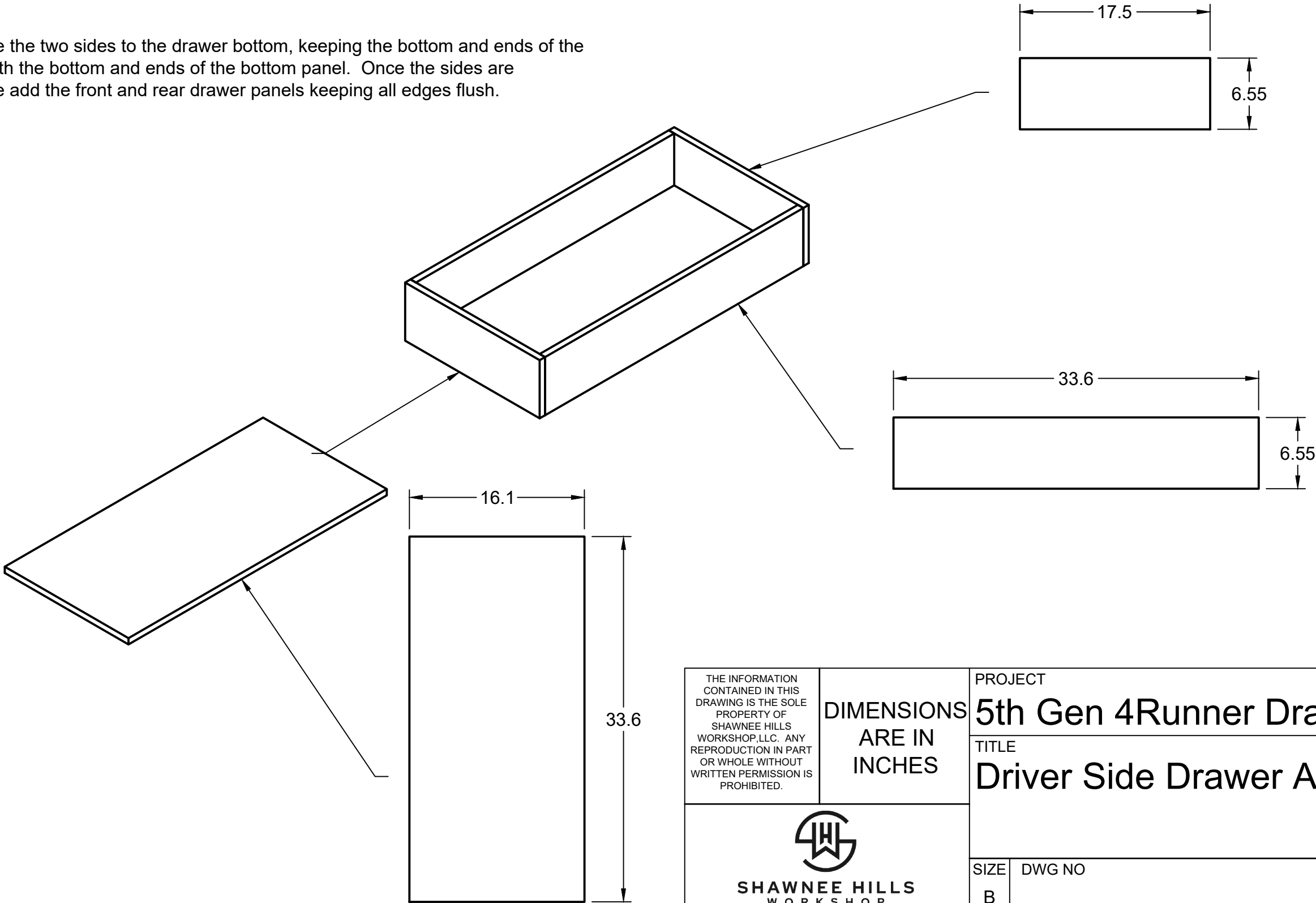
<div>THE INFORMATION CONTAINED IN THIS DRAWING IS THE SOLE PROPERTY OF SHAWNEE HILLS WORKSHOP,LLC. ANY REPRODUCTION IN PART OR WHOLE WITHOUT WRITTEN PERMISSION IS PROHIBITED.</div>	DIMENSIONS ARE IN INCHES	PROJECT 5th Gen 4Runner Drawer System			
		TITLE Sub Assembly #2			
	<div><div>SHAWNEE HILLS WORKSHOP</div></div>	SIZE B	DWG NO		
DRAWN		Wesley Harville 11/24/2021		SCALE 1:5	WEIGHT




THE INFORMATION CONTAINED IN THIS DRAWING IS THE SOLE PROPERTY OF SHAWNEE HILLS WORKSHOP,LLC. ANY REPRODUCTION IN PART OR WHOLE WITHOUT WRITTEN PERMISSION IS PROHIBITED.	DIMENSIONS ARE IN INCHES	PROJECT 5th Gen 4Runner Drawer System				
		TITLE Sub Assembly #2				
 SHAWNEE HILLS WORKSHOP		SIZE	DWG NO			REV
		B				
DRAWN	Wesley Harville 11/24/2021	SCALE	1:10	WEIGHT	SHEET 11/27	

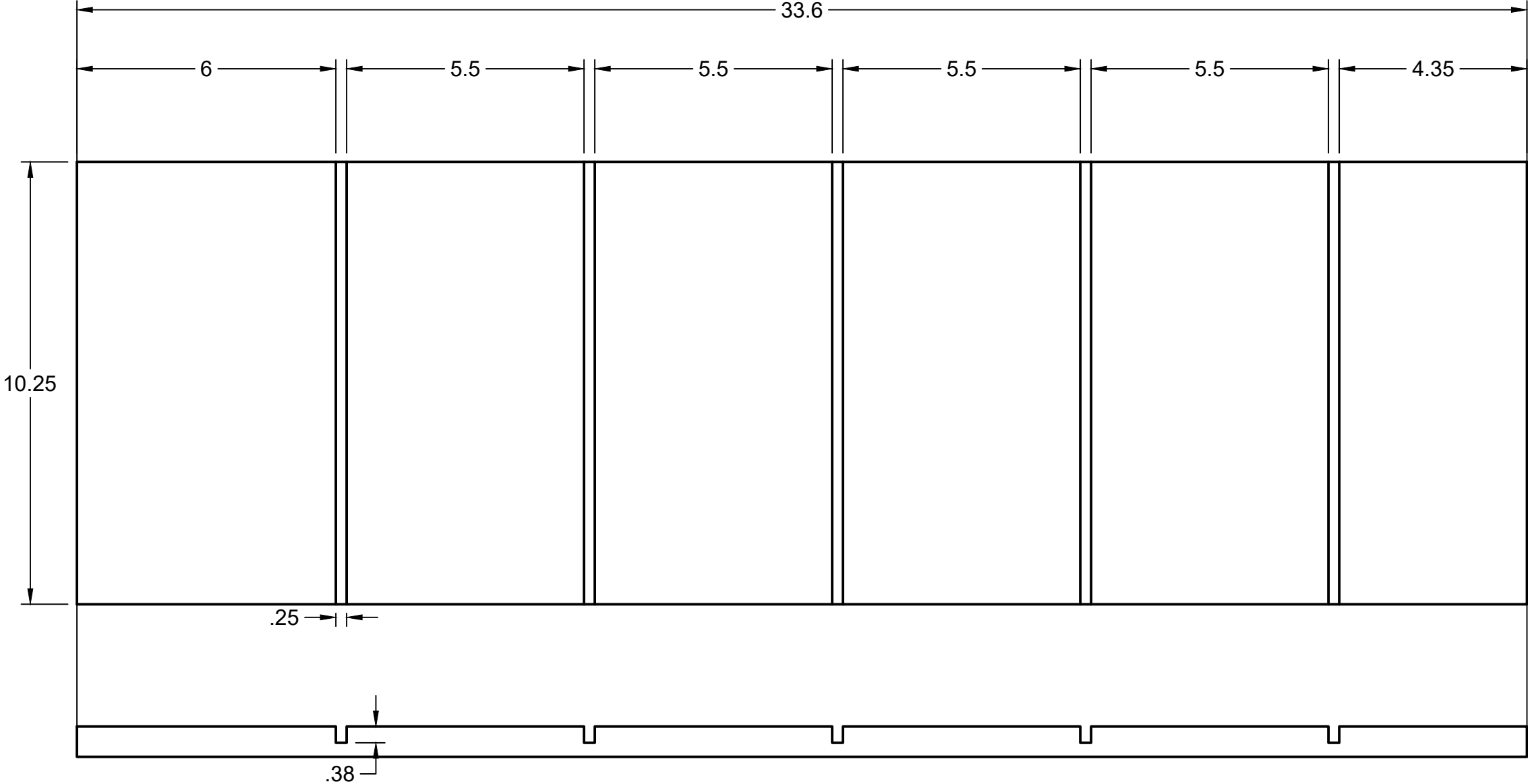
1. Our Finished Drawer size is based upon leaving $\frac{3}{4}$ " gaps on either side between the drawer and the driver side panel and center divider because the slides we used require $\frac{3}{4}$ ". Please refer to the instructions with your hardware and adjust the width of your drawer accordingly.

2. Assemble the two sides to the drawer bottom, keeping the bottom and ends of the side flush with the bottom and ends of the bottom panel. Once the sides are attached, the add the front and rear drawer panels keeping all edges flush.



THE INFORMATION CONTAINED IN THIS DRAWING IS THE SOLE PROPERTY OF SHAWNEE HILLS WORKSHOP,LLC. ANY REPRODUCTION IN PART OR WHOLE WITHOUT WRITTEN PERMISSION IS PROHIBITED.		DIMENSIONS ARE IN INCHES		PROJECT 5th Gen 4Runner Drawer System		
				TITLE Driver Side Drawer Assembly		
 SHAWNEE HILLS WORKSHOP		SIZE B		DWG NO		REV
		DRAWN Wesley Harville 11/24/2021		SCALE 1:10	WEIGHT	SHEET 12/27

It is best to keep the drawers as one larger piece that is 34.6" long and approximately 21" wide. Then cut the grooves on the panel before ripping it into two equal halves of 10.25" so you know all the grooves will line up. The spacing of the grooves are not critical, you can add as many or as few as you like, or forgo them all together.



THE INFORMATION
CONTAINED IN THIS
DRAWING IS THE SOLE
PROPERTY OF
SHAWNEE HILLS
WORKSHOP, LLC. ANY
REPRODUCTION IN PART
OR WHOLE WITHOUT
WRITTEN PERMISSION IS
PROHIBITED.

**DIMENSIONS
ARE IN
INCHES**



**SHAWNEE HILLS
WORKSHOP**

PROJECT
5th Gen 4Runner Drawer System

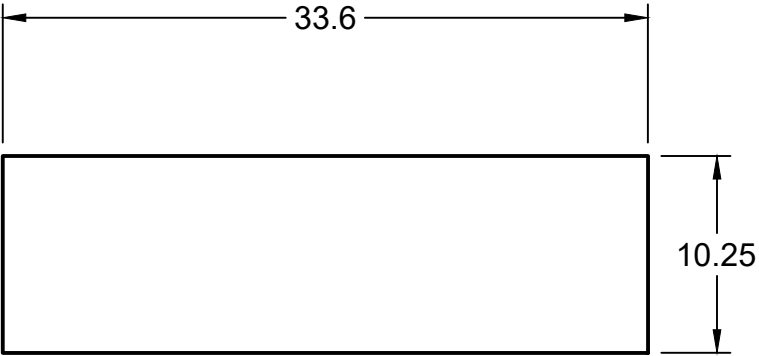
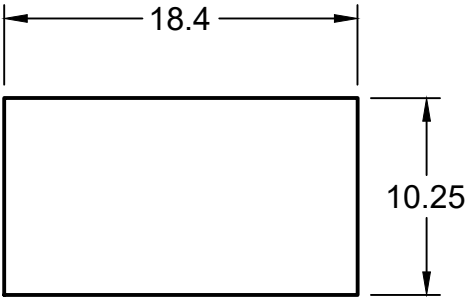
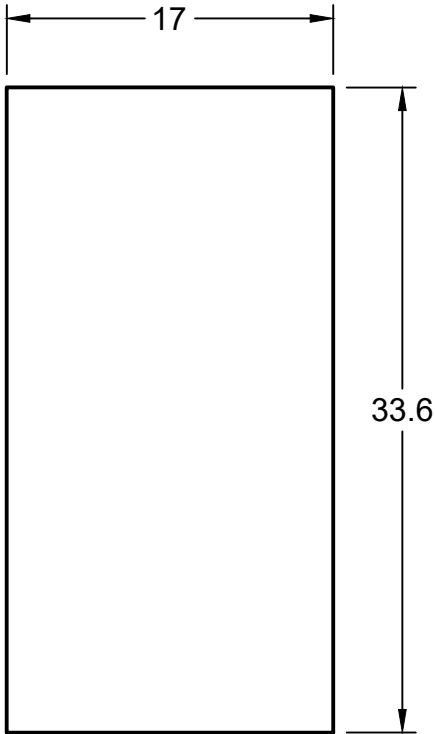
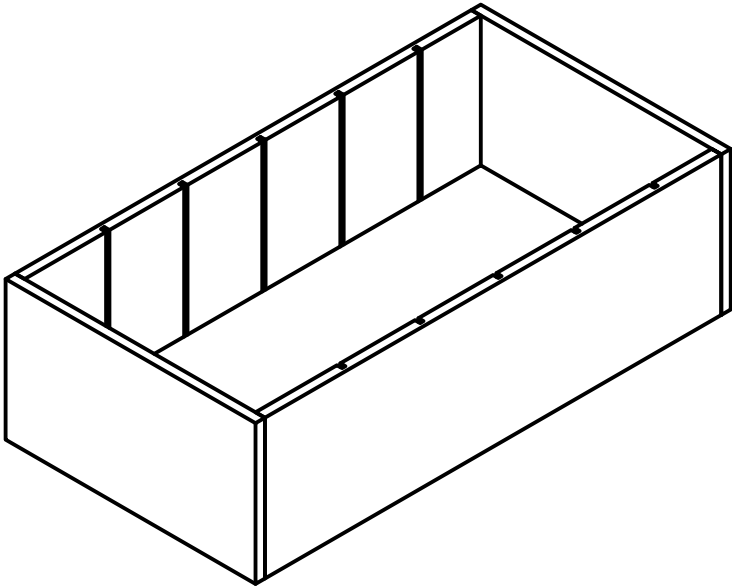
TITLE
Passenger Drawer Sides

SIZE	DWG NO	REV
B		

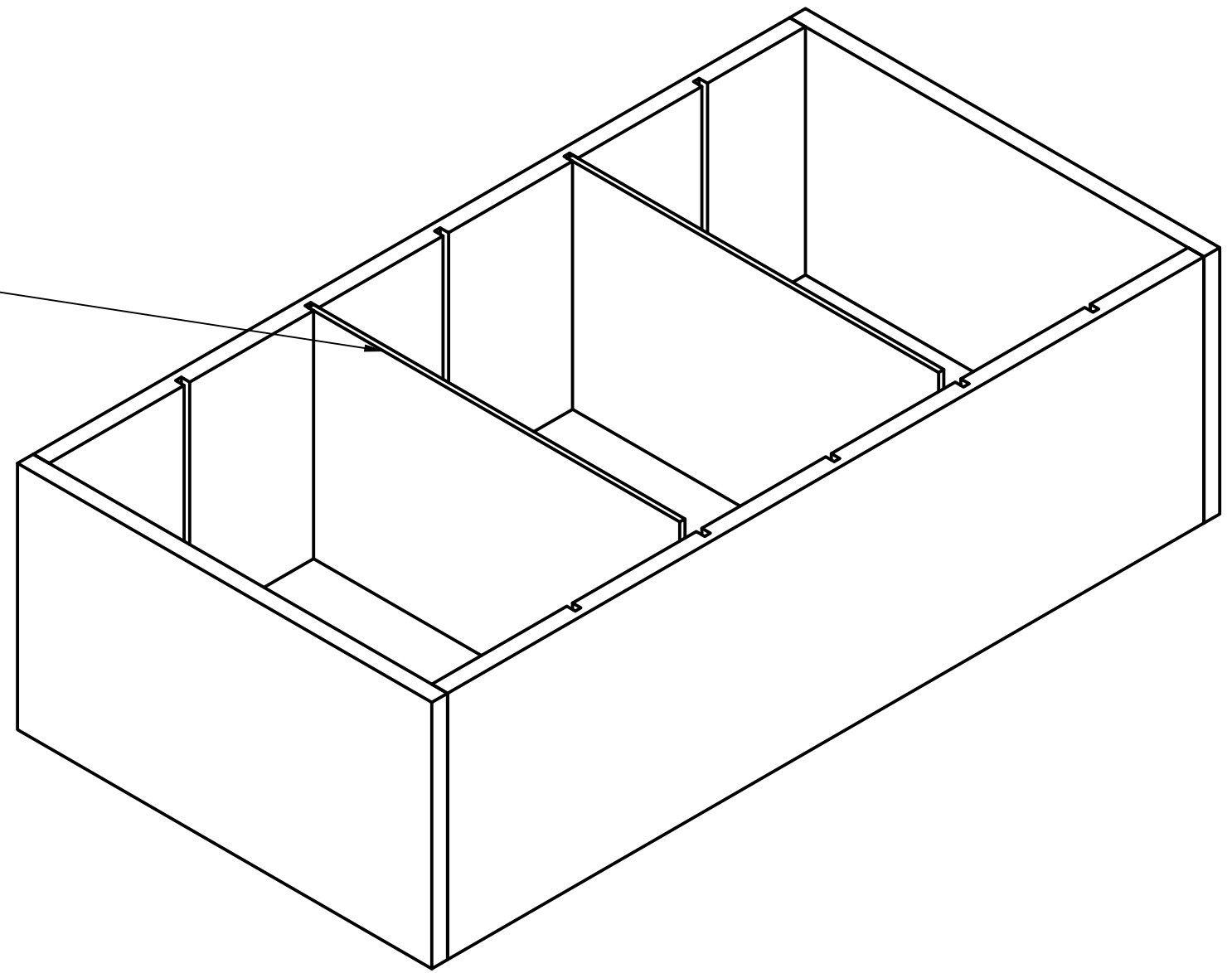
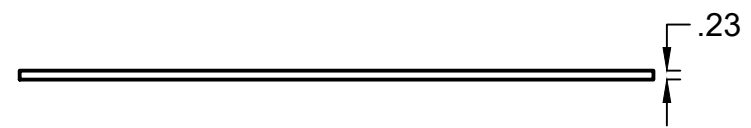
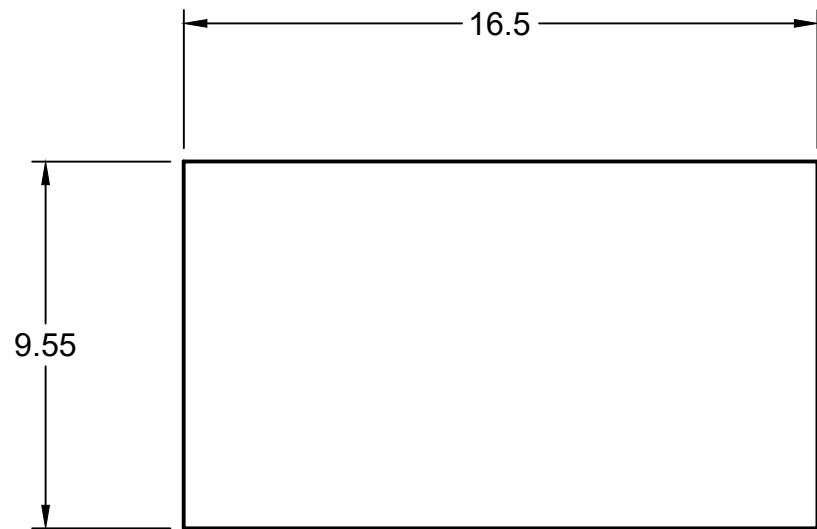
DRAWN	Wesley Harville 11/24/2021	SCALE 1:3	WEIGHT	SHEET 13/27
-------	----------------------------	-----------	--------	-------------


1. Our Finished Drawer size is based upon leaving $\frac{3}{4}$ " gaps on either side between the drawer and the passenger side panel and center divider because the slides we used require $\frac{3}{4}$ ". Please refer to the instructions with your hardware and adjust the width of your drawer accordingly.

2. Assemble the two sides to the drawer bottom, keeping the bottom and ends of the side flush with the bottom and ends of the bottom panel. Once the sides are attached, the add the front and rear drawer panels keeping all edges flush.

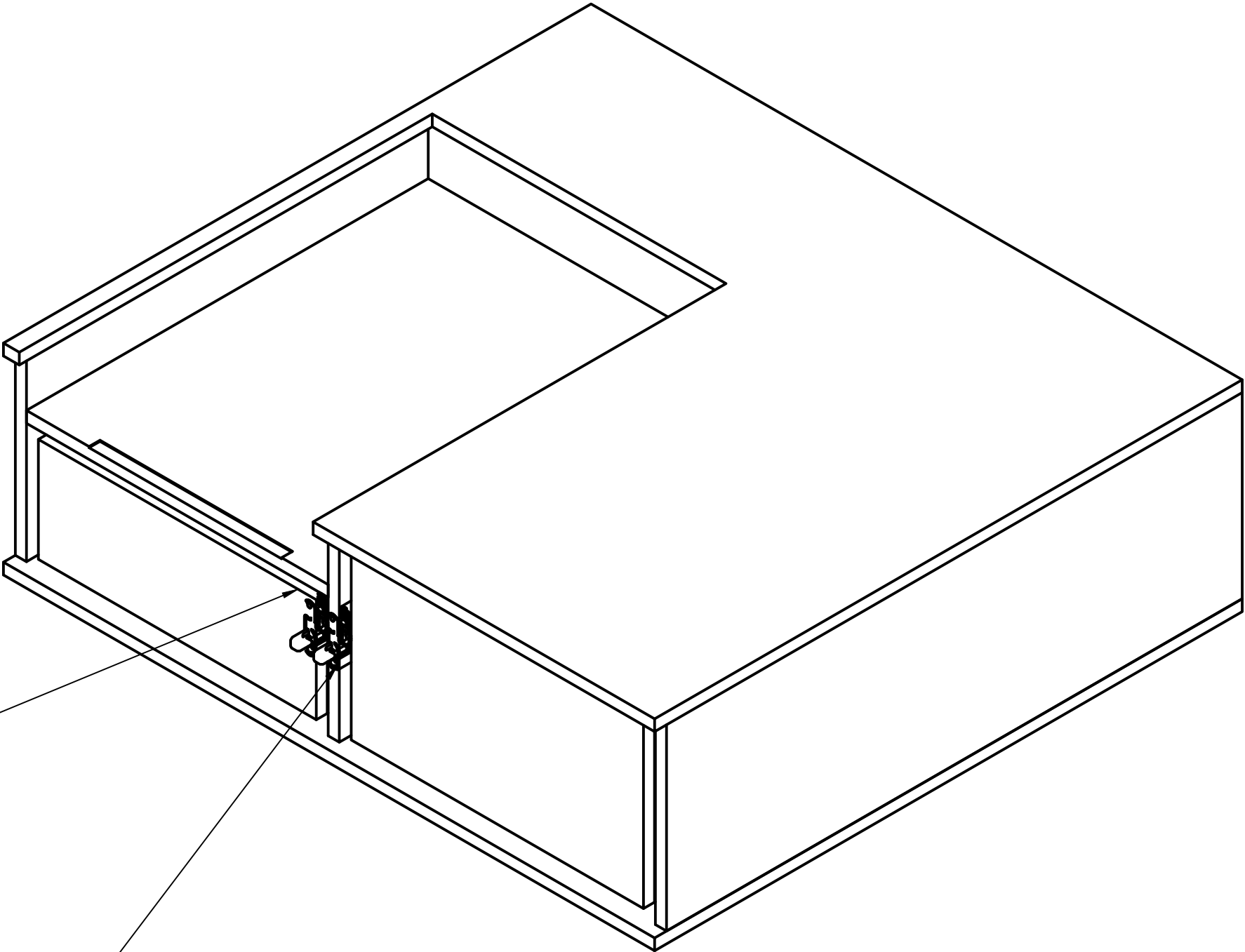


THE INFORMATION CONTAINED IN THIS DRAWING IS THE SOLE PROPERTY OF SHAWNEE HILLS WORKSHOP,LLC. ANY REPRODUCTION IN PART OR WHOLE WITHOUT WRITTEN PERMISSION IS PROHIBITED.	DIMENSIONS ARE IN INCHES		PROJECT 5th Gen 4Runner Drawer System		
			TITLE Passenger Drawer Assembly		
	SHAWNEE HILLS WORKSHOP		SIZE B	DWG NO	REV
DRAWN	Wesley Harville 11/24/2021		SCALE 1:10	WEIGHT	SHEET 14/27



THE INFORMATION CONTAINED IN THIS DRAWING IS THE SOLE PROPERTY OF SHAWNEE HILLS WORKSHOP,LLC. ANY REPRODUCTION IN PART OR WHOLE WITHOUT WRITTEN PERMISSION IS PROHIBITED.		DIMENSIONS ARE IN INCHES		PROJECT 5th Gen 4Runner Drawer System		
 SHAWNEE HILLS WORKSHOP		TITLE Driver Side Drawer Divider				
		SIZE B	DWG NO			REV
		DRAWN Wesley Harville 11/24/2021		SCALE 1:5	WEIGHT	SHEET 15/27

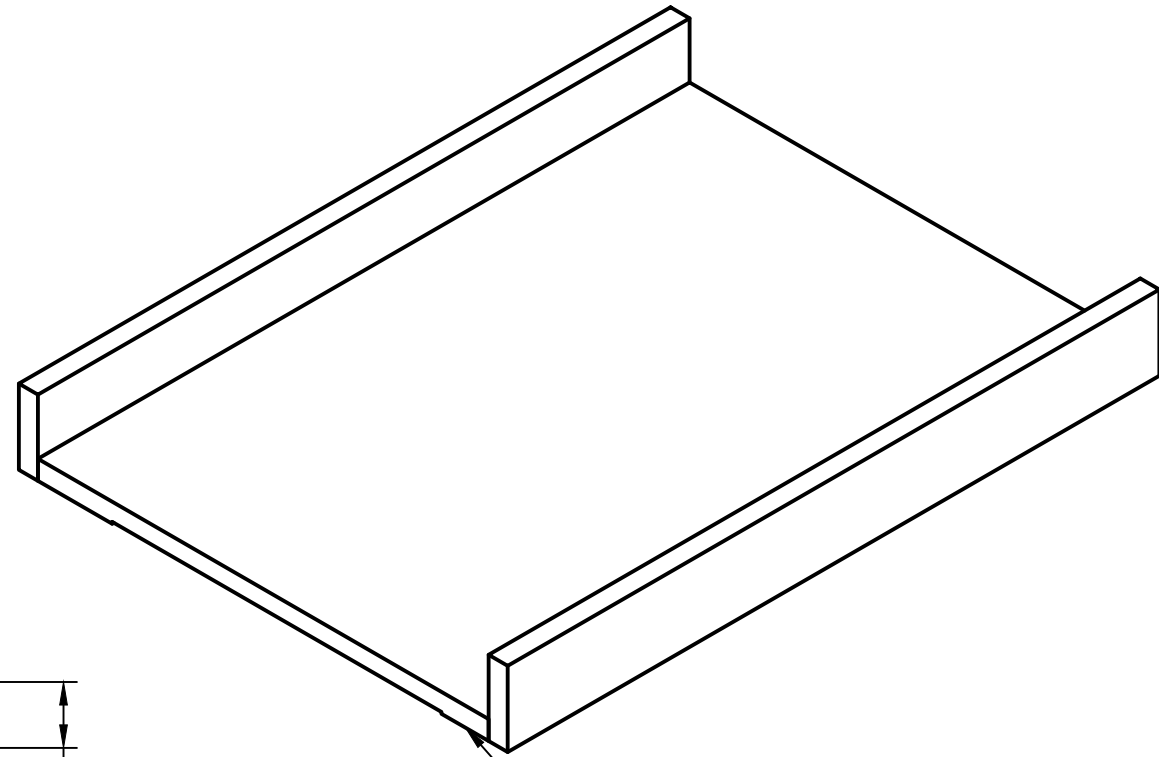
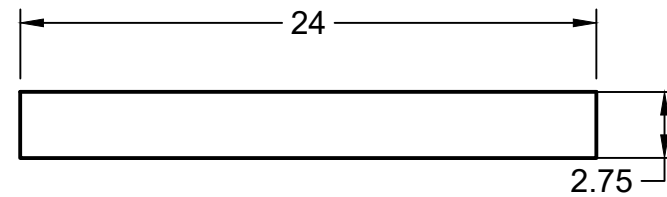
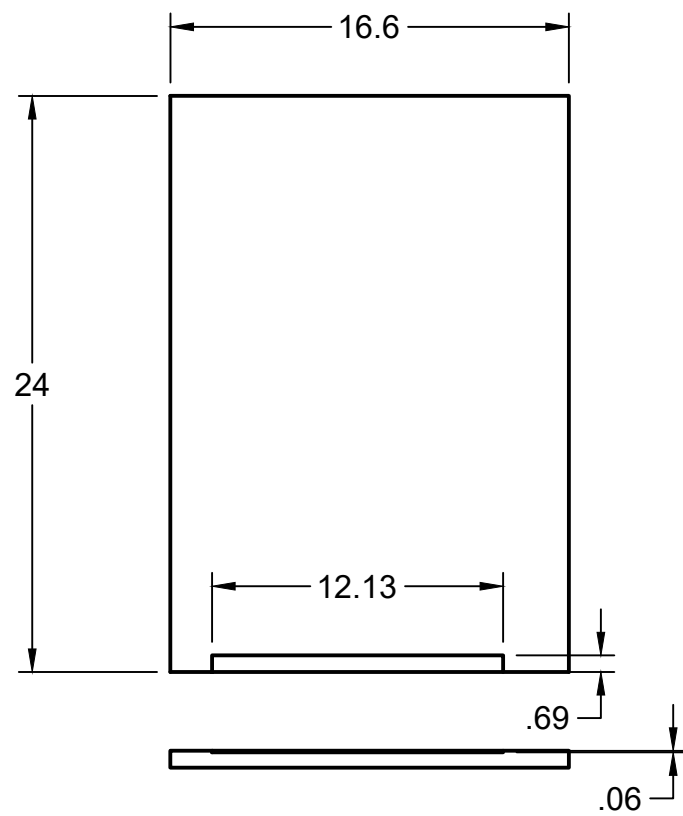
1. Install each of the drawers into the Drawer System making sure to follow the manufacturer's instructions of the full extension drawer slides you purchased.




Install the drawer slides for the driver side drawer up against the bottom of the Refrigerator Compartment Bottom Panel. These will act as runners for the "hidden" rear drawer.

Install the drawer slides for the passenger side drawer at the same height as the slides for the driver side drawer.

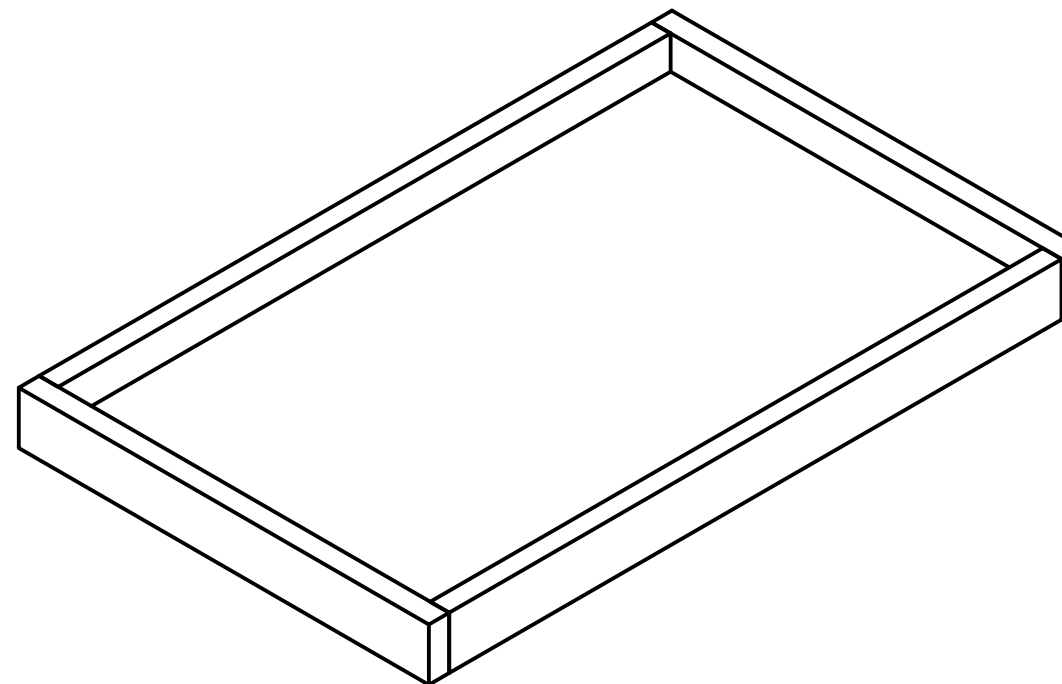
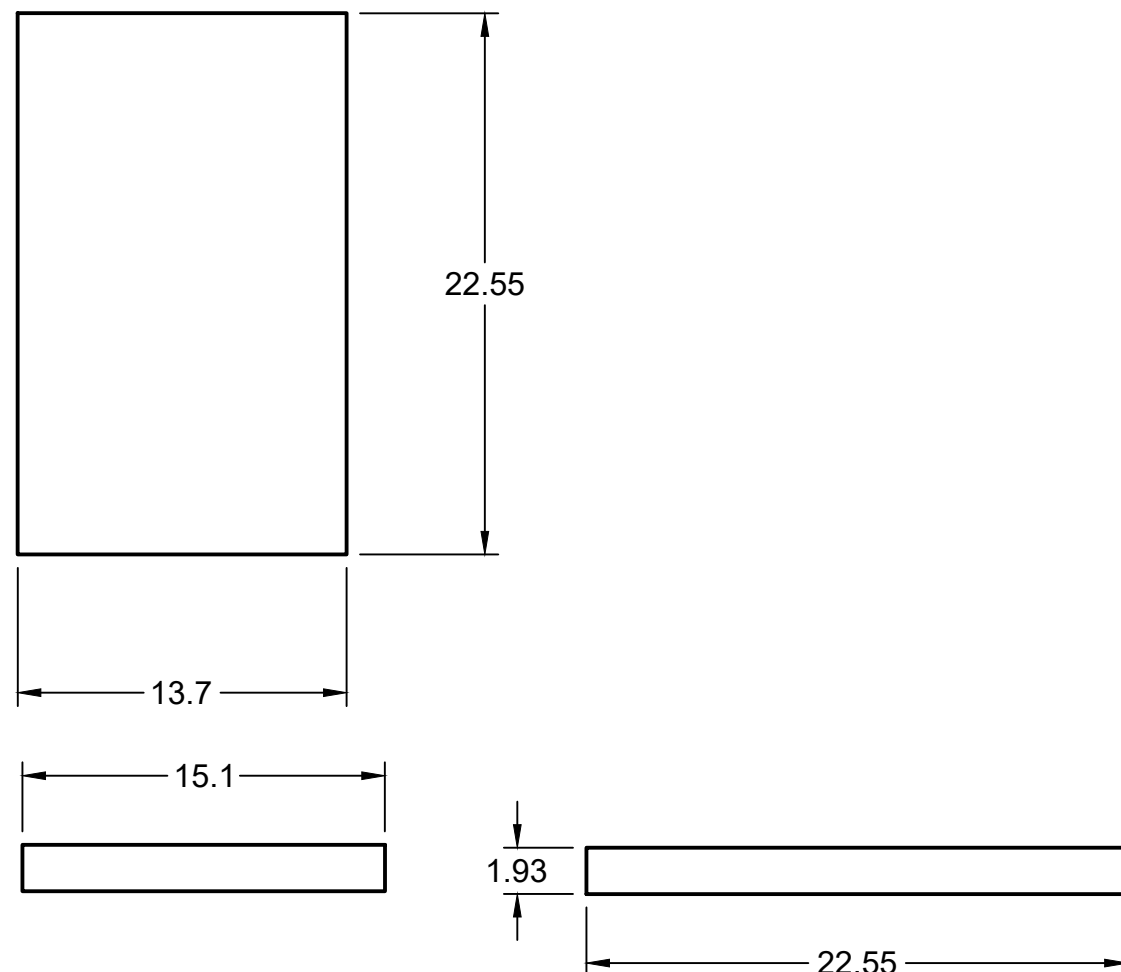
THE INFORMATION CONTAINED IN THIS DRAWING IS THE SOLE PROPERTY OF SHAWNEE HILLS WORKSHOP,LLC. ANY REPRODUCTION IN PART OR WHOLE WITHOUT WRITTEN PERMISSION IS PROHIBITED.	DIMENSIONS ARE IN INCHES		PROJECT 5th Gen 4Runner Drawer System		
			TITLE Driver Side Drawer Divider		
	SHAWNEE HILLS WORKSHOP		SIZE B	DWG NO	REV
DRAWN	Wesley Harville 11/24/2021		SCALE 1:8	WEIGHT	SHEET 16/27




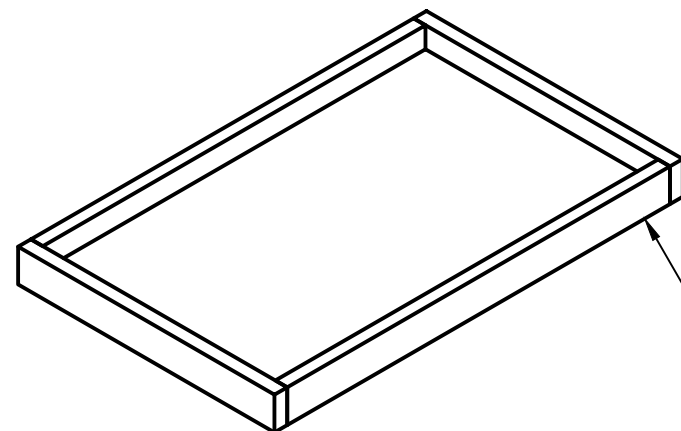
Attach Sides to bottom panel keeping the bottoms and sides flush

THE INFORMATION CONTAINED IN THIS DRAWING IS THE SOLE PROPERTY OF SHAWNEE HILLS WORKSHOP, LLC. ANY REPRODUCTION IN PART OR WHOLE WITHOUT WRITTEN PERMISSION IS PROHIBITED.		DIMENSIONS ARE IN INCHES		PROJECT 5th Gen 4Runner Drawer System		
				TITLE Refrigerator Slide Side & Bottom Sub Assembly		
 SHAWNEE HILLS WORKSHOP		SIZE B		DWG NO		REV
		DRAWN Wesley Harville 11/24/2021		SCALE 1:10		WEIGHT SHEET 17/27

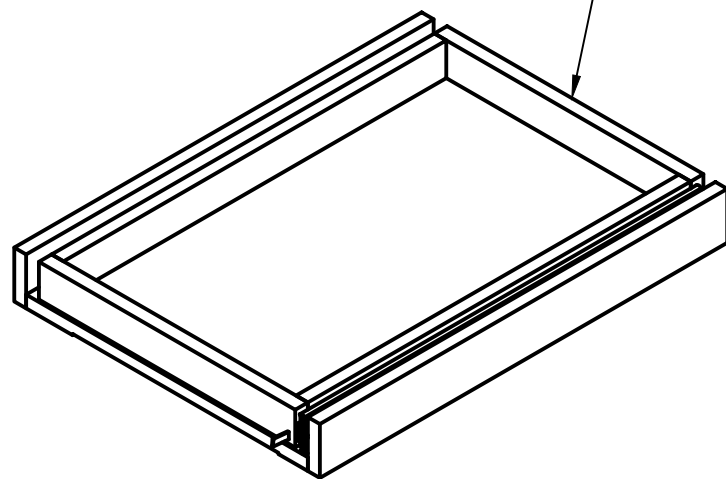
1. Our Finished tray size is based upon leaving $\frac{3}{4}$ " gaps on either side between the Refrigerator Tray and the sides of the Refrigerator Slide because the slides we used require $\frac{3}{4}$ ". Please refer to the instructions with your hardware and adjust the width of your drawer accordingly.



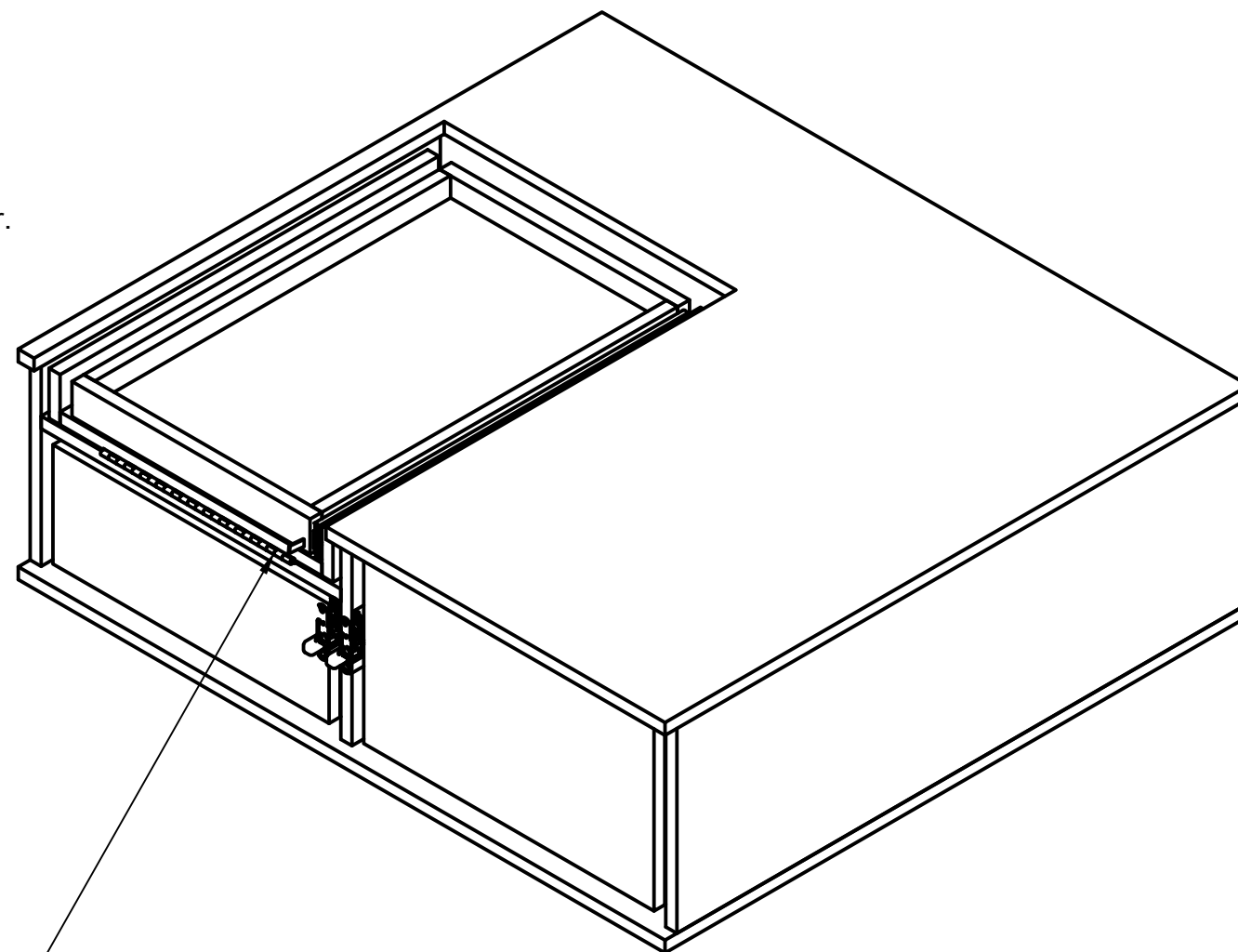
THE INFORMATION CONTAINED IN THIS DRAWING IS THE SOLE PROPERTY OF SHAWNEE HILLS WORKSHOP,LLC. ANY REPRODUCTION IN PART OR WHOLE WITHOUT WRITTEN PERMISSION IS PROHIBITED.	DIMENSIONS ARE IN INCHES	PROJECT 5th Gen 4Runner Drawer System			
		TITLE Refrigerator Tray Sub Assembly			
 SHAWNEE HILLS WORKSHOP		SIZE	DWG NO		REV
		B			
DRAWN	Wesley Harville 11/24/2021	SCALE 1:8		WEIGHT	SHEET 18/27



Install Refrigerator Tray Assembly into Refrigerator Slide Assembly following the instruction from the slide manufacturer.



Attach the finishes Refrigerator Slide to the top of the Refrigerator bottom panel using a 1.5"x12" Piano Hinge installed in the recess routed into the bottom of the Refrigerator Slide bottom and the top of the Refrigerator Compartment bottom panel



THE INFORMATION
CONTAINED IN THIS
DRAWING IS THE SOLE
PROPERTY OF
SHAWNEE HILLS
WORKSHOP, LLC. ANY
REPRODUCTION IN PART
OR WHOLE WITHOUT
WRITTEN PERMISSION IS
PROHIBITED.

**DIMENSIONS
ARE IN
INCHES**



**SHAWNEE HILLS
WORKSHOP**

PROJECT

5th Gen 4Runner Drawer System

TITLE

Sub Assembly #5

SIZE

B

DWG NO

REV

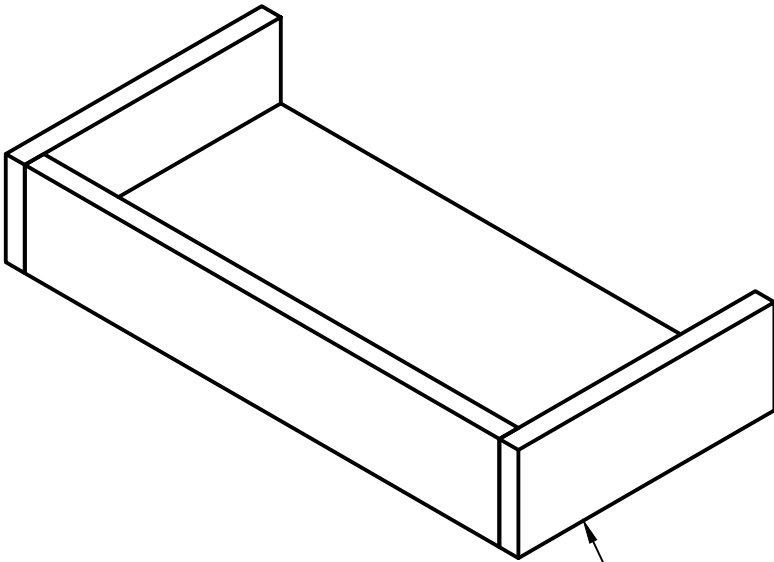
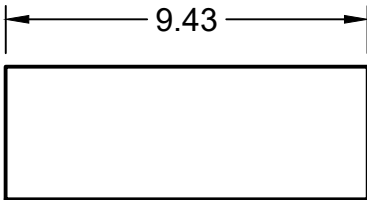
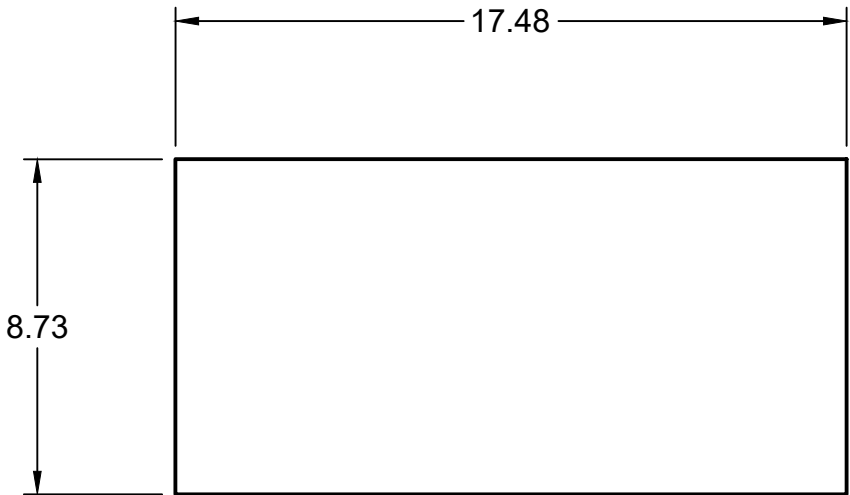
DRAWN

Wesley Harville 11/24/2021


SCALE 1:8

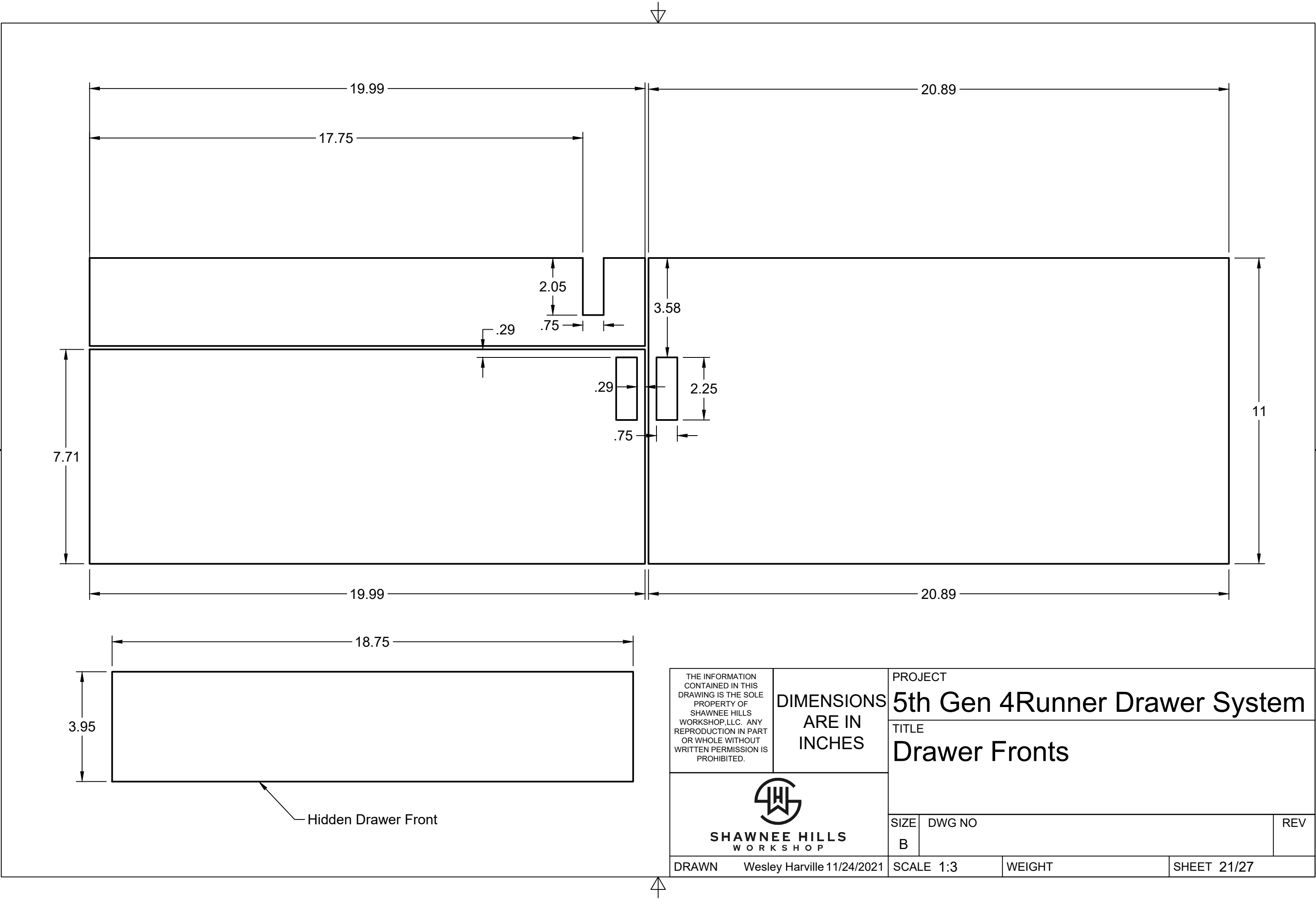
WEIGHT

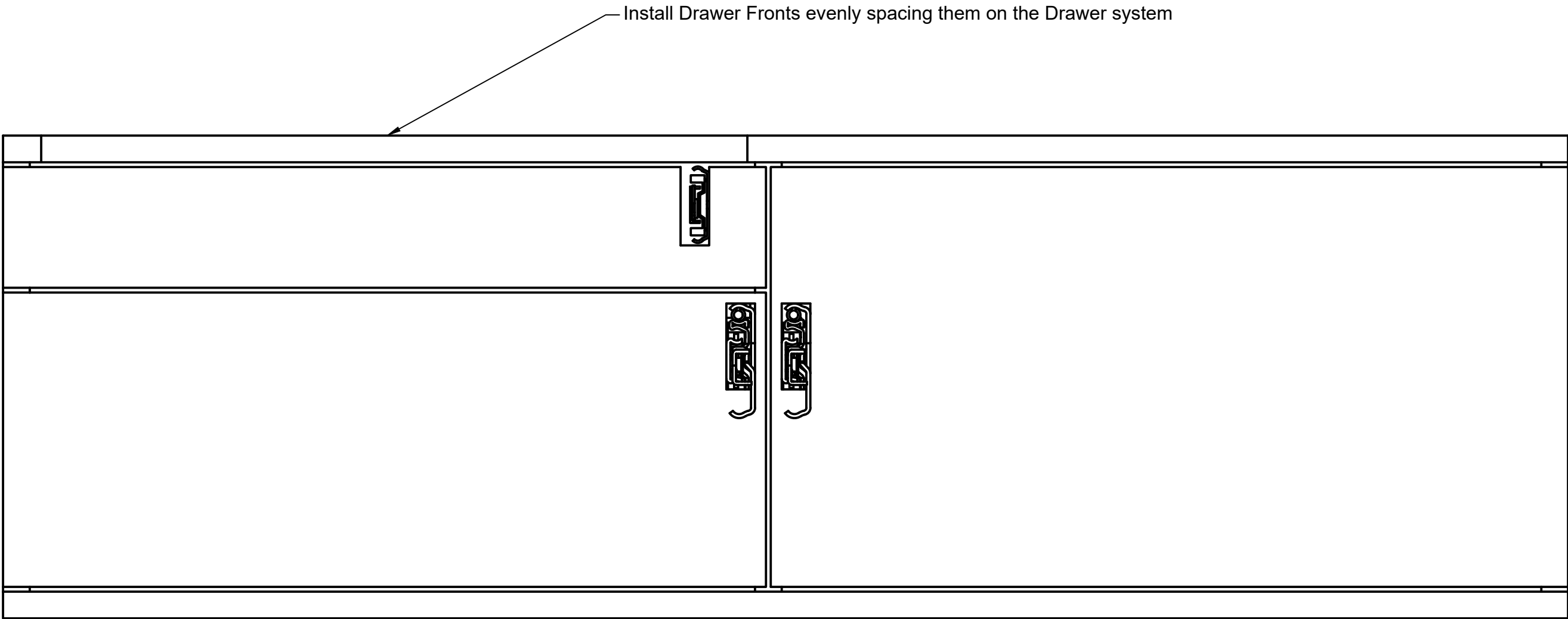
SHEET 19/27



Wrap the sides and the back of the Hidden Drawer Bottom making sure to keep the sides and bottom are flush

<div>THE INFORMATION CONTAINED IN THIS DRAWING IS THE SOLE PROPERTY OF SHAWNEE HILLS WORKSHOP,LLC. ANY REPRODUCTION IN PART OR WHOLE WITHOUT WRITTEN PERMISSION IS PROHIBITED.</div> <div><div>SHAWNEE HILLS WORKSHOP</div></div>	DIMENSIONS ARE IN INCHES	PROJECT 5th Gen 4Runner Drawer System		
		TITLE Hidden Drawer Assembly		
	SIZE B	DWG NO		REV
DRAWN	Wesley Harville 11/24/2021	SCALE 1:5	WEIGHT	SHEET 20/27





THE INFORMATION
CONTAINED IN THIS
DRAWING IS THE SOLE
PROPERTY OF
SHAWNEE HILLS
WORKSHOP,LLC. ANY
REPRODUCTION IN PART
OR WHOLE WITHOUT
WRITTEN PERMISSION IS
PROHIBITED.

DIMENSIONS
ARE IN
INCHES

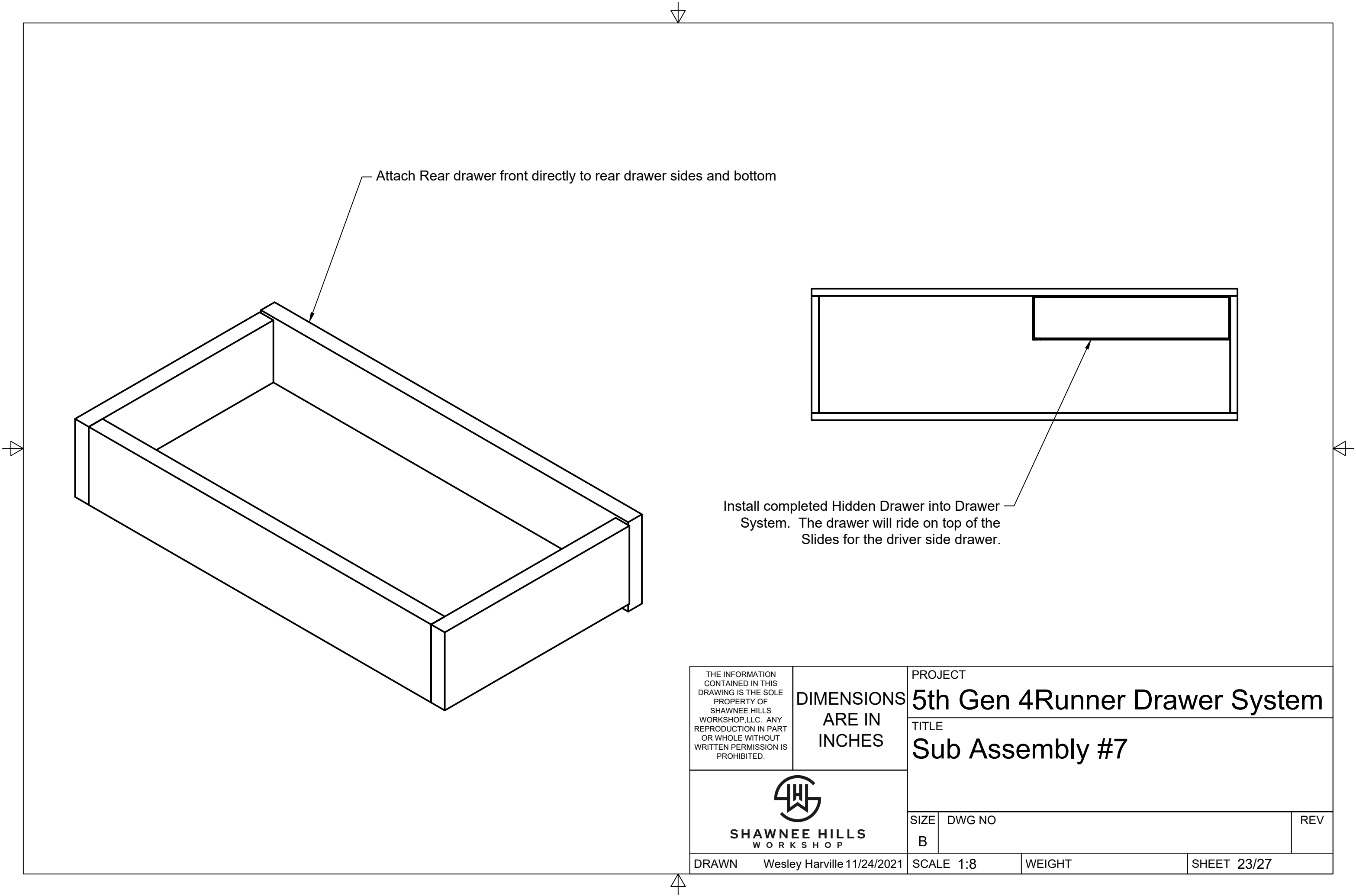


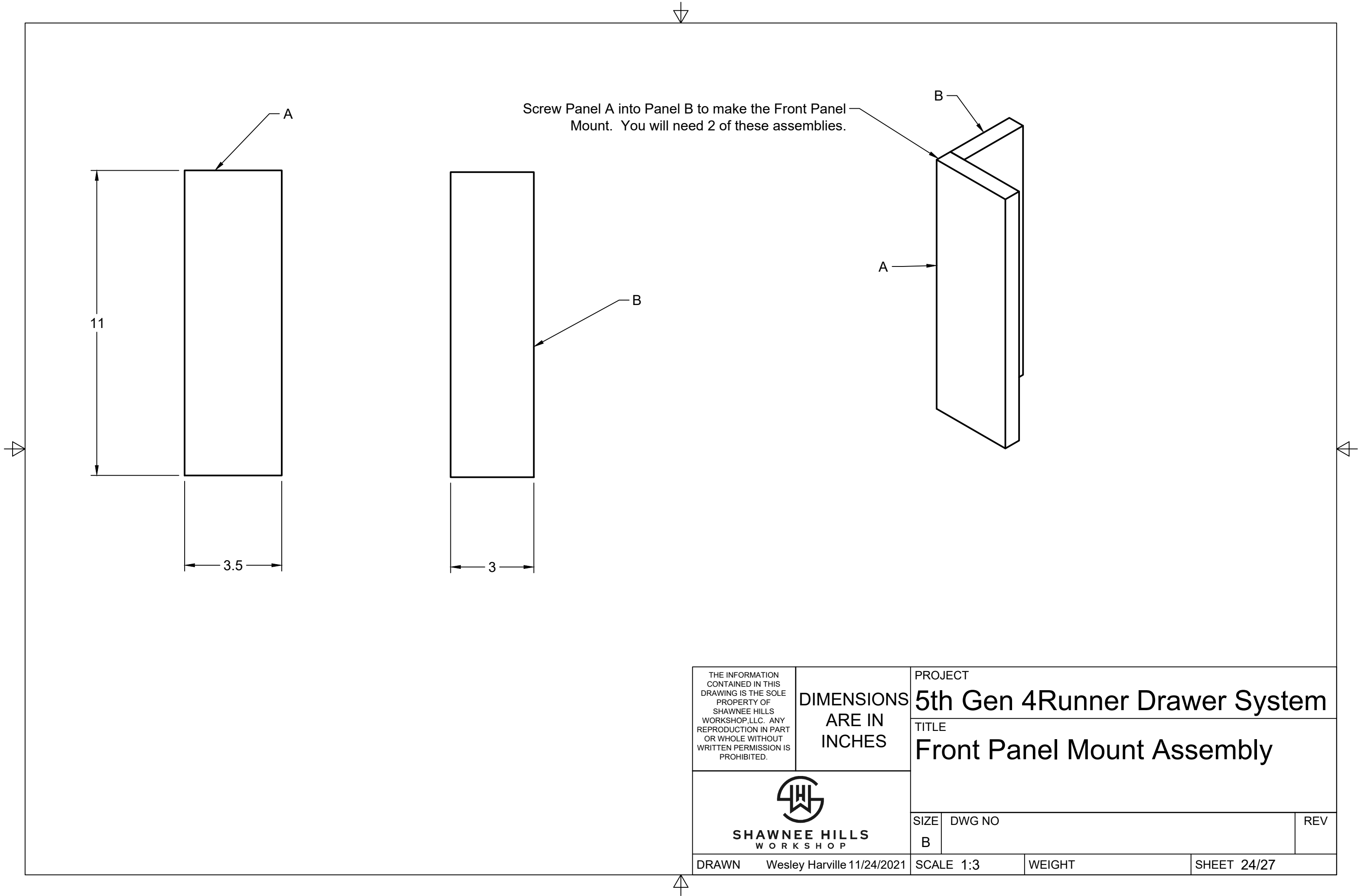
SHAWNEE HILLS
WORKSHOP

PROJECT
5th Gen 4Runner Drawer System

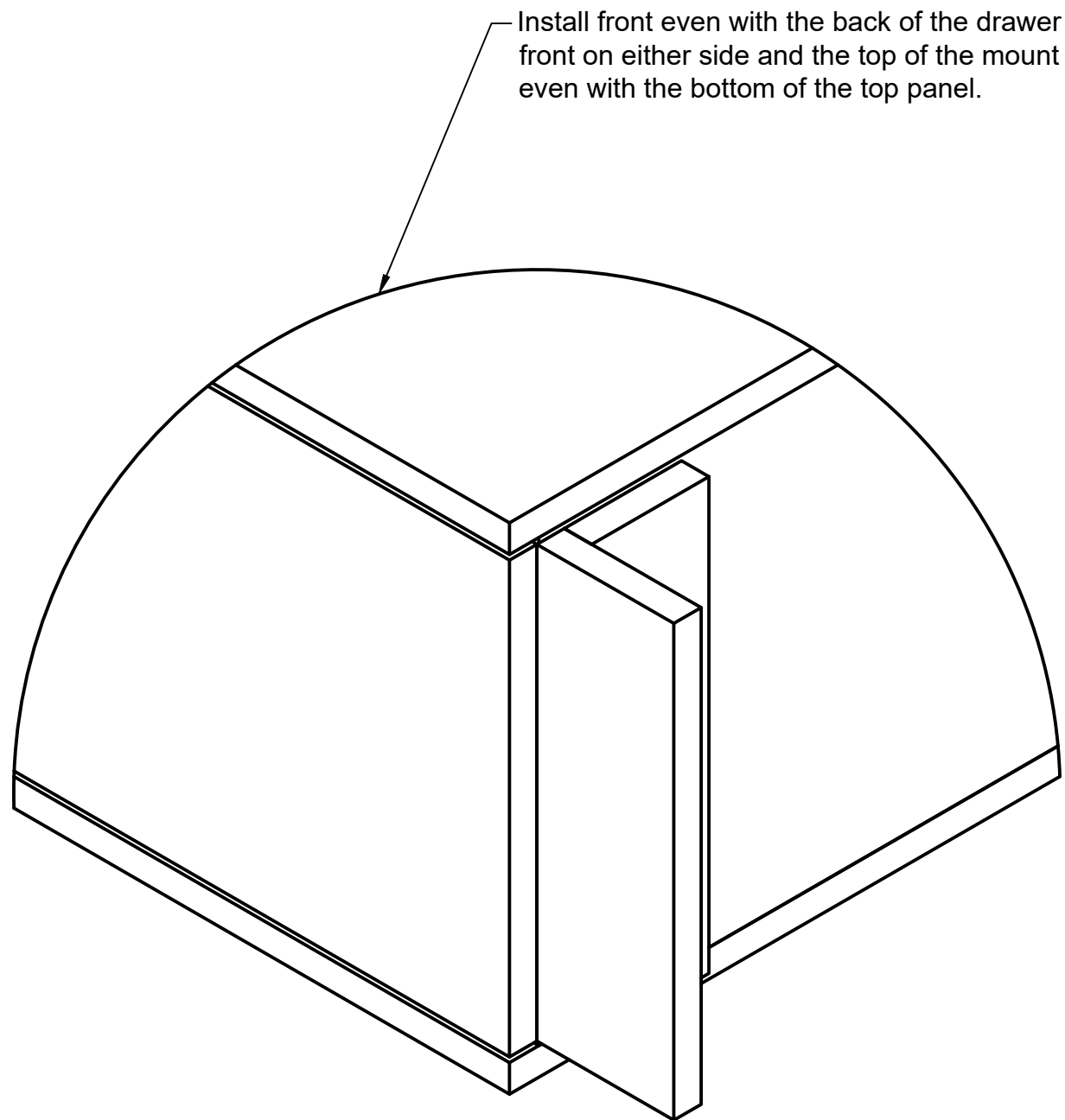
TITLE
Sub Assembly #6

SIZE	DWG NO	REV
B		

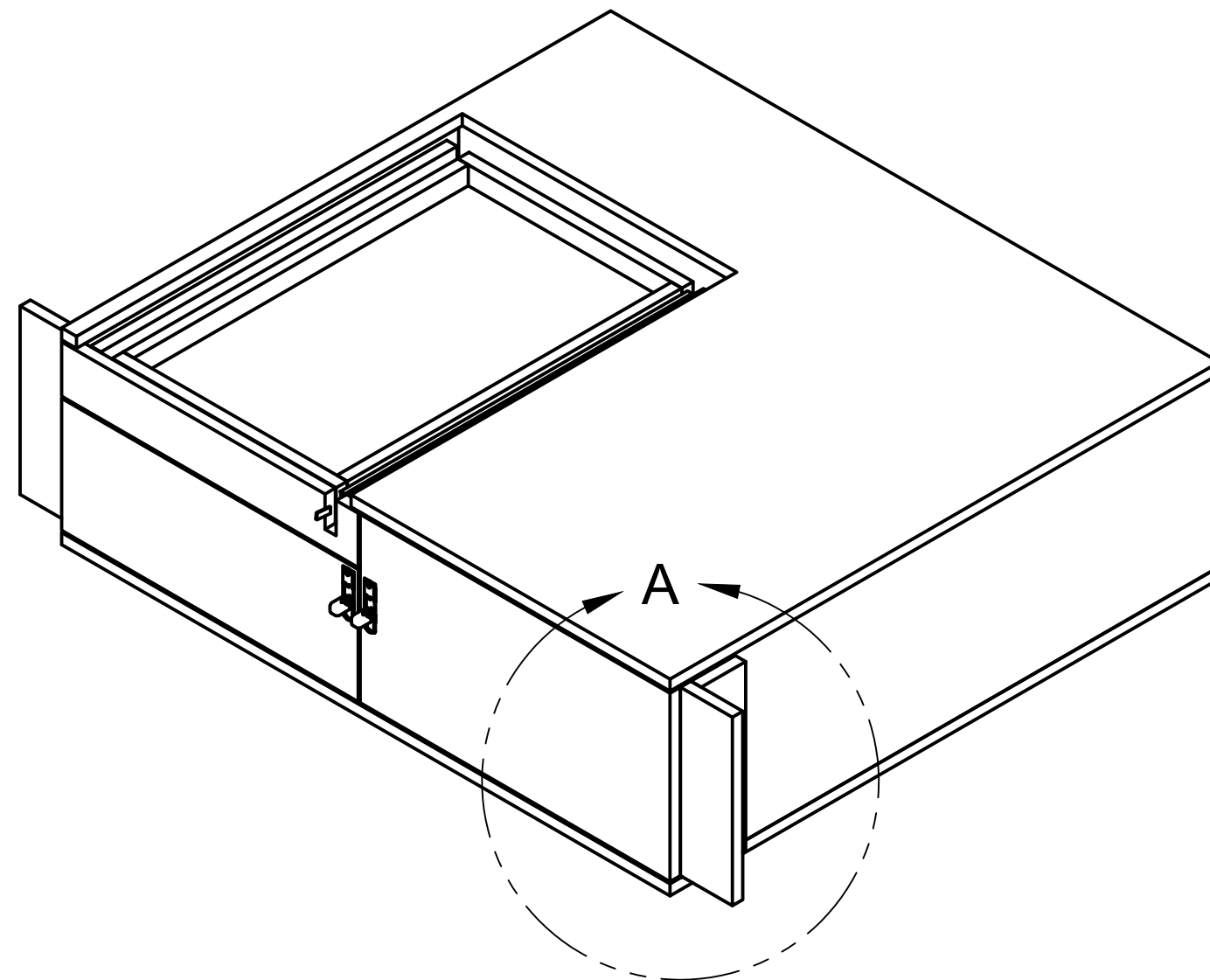





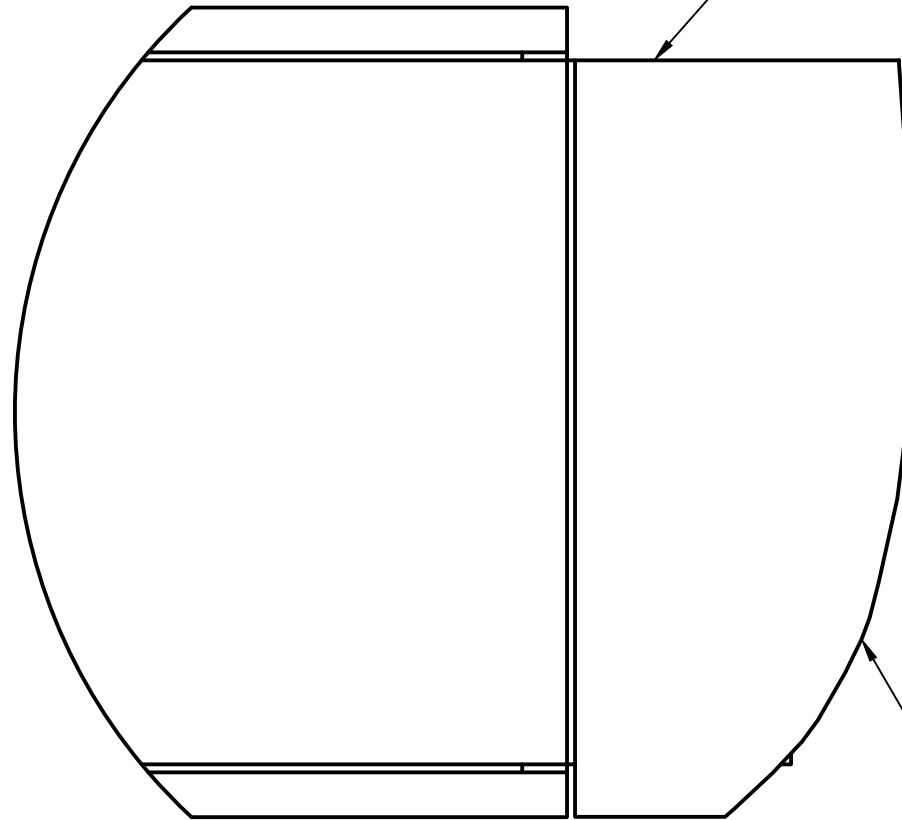
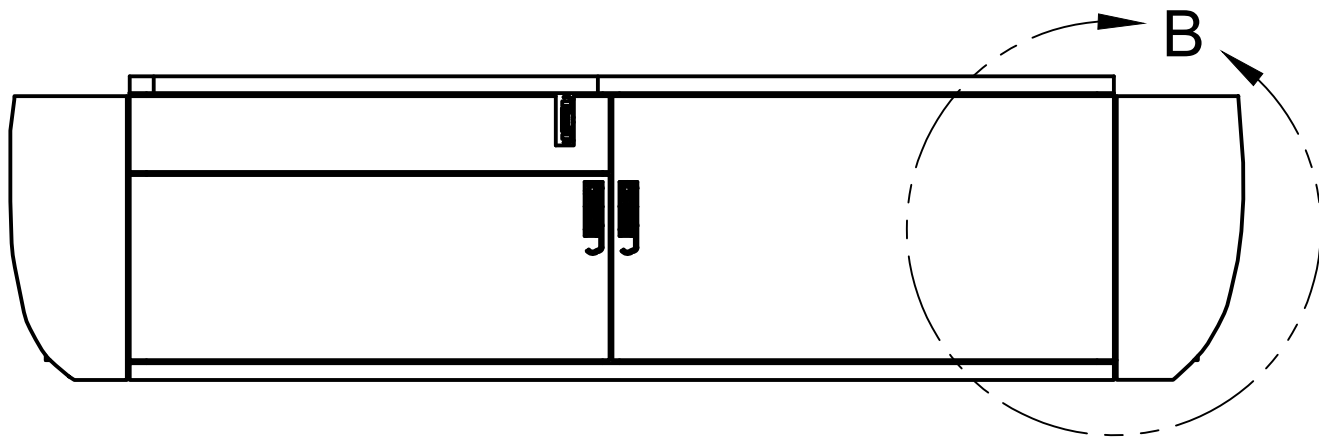
THE INFORMATION CONTAINED IN THIS DRAWING IS THE SOLE PROPERTY OF SHAWNEE HILLS WORKSHOP, LLC. ANY REPRODUCTION IN PART OR WHOLE WITHOUT WRITTEN PERMISSION IS PROHIBITED.	DIMENSIONS ARE IN INCHES		PROJECT 5th Gen 4Runner Drawer System		
			TITLE Front Panel Mount Assembly		
	SHAWNEE HILLS WORKSHOP		SIZE B	DWG NO	REV
DRAWN	Wesley Harville 11/24/2021		SCALE 1:3	WEIGHT	SHEET 24/27



DETAIL A



THE INFORMATION CONTAINED IN THIS DRAWING IS THE SOLE PROPERTY OF SHAWNEE HILLS WORKSHOP, LLC. ANY REPRODUCTION IN PART OR WHOLE WITHOUT WRITTEN PERMISSION IS PROHIBITED.		DIMENSIONS ARE IN INCHES		PROJECT 5th Gen 4Runner Drawer System		
				TITLE Front Panel Mount Assembly		
 SHAWNEE HILLS WORKSHOP		SIZE B		DWG NO		REV
		DRAWN Wesley Harville 11/24/2021		SCALE 1:8		WEIGHT SHEET 25/27

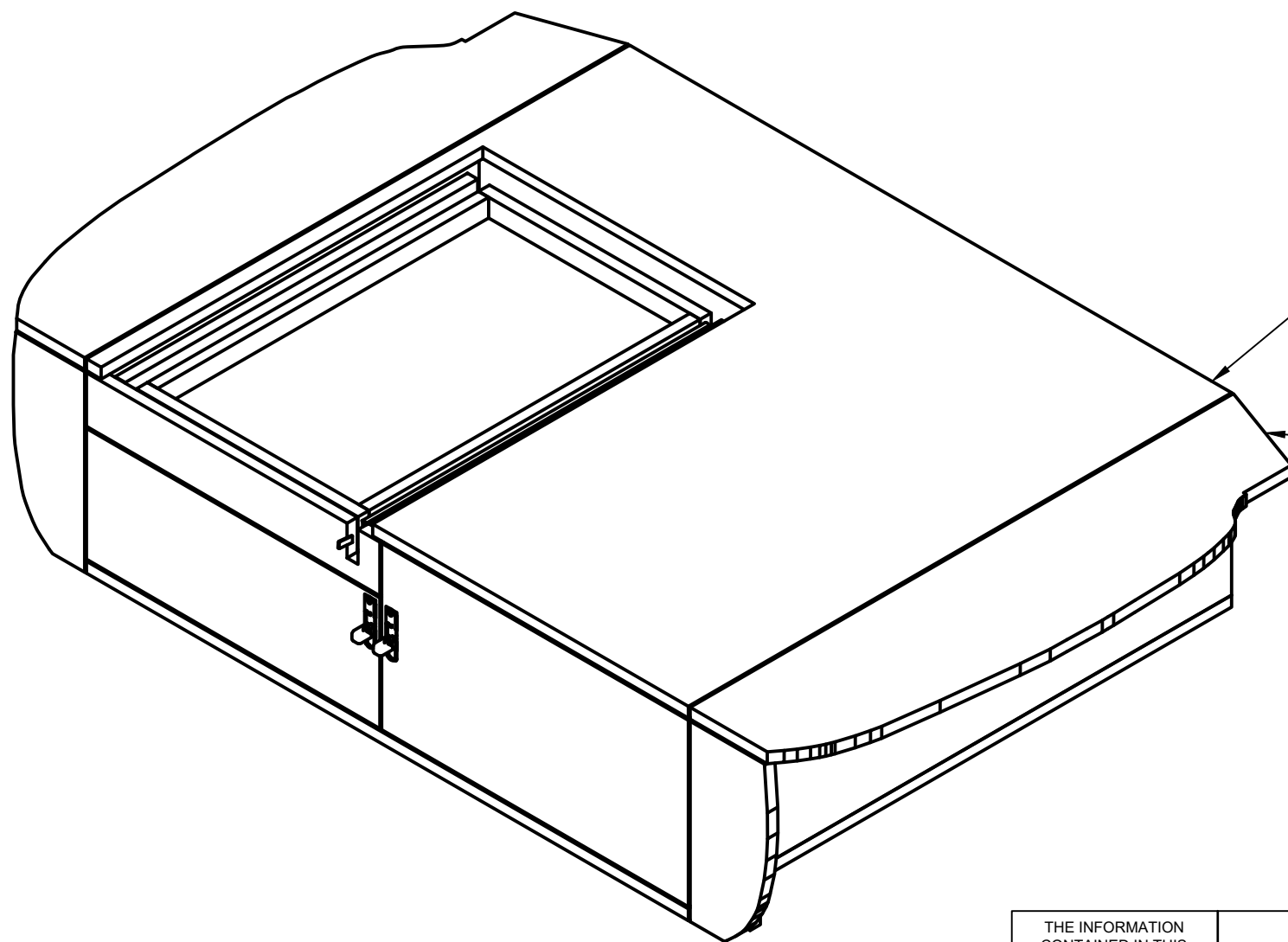


Install Front Panel with screws from the back through the front panel mount. The front panels will have to be removed to install the drawer system into your 4 Runner

See 1 to 1 Template for size and shape of front panels


DETAIL B
SCALE 1:3

THE INFORMATION CONTAINED IN THIS DRAWING IS THE SOLE PROPERTY OF SHAWNEE HILLS WORKSHOP,LLC. ANY REPRODUCTION IN PART OR WHOLE WITHOUT WRITTEN PERMISSION IS PROHIBITED.		DIMENSIONS ARE IN INCHES		PROJECT 5th Gen 4Runner Drawer System		
				TITLE Sub Assembly #9		
		SHAWNEE HILLS WORKSHOP		SIZE B	DWG NO	REV
DRAWN Wesley Harville 11/24/2021		SCALE 1:8		WEIGHT		SHEET 26/27



Install the left and right wing using 2 inset hinges for frameless cabinets. Preferably with 100 degrees or more of travel.

See Attached 1 to 1 template for size and shape of wing

THE INFORMATION CONTAINED IN THIS DRAWING IS THE SOLE PROPERTY OF SHAWNEE HILLS WORKSHOP,LLC. ANY REPRODUCTION IN PART OR WHOLE WITHOUT WRITTEN PERMISSION IS PROHIBITED.		DIMENSIONS ARE IN INCHES		PROJECT 5th Gen 4Runner Drawer System		
				TITLE Final Assembly		
 SHAWNEE HILLS WORKSHOP		SIZE B		DWG NO		REV
		DRAWN Wesley Harville 11/24/2021		SCALE 1:8		WEIGHT
				SHEET 27/27		