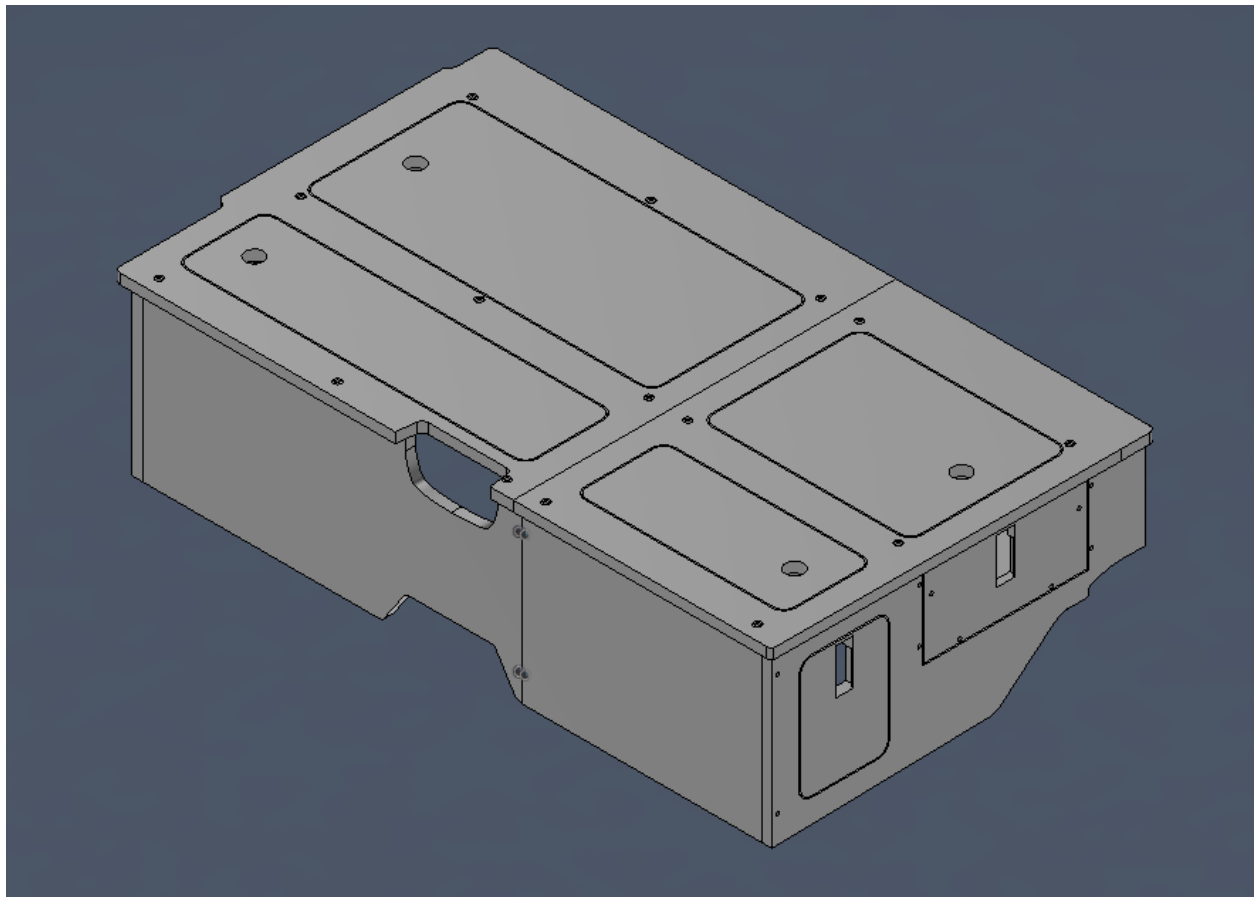
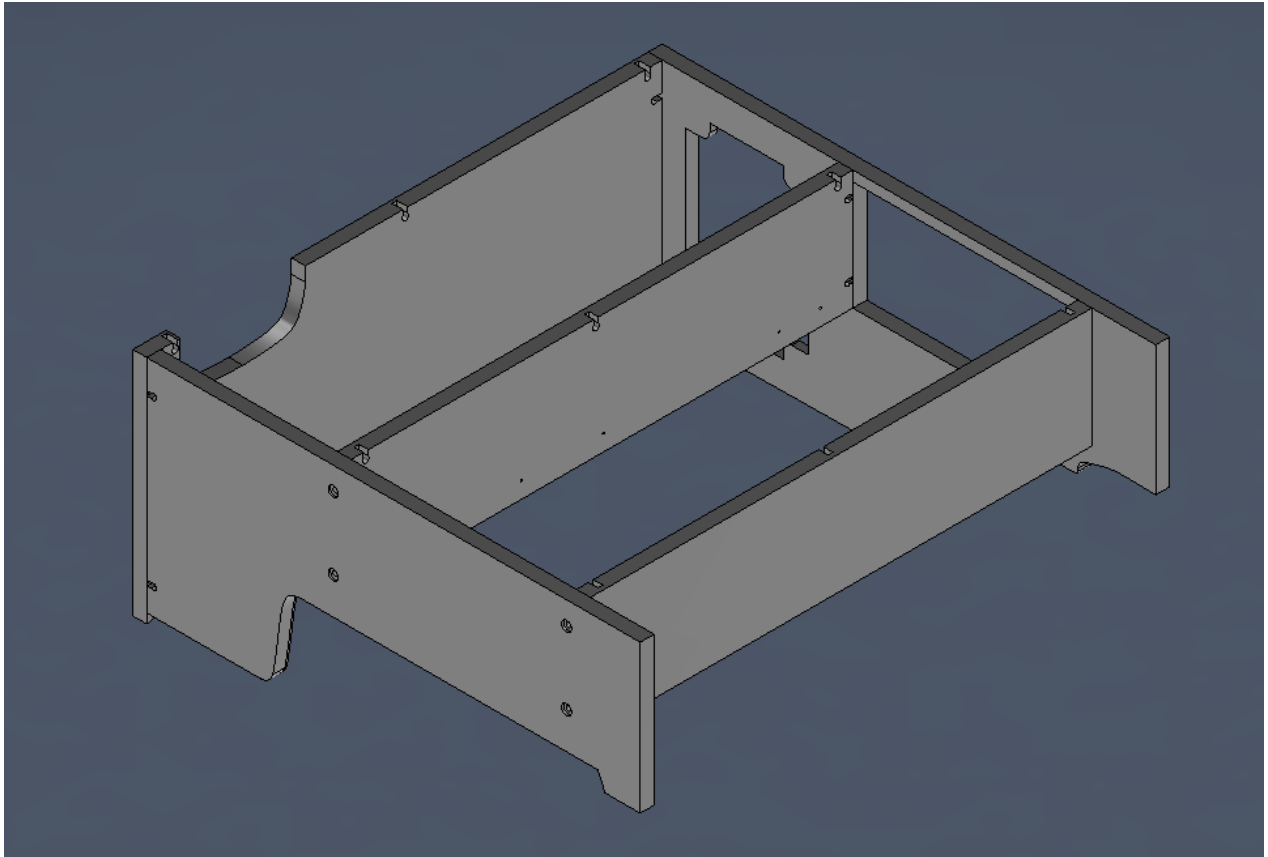


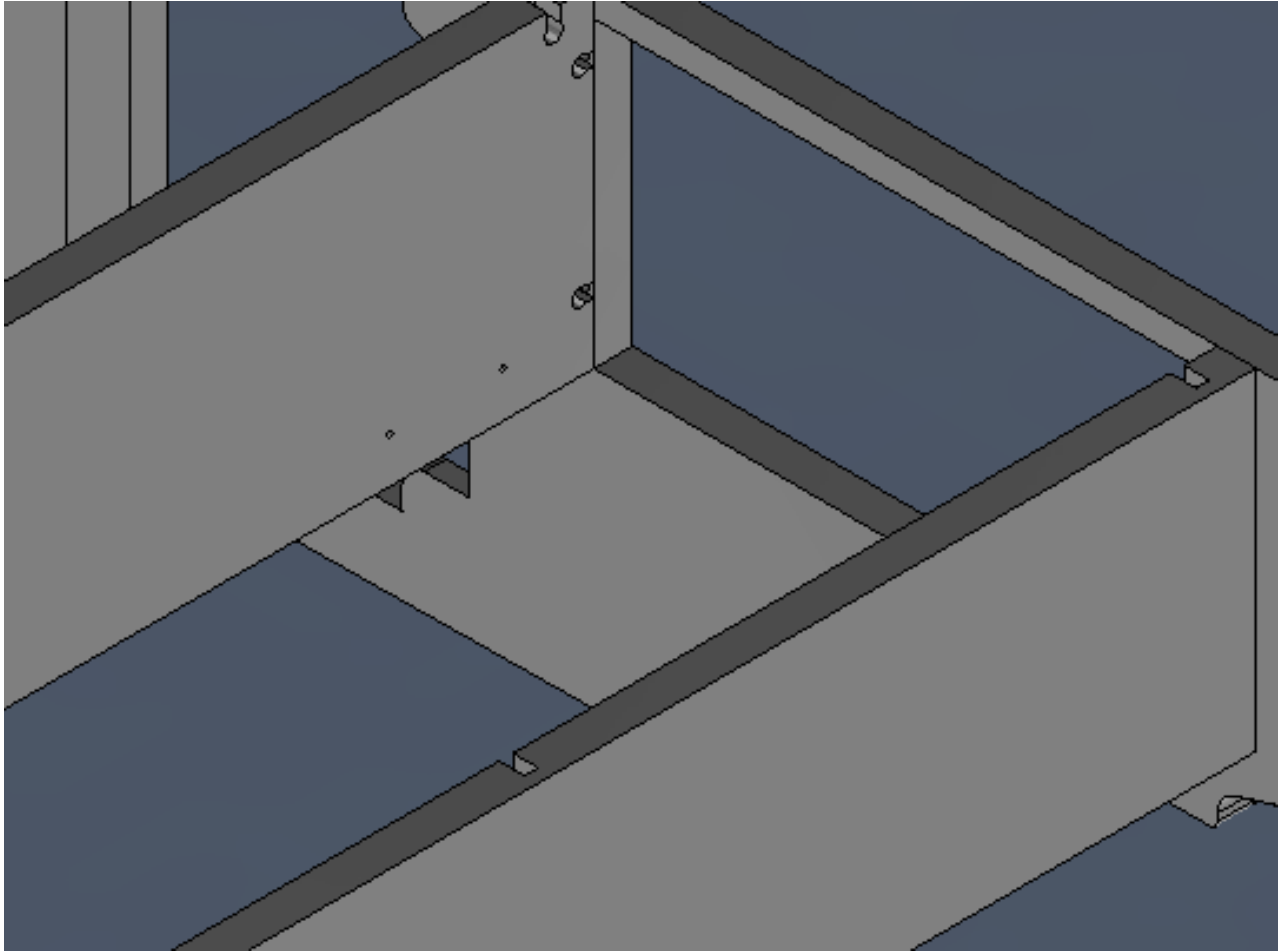
SHW OFFROAD

Toyota Tacoma Seat Replacement System Install Tall Height

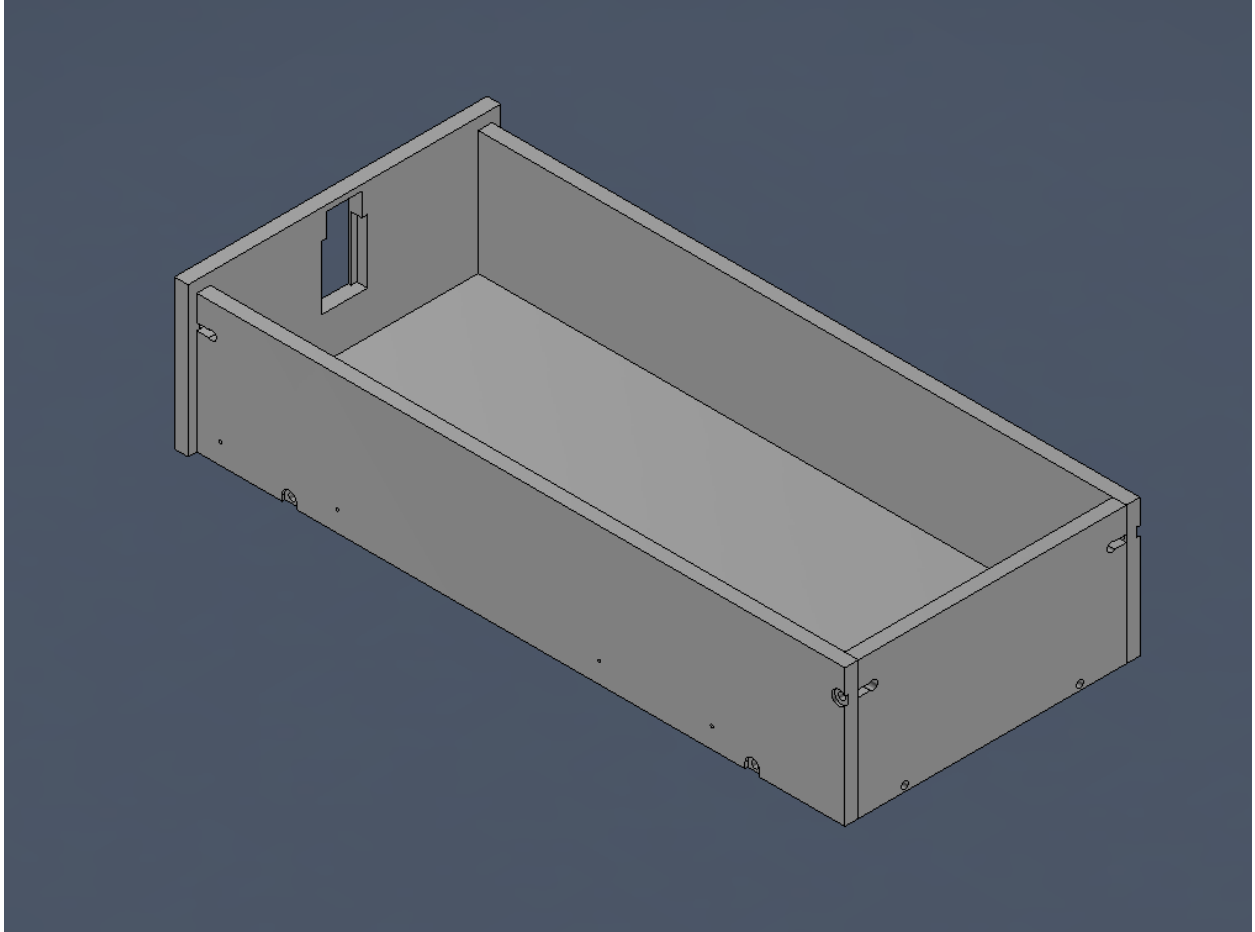


1. Remove the seats in the Truck. Be sure to save all OEM bolts. Remove the factory storage bin lids.
2. Remove all the seat delete pieces and sort them into piles.
3. Assemble 60% seat delete using a 5/16 Allen key.
 - a. Assemble the base per the figure below. Install a threaded dowel into each hole with the screw driver alignment slot facing out. Start all fasteners, but leave them loose for adjustment. Note the orientation of the keyholes to aid in assembly. For the two drawer supports, they must be installed so that the 2 pilot holes that are close together are facing toward the drawer opening (see both pictures below)





- b. Assemble the 60 % Drawer per the figure below. Just as before insert the threaded dowels into each hole with the screw driver alignment slot facing out. Start all fasteners, but leave them loose for adjustment. Note the orientation of the keyholes to aid in assembly. Like before make sure that the two holes that are close together on the drawer sides face the drawer front. Also, the bottom panel must be placed with the keyholes facing down. Lastly, the drawer face has a recess on one side. That recess must face the interior of the cabinet

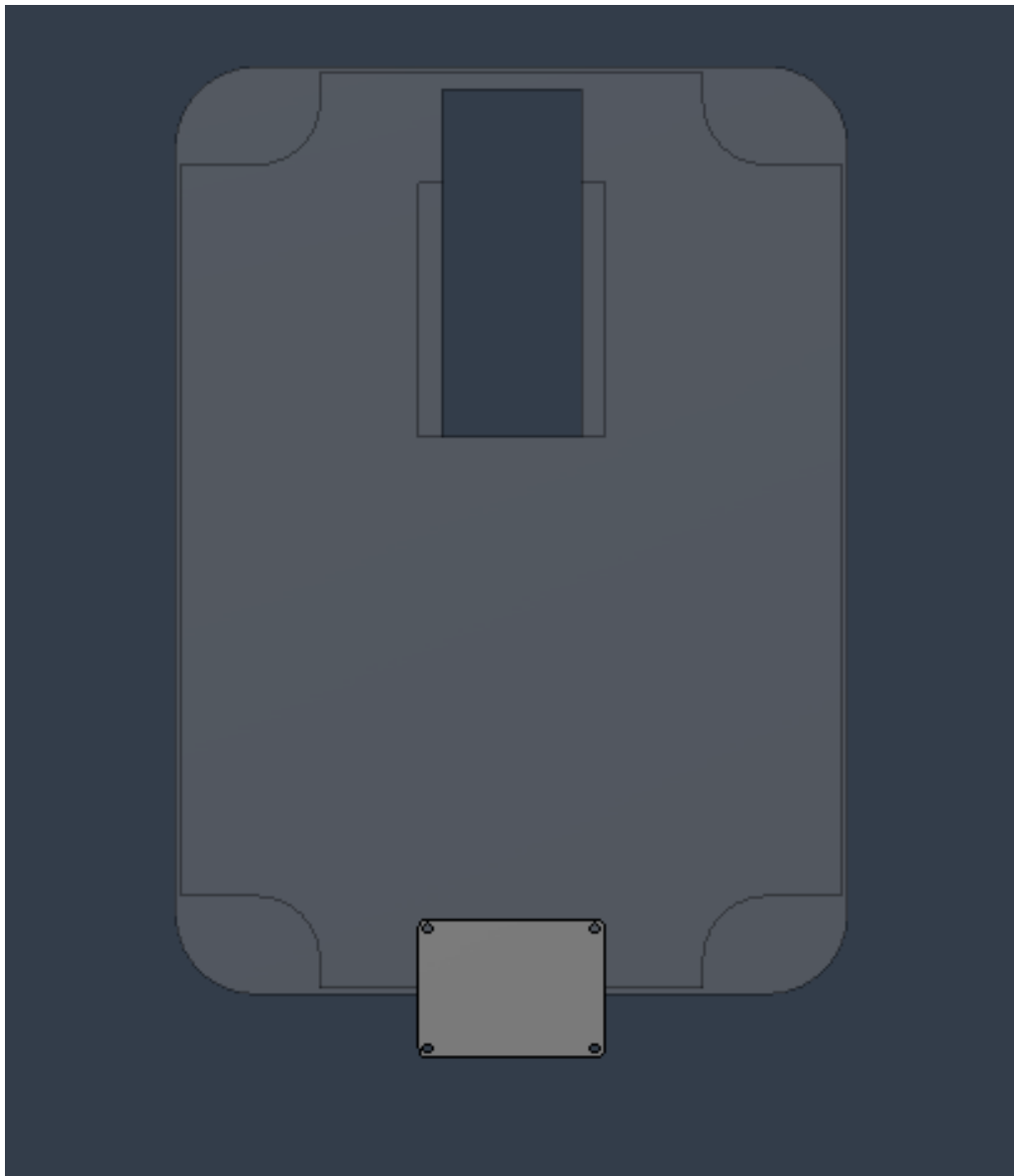


- c. Install the drawer slides on the 60% base and drawer. Open up the pack of drawer slides. One at a time, extend the drawer slide fully and where the two halves of the drawer slide meet, there is a plastic tab. Push this tab down and you can separate the slide. The larger half goes on the cabinet while the smaller half goes on the drawer. Using the $\frac{1}{2}$ " screws we provided (NOT THE ONES THAT COME WITH THE SLIDES) screw the drawer slide into the drawer using the pre drilled holes as reference. Using the $\frac{3}{4}$ " screws we provided (NOT THE ONES THAT COME WITH THE SLIDES) screw the drawer slide into the cabinet using the pre drilled holes as reference.

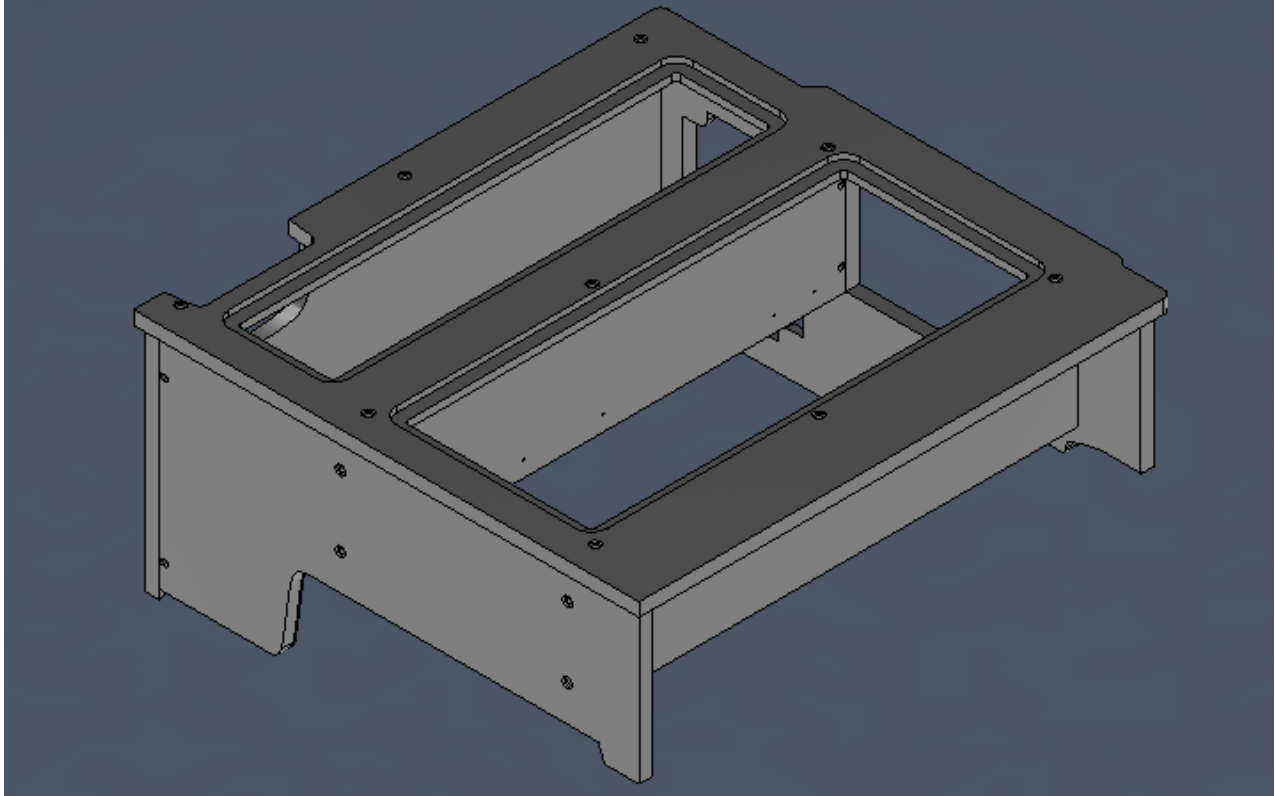


- d. When inserting the drawer into the cabinet, make sure the bearing pack is pulled to the front of the drawer opening. Be careful when inserting the drawer to make sure the drawer slides are set inside of the bearing pack. We cannot warranty damaged bearing packs due to miss installation. When you install your drawer for the first time you will feel a slight resistance when pushing it in. Once it is fully engaged, it should then slide smoothly. If you feel consistent resistance, you may need to tap your drawer supports on the cabinet apart slightly to make a larger space for the drawer.

- e. Install the latch on the drawer. If your drawer has a bolt in the latch, take it out as you will not be using that. Remove the u Clamp off the back of the latch. Your latch should now slide into the hole. Once it is in the hole, put the U clamp back on and tighten the bolt to reinstall it.
- f. Install the latch on the cubbie door the same way you did above. On the bottom of the inside of the cubbie door you will need to install your mending plate. Use the $\frac{3}{4}$ " screws we provided using the pre drilled holes as reference.

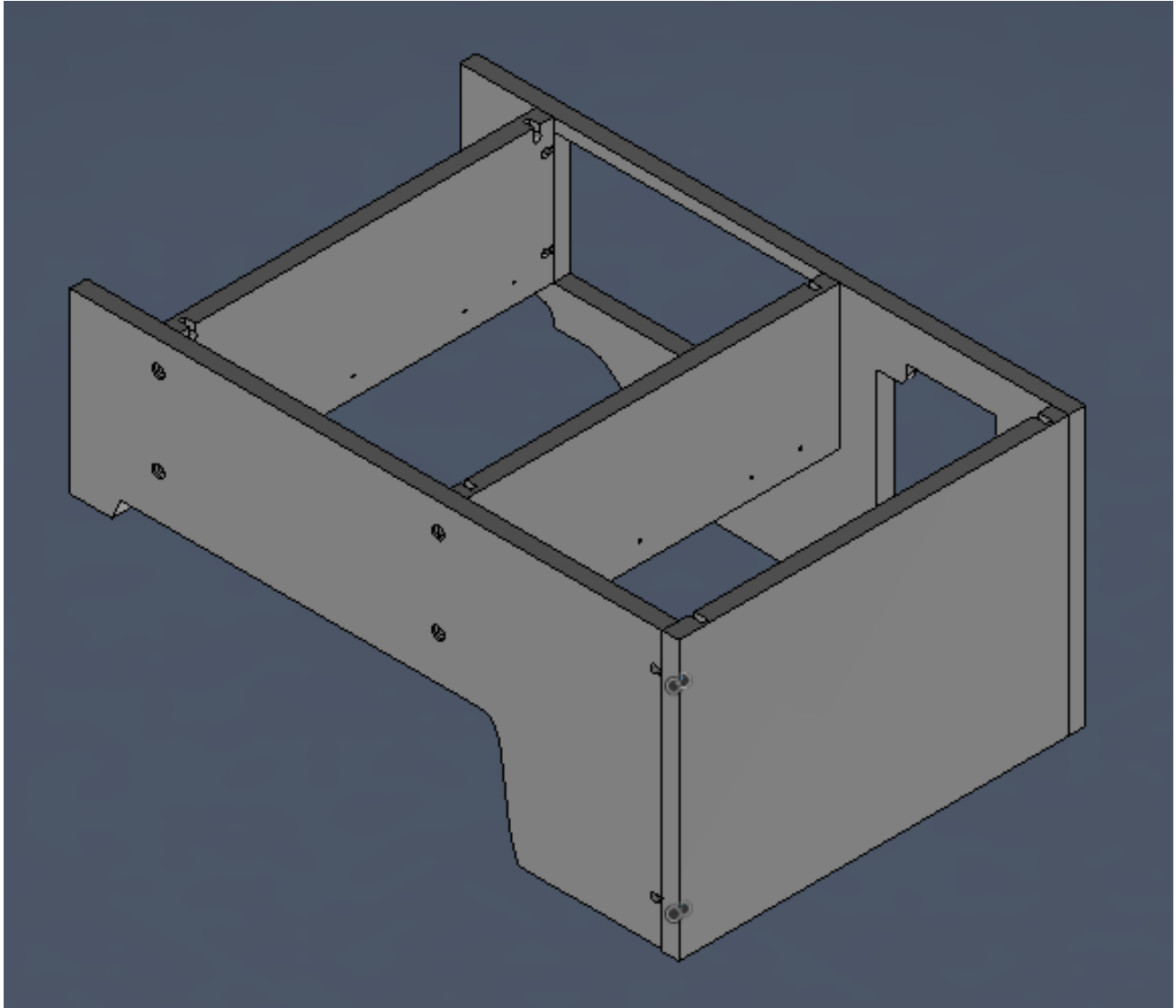


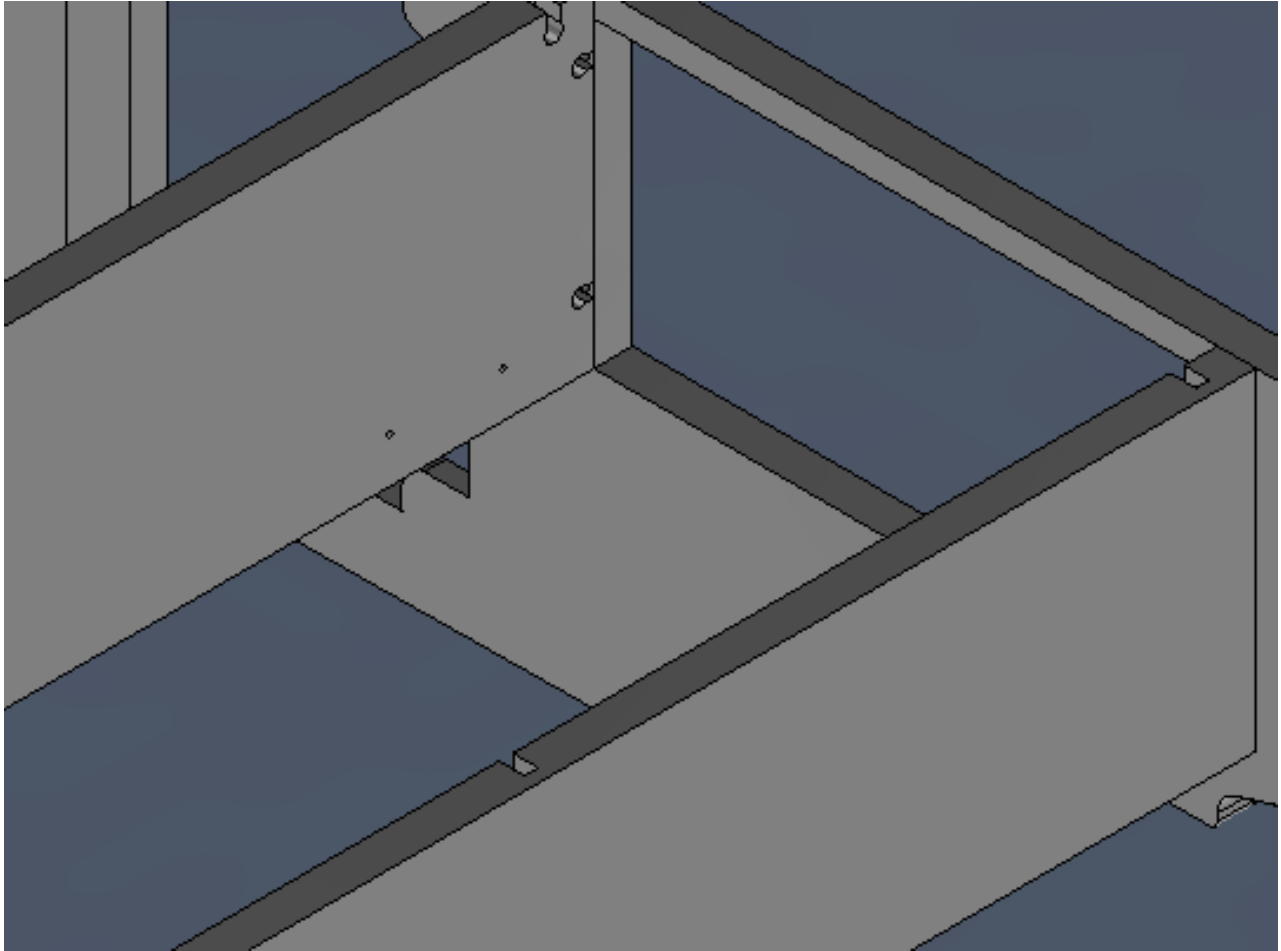
- g. Install the 60% Delete top. Once in place and alignment is achieved, tighten all bolts down to a nice hand tight snug fit. DO NOT OVERTIGHTEN.



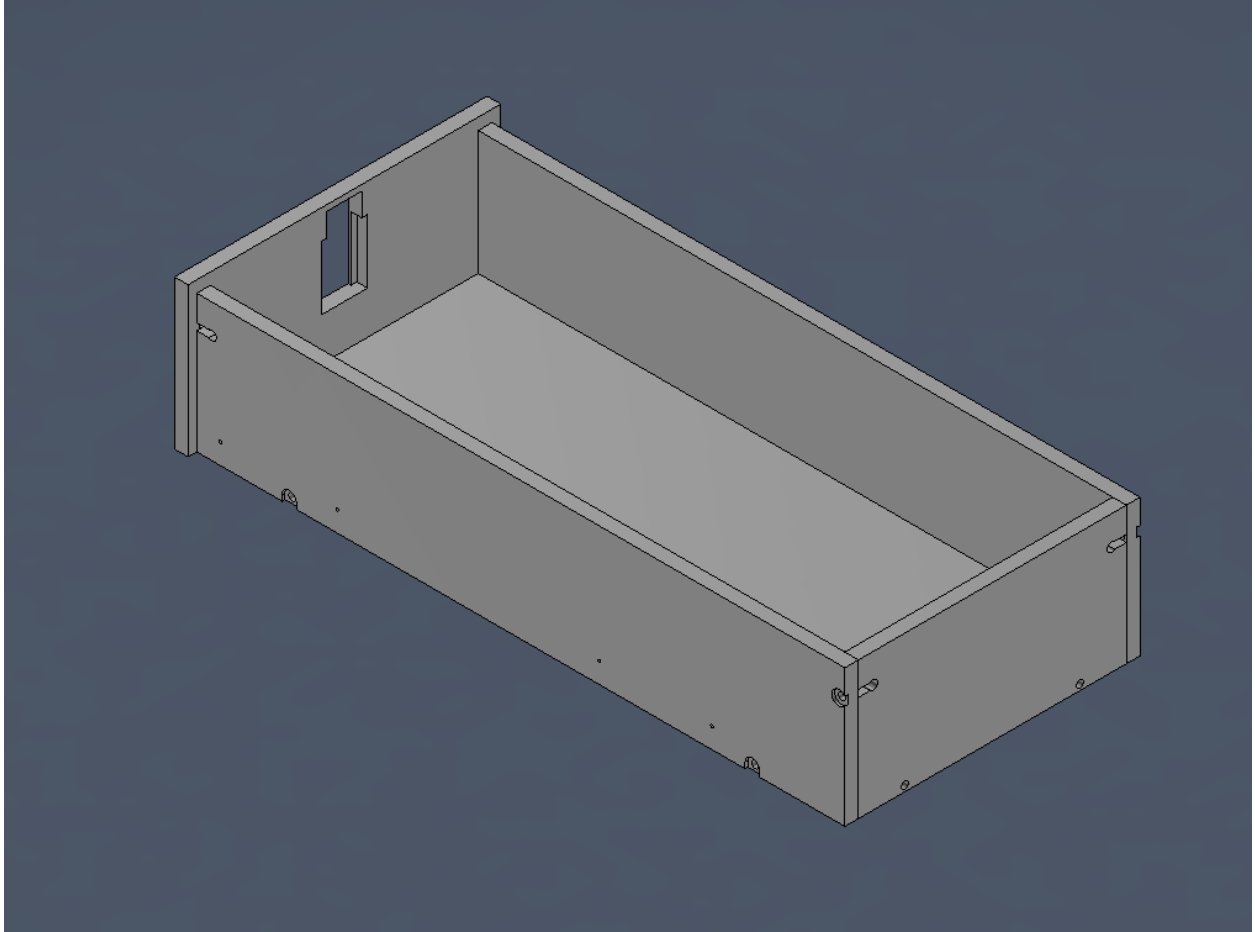
4. Assemble 40% seat delete using a 5/16 Allen key.
 - a. Assemble the base per the figure below. Install a threaded dowel into each hole with the screw driver alignment slot facing out. Start all fasteners, but leave them loose for adjustment. Note the orientation

of the keyholes to aid in assembly. For the two drawer supports, they must be installed so that the 2 pilot holes that are close together are facing toward the drawer opening (see both pictures below)





- b. Assemble the 40 % Drawer per the figure below. Just as before insert the threaded dowels into each hole with the screw driver alignment slot facing out. Start all fasteners, but leave them loose for adjustment. Note the orientation of the keyholes to aid in assembly. Like before make sure that the two holes that are close together on the drawer sides face the drawer front. Also, the bottom panel must be placed with the keyholes facing down. Lastly, the drawer face has a recess on one side. That recess must face the interior of the cabinet

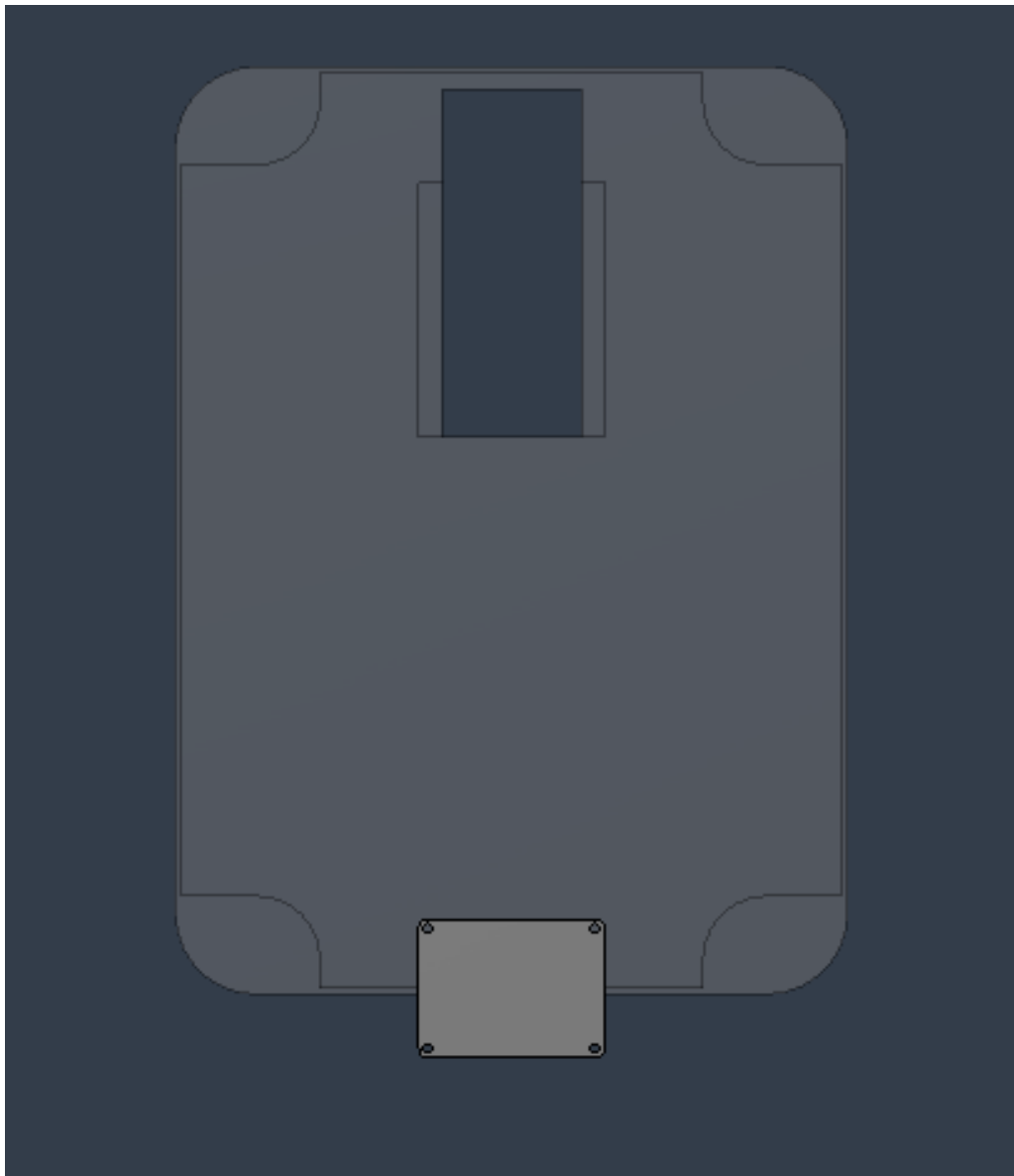


- c. Install the drawer slides on the 40% base and drawer. Open up the pack of drawer slides. One at a time, extend the drawer slide fully and where the two halves of the drawer slide meet, there is a plastic tab. Push this tab down and you can separate the slide. The larger half goes on the cabinet while the smaller half goes on the drawer. Using the $\frac{1}{2}$ " screws we provided (NOT THE ONES THAT COME WITH THE SLIDES) screw the drawer slide into the drawer using the pre drilled holes as reference. Using the $\frac{3}{4}$ " screws we provided (NOT THE ONES THAT COME WITH THE SLIDES) screw the drawer slide into the cabinet using the pre drilled holes as reference.

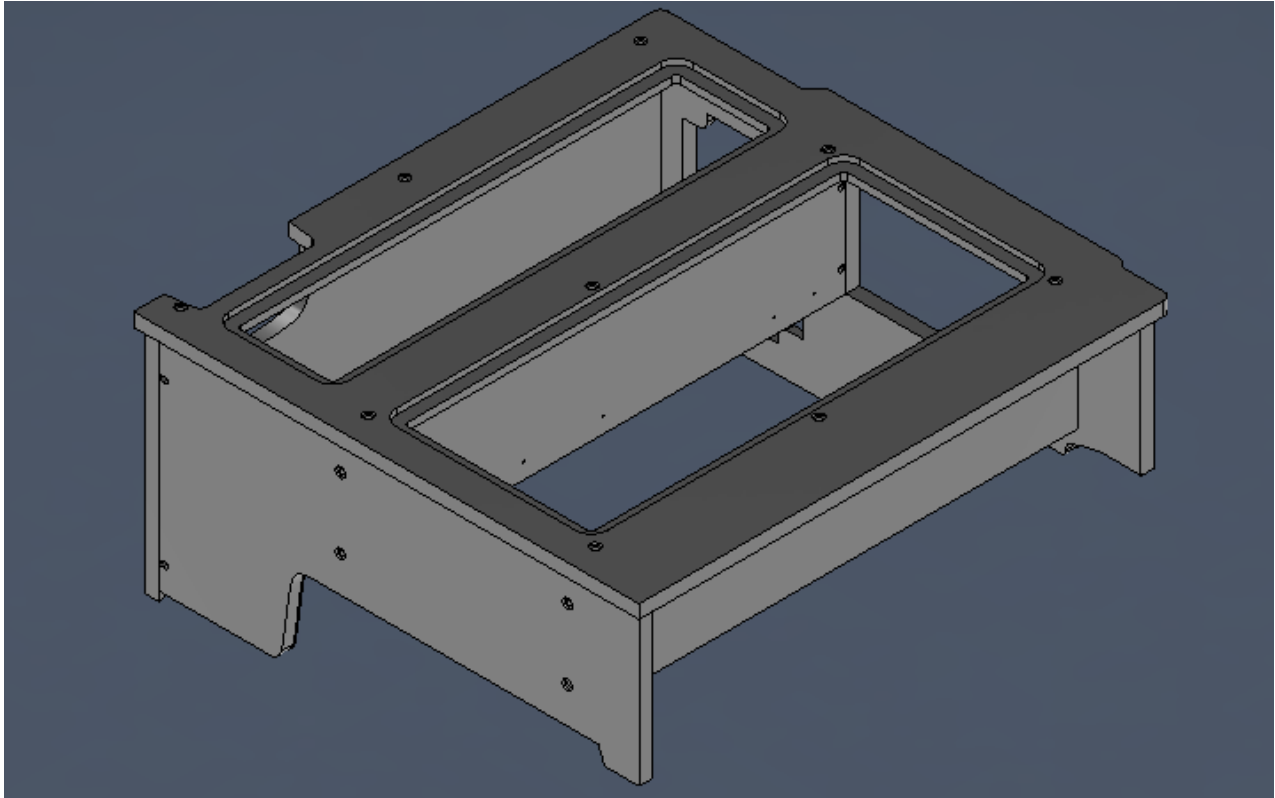


- d. When inserting the drawer into the cabinet, make sure the bearing pack is pulled to the front of the drawer opening. Be careful when inserting the drawer to make sure the drawer slides are set inside of the bearing pack. We cannot warranty damaged bearing packs due to miss installation. When you install your drawer for the first time you will feel a slight resistance when pushing it in. Once it is fully engaged, it should then slide smoothly. If you feel consistent resistance, you may need to tap your drawer supports on the cabinet apart slightly to make a larger space for the drawer.

- e. Install the latch on the drawer. If your drawer has a bolt in the latch, take it out as you will not be using that. Remove the u Clamp off the back of the latch. Your latch should now slide into the hole. Once it is in the hole, put the U clamp back on and tighten the bolt to reinstall it.
- f. Install the latch on the cubbie door the same way you did above. On the bottom of the inside of the cubbie door you will need to install your mending plate. Use the $\frac{3}{4}$ " screws we provided using the pre drilled holes as reference.



- g. Install the 40% Delete top. Once in place and alignment is achieved, tighten all bolts down to a nice hand tight snug fit. DO NOT OVERTIGHTEN.



5. Install the seat deletes into the truck
- Before installing the seat deletes into the truck remove all drawers, doors and lids to reduce weight. Set the 60% side in the truck as it requires the most room to maneuver, if possible two people make this much easier. One inside the truck and one outside the truck. Once the 60% Side is roughly in place, you can set the 40% inside the truck.
 - Using the L brackets provided, and your factory seat belt bolt, loosely bolt the L brackets to the floor of the truck. Using 3 of the $\frac{3}{4}$ " screws we provided attach the L bracket to the center facing panel of the seat delete. Once attached to the seat delete you can tighten the seatbelt bolt to the truck. Do this for both sides.

- c. Re install all doors, drawer and lids into the seat delete and you are finished!