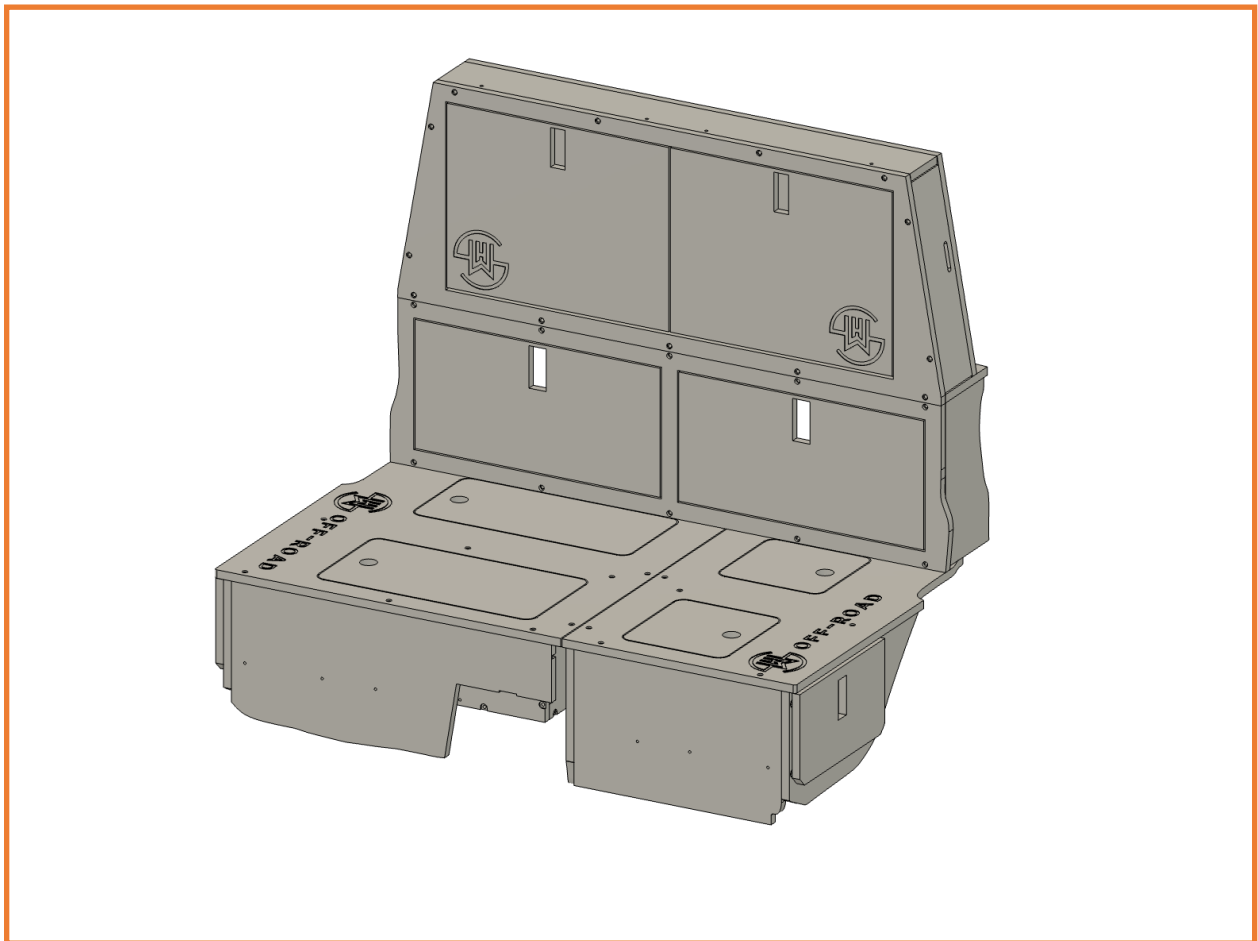
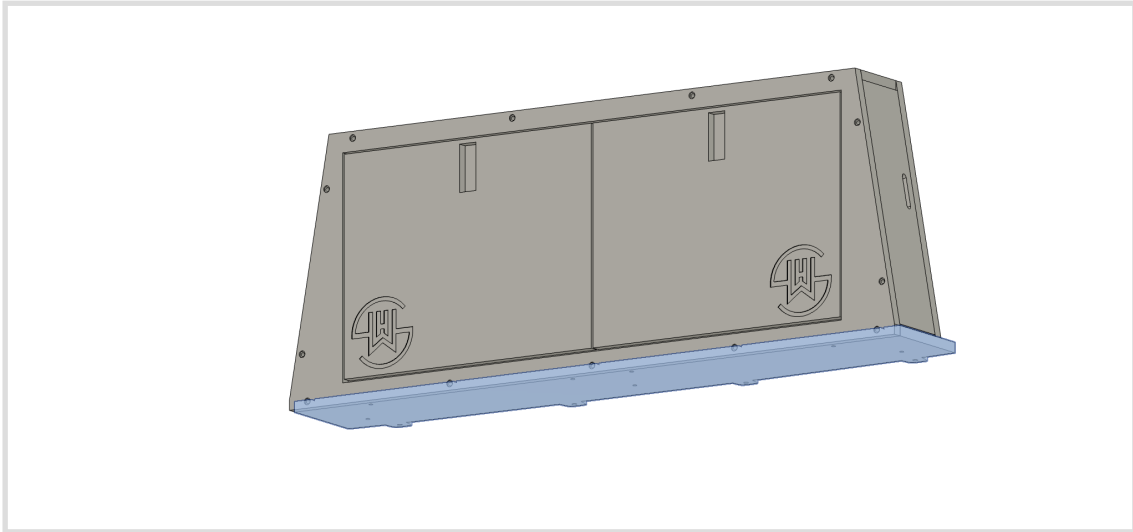


SHW OFFROAD

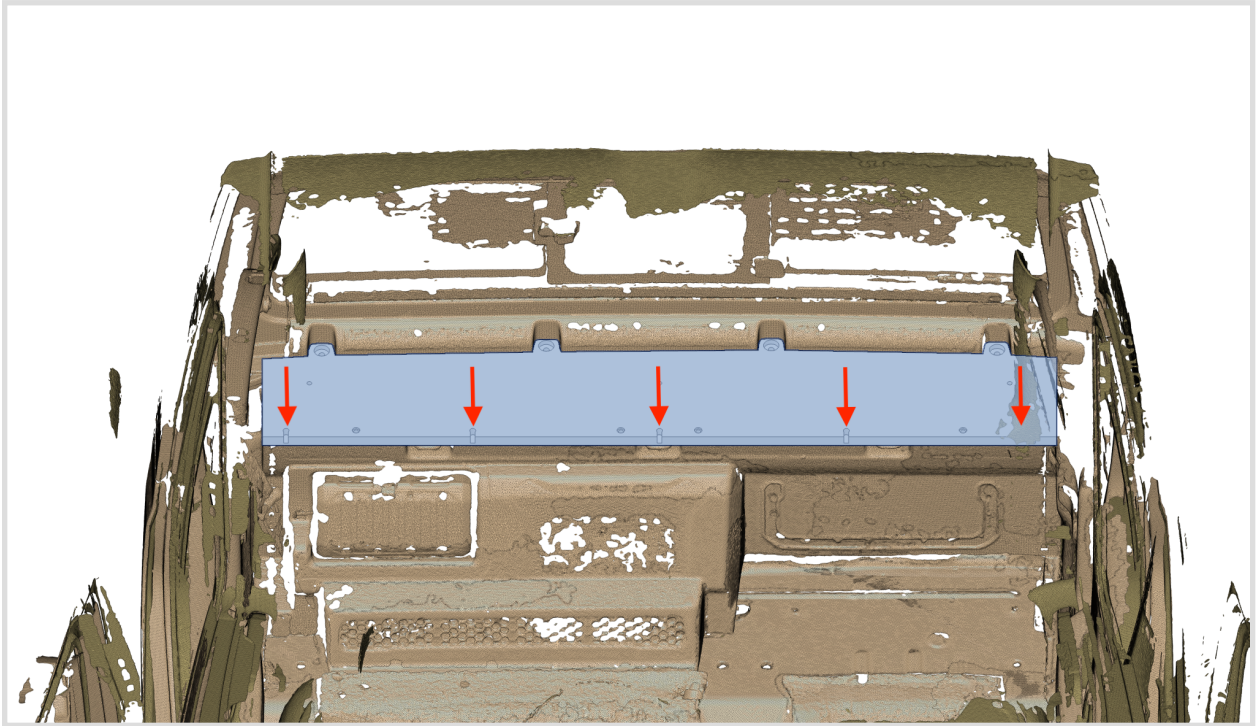
Jeep JT Seat Replacement System Install



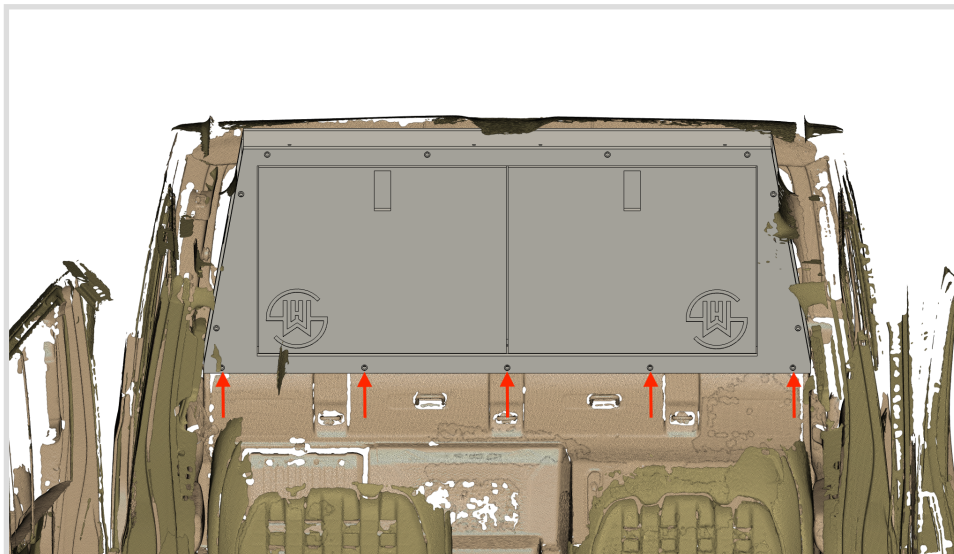
1. Remove the seats in the Gladiator. Also remove the top seat belt bolts and the bolts along the base of the hardtop where it meets the back wall of the cab. These bolts will be used to mount the Upper Decker base in step 2b.
2. Install the Upper Decker Cabinet
 - a. Remove the MOLLE panels and find the support base to prepare for install.



- b. Install the Upper Decker Base Plate using the factory hard top bolts. Place five threaded cross dowels into the keyholes (red arrows) with the screw driver alignment slot facing out. Make sure the cross dowels are aligned so that the screw driver slot is parallel with the keyhole.

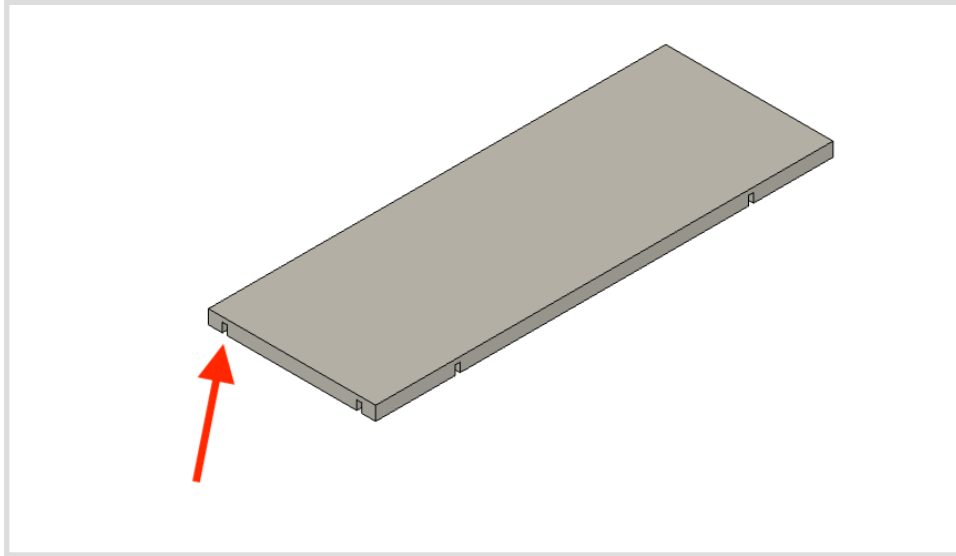


- c. Install the Upper Decker Cabinet on of of the base plate. Install 5 black machine screws into the 5 holes along the front. Do not over tighten.

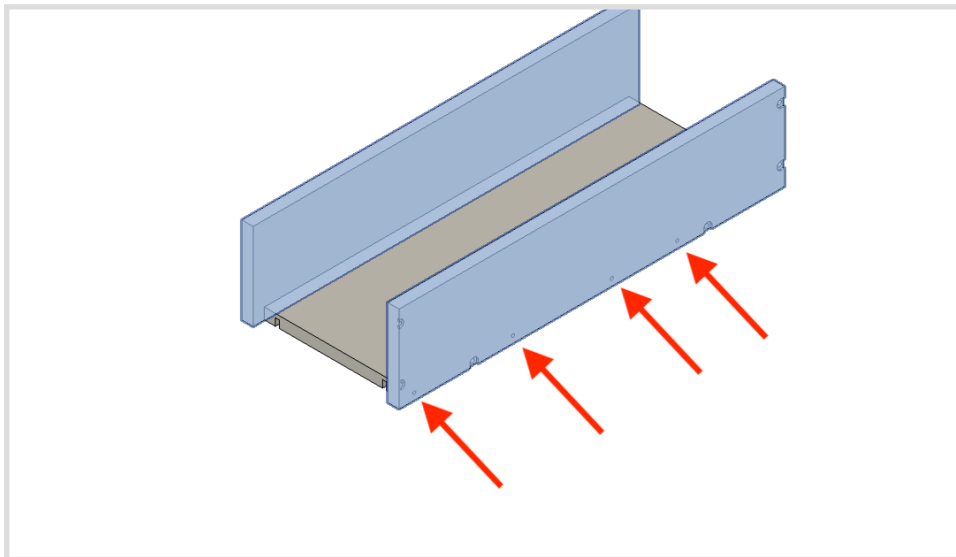


3. Assemble the seat delete drawers.

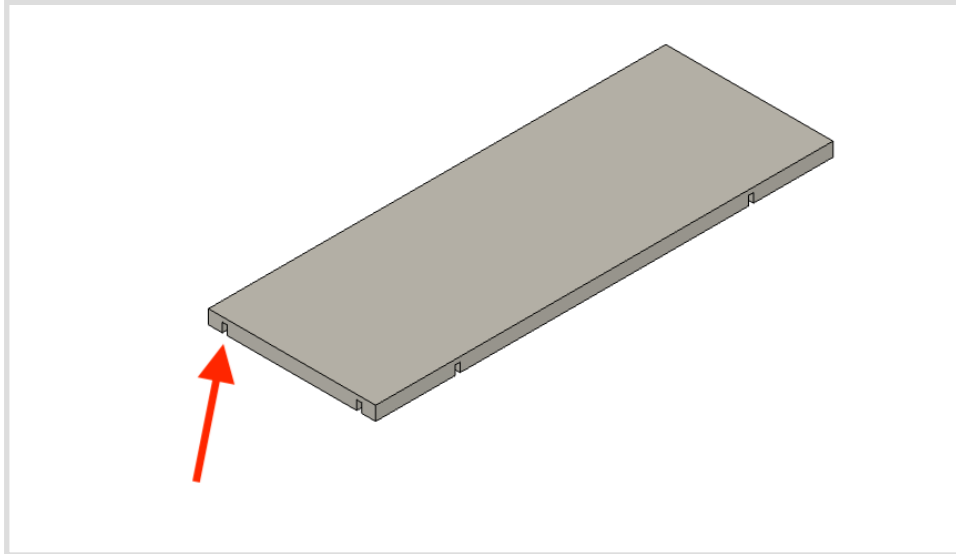
- a. Start with the 60% drawer. Find the drawer bottom. Note the keyholes facing down. Fill all keyholes with the silver threaded dowels.



- b. Attached the 60% drawer sides using black machine screws. Note the hole pattern on the sides (red arrows). Make sure they match on each side. Do not over tighten.



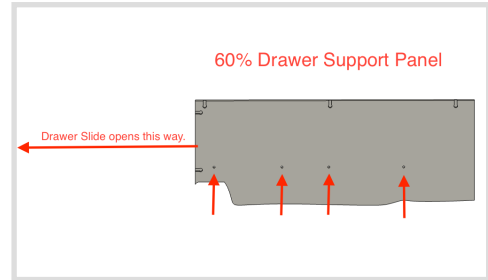
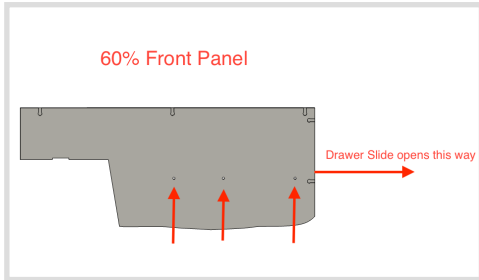
- c. Attach the 60% drawer front and back.
- d. Assemble the 40% drawer starting with the drawer bottom. Note the keyholes facing down. Fill all keyholes with the silver threaded dowels.



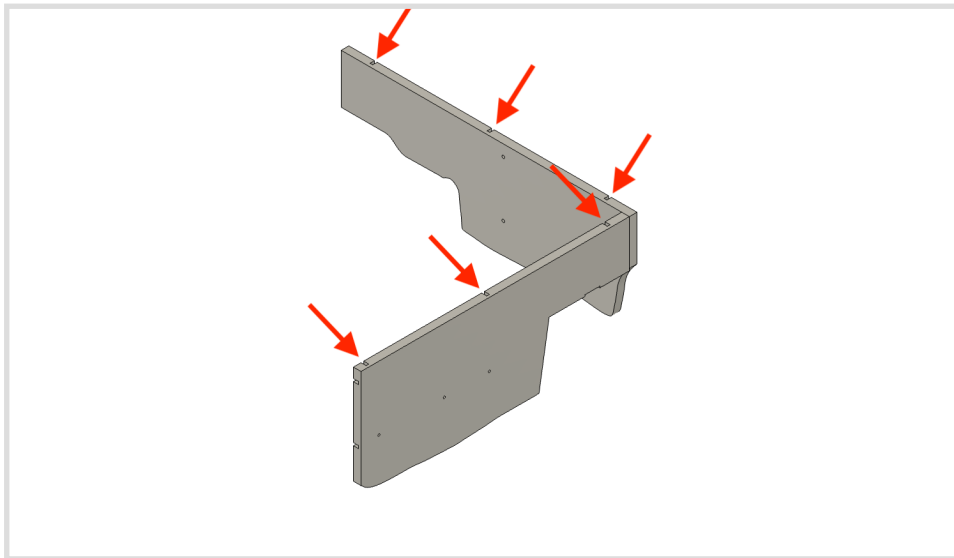
- e. Attached the 40% drawer sides using black machine screws. Note the hole pattern on the sides. Make sure they match on each side. Do not over tighten.
- f. Attach the 40% drawer front and back.

4. Assemble the 60% seat delete

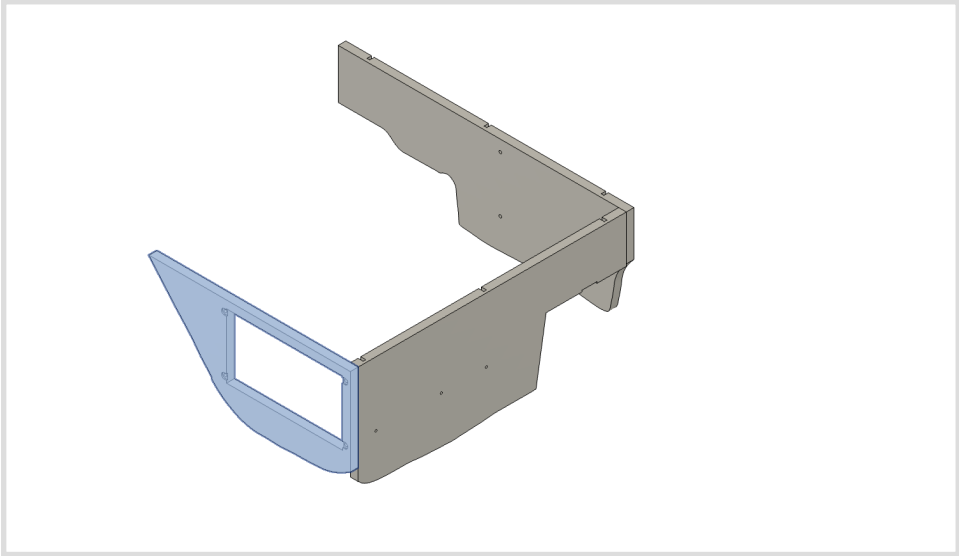
- a. Use the 8-32 phillips head machine screws to attach the longer drawer slides to the 60% front and 60% drawer support.



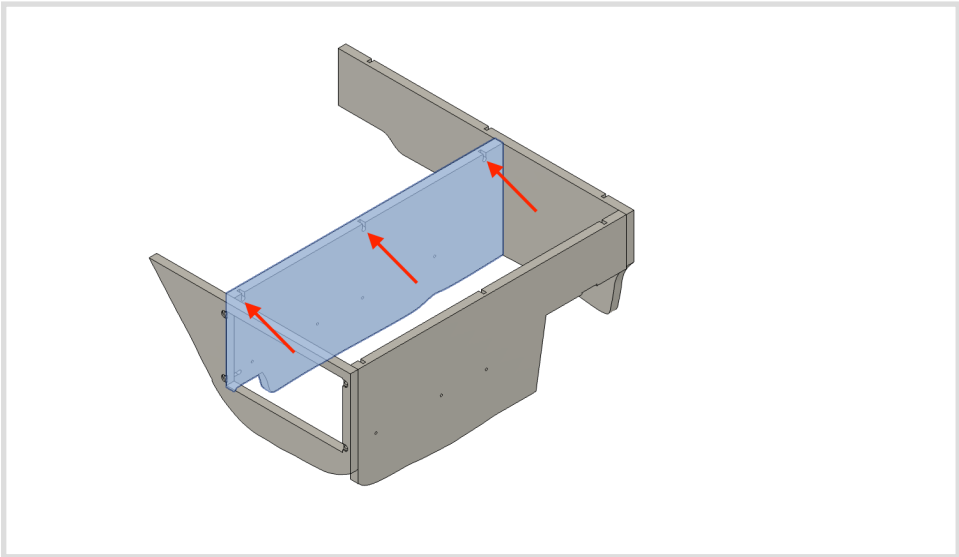
- b. Attach the 60% front panel to the 60% center panel. Note the orientation of the keyholes (marked by red arrows).



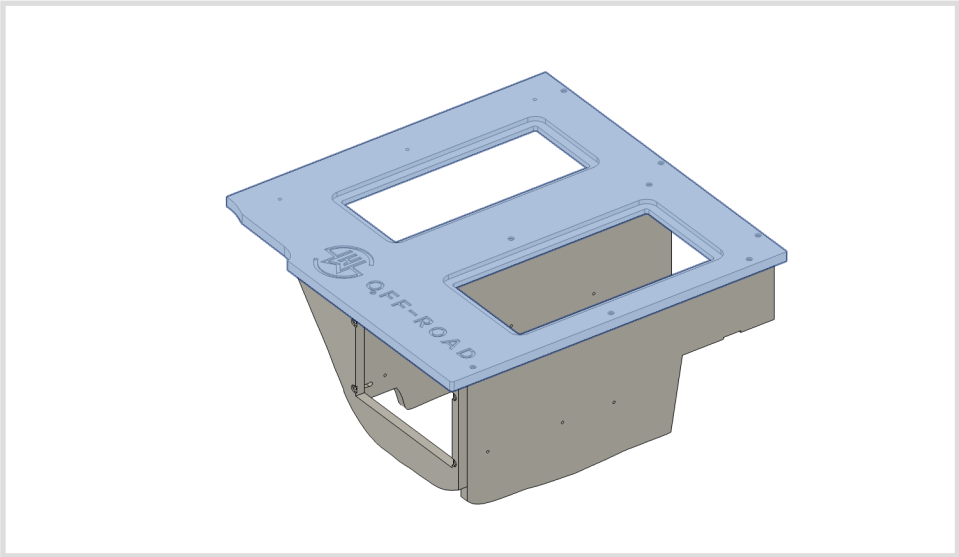
c. Attach the 60% passenger panel.



d. Attach the 60% center drawer support. Note the orientation of the keyholes.

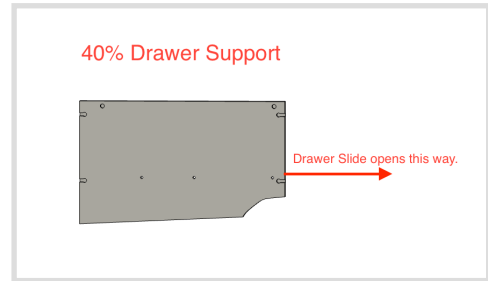
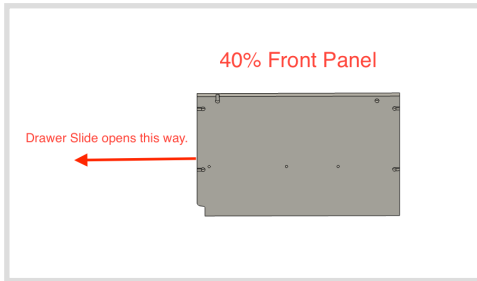


e. Make sure all threaded dowels are installed in the base then install the 60% top.

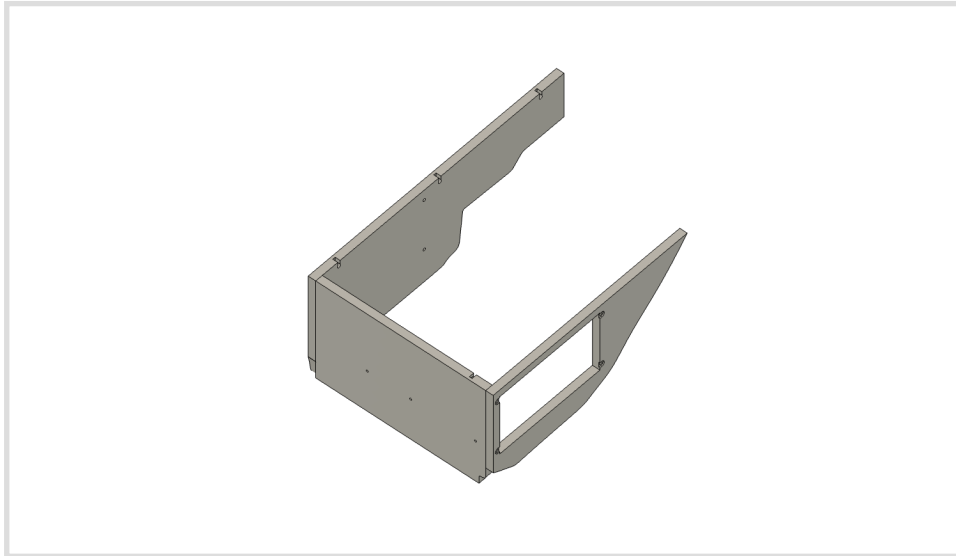


5. Assemble the 40% Delete.

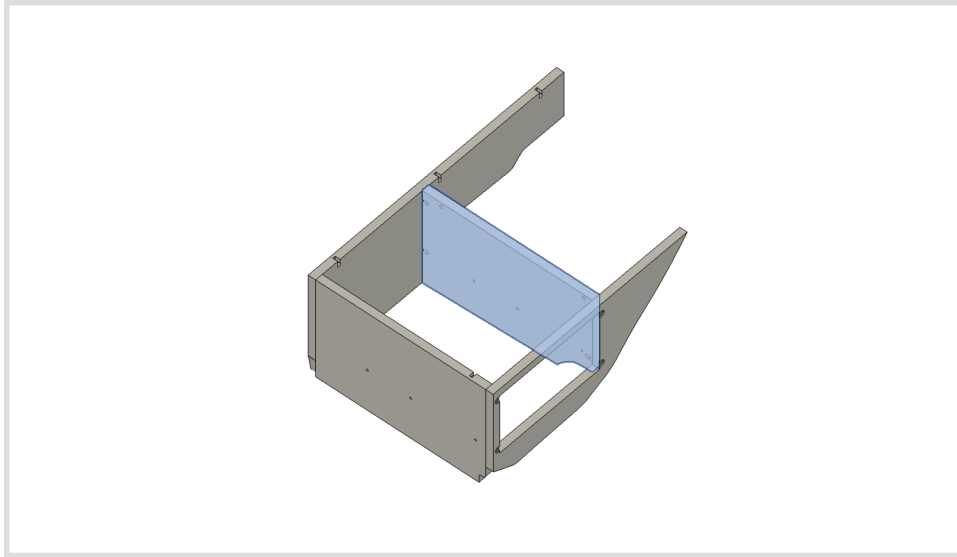
- a. Use the 8-32 phillips head machine screws to attach the longer drawer slides to the 40% front and 40% drawer support.



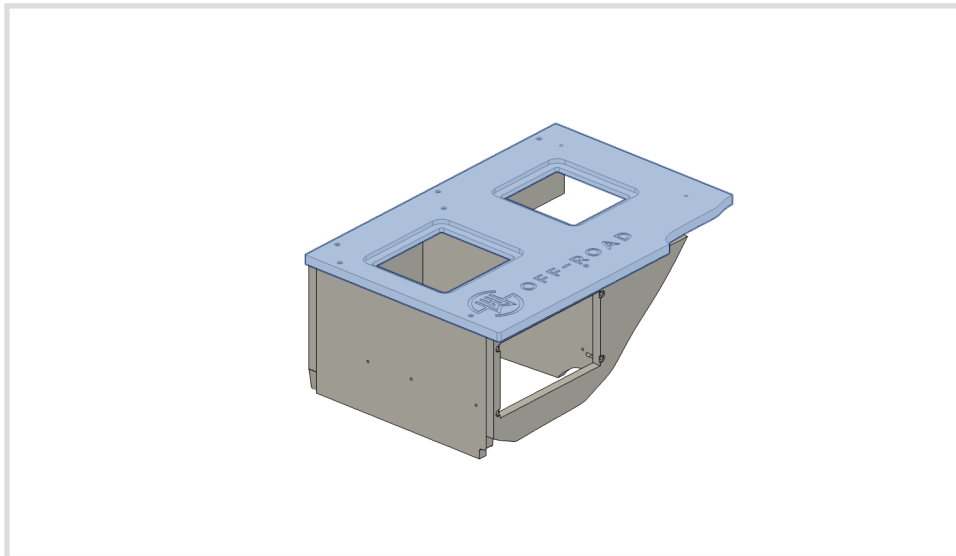
- b. Attach the 40% front panel, 40% center panel, and 40% driver side panel. .



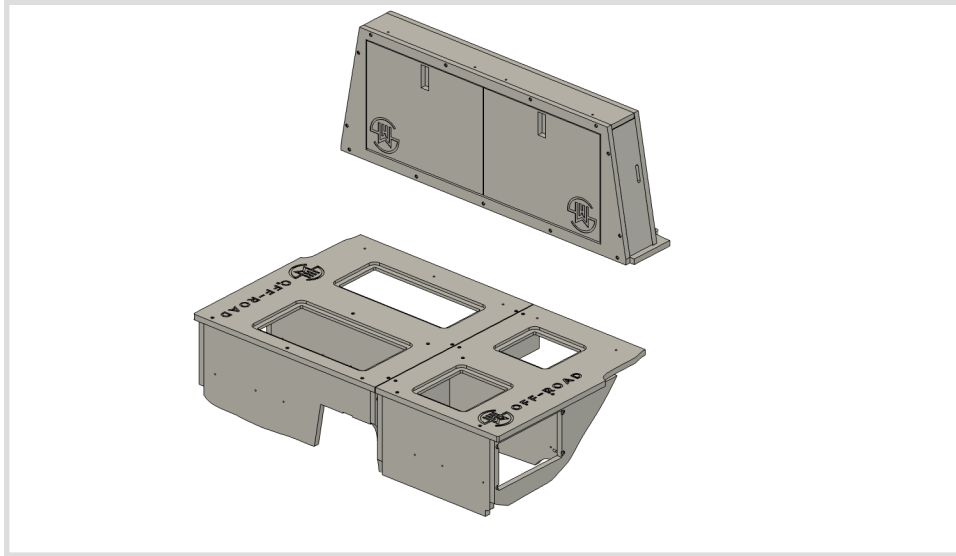
c. Attach the 40% center drawer support. Note the orientation of the keyholes.



d. Make sure all threaded dowels are installed in the base then install the 40% top.

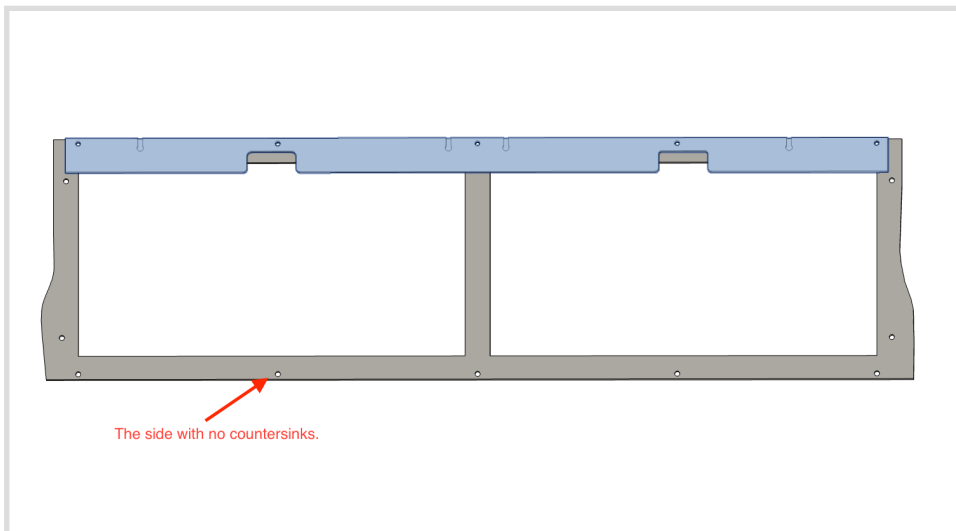


6. Place the seat deletes into position.

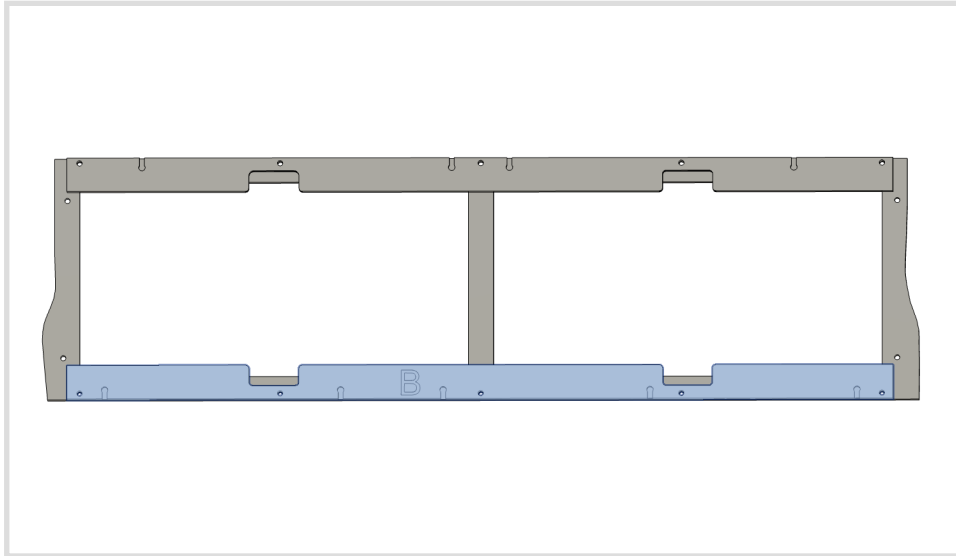


7. Assemble the mid panel.

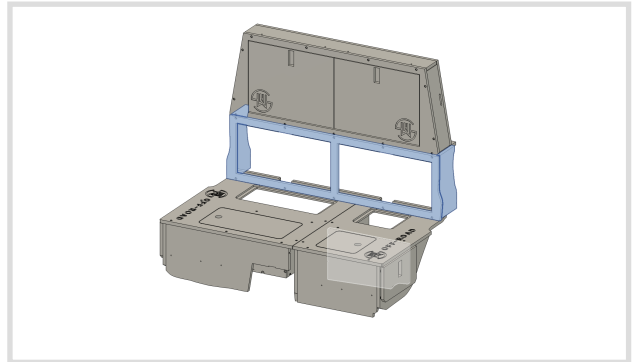
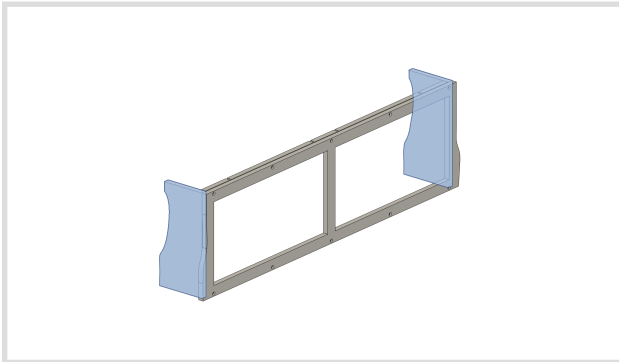
- a. Attach the top latch bar/runner to the back of mid panel using black machine screws.



- b. Attach the bottom latch bar/runner to the back of mid panel.



8. Attach the mid panel wings to the mid panel. Line up the holes with the cross dowels and install the bolts from the bottom and top of the mid panel, through the seat deletes and Upper Decker respectively. You may need to force the upper decker up slightly to fit the mid panel in place.



9. Install the upper seat belt bolts through the slots in the Upper Decker. Install the MOLLE panel in the Upper Decker.

10. Install the lower seat delete brackets using the factory seat bolt and a square head screw on each seat delete.



11. As always, call 859 749 8588 with any questions!