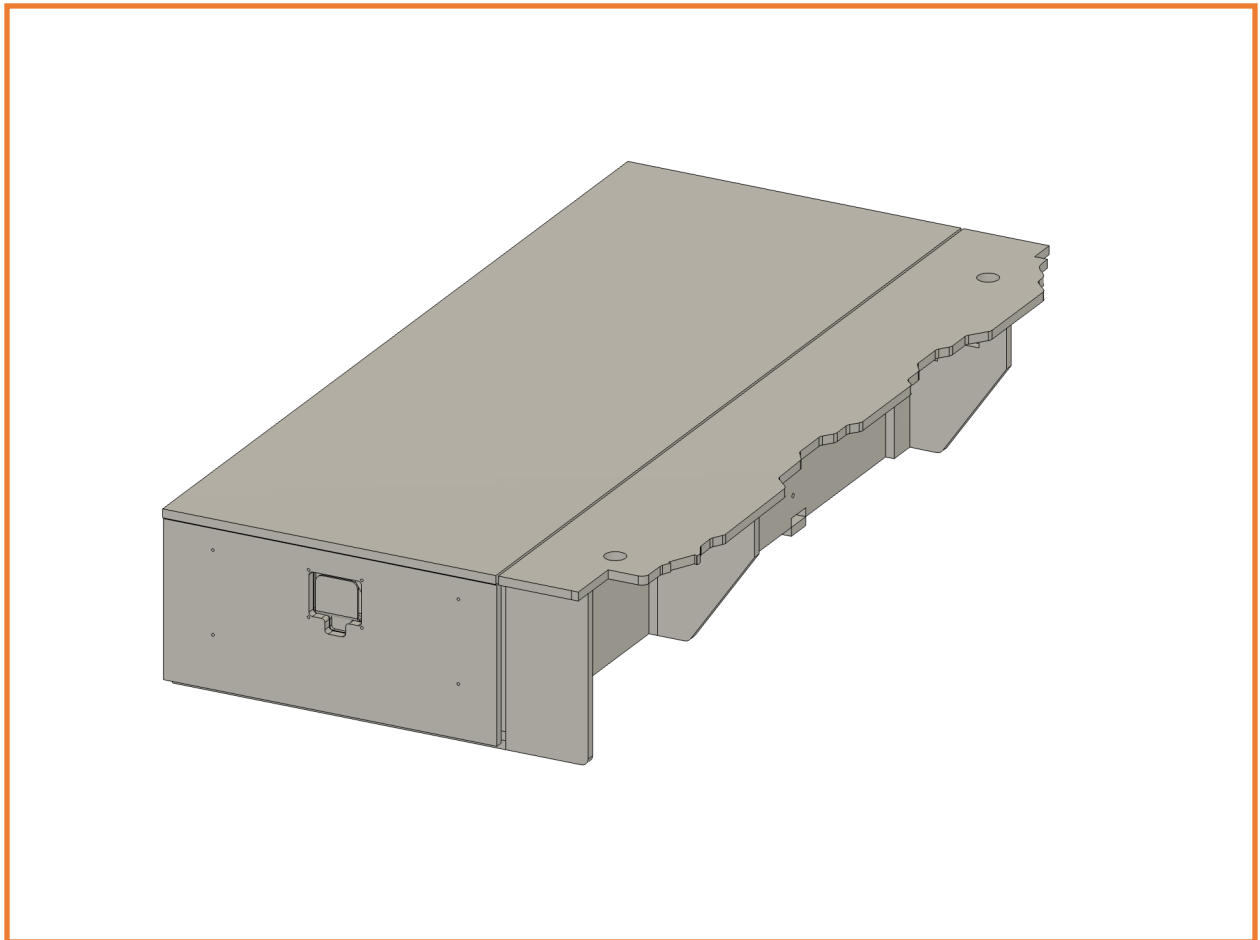
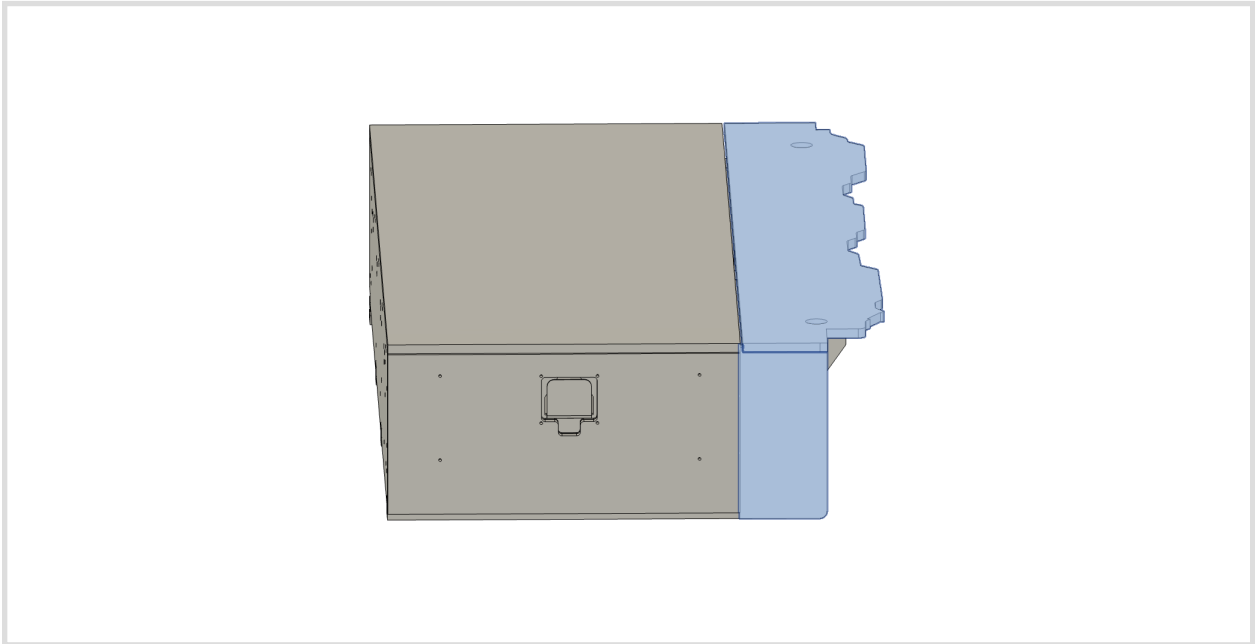


SHW OFFROAD

F150 Half Bed Drawer System Install



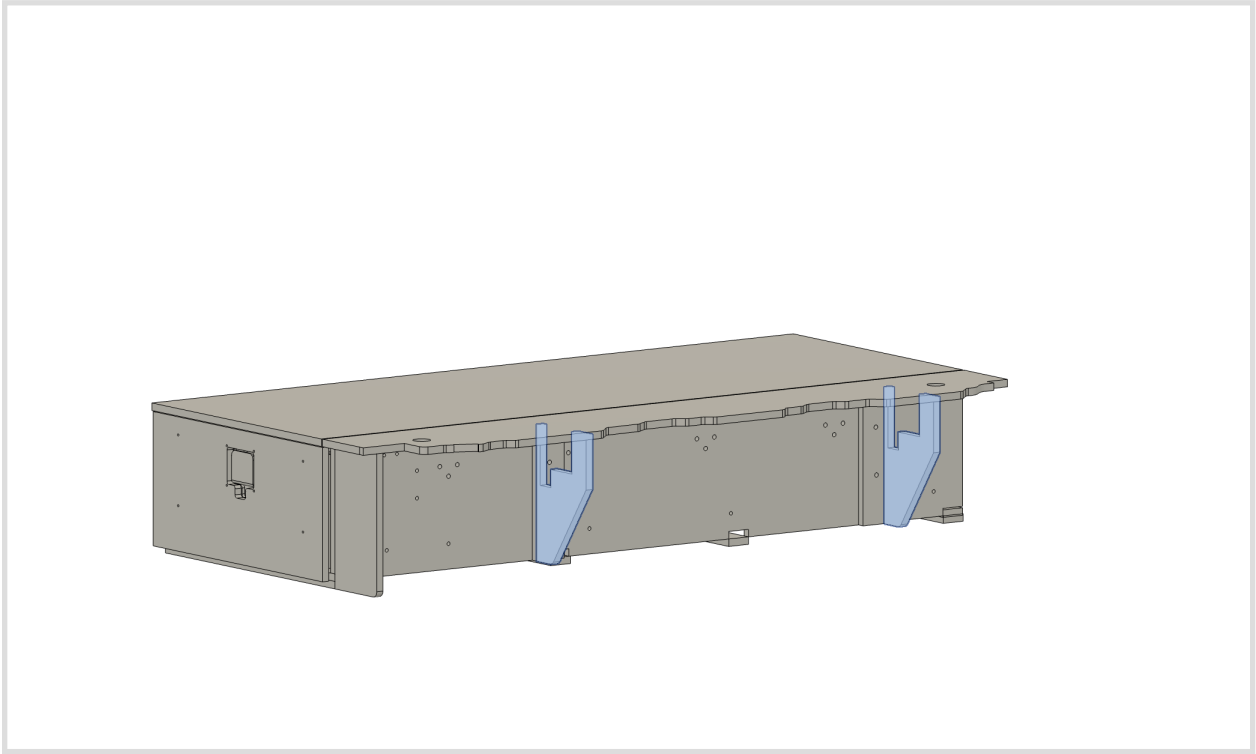
1. Begin by installing the wing cap and wing. Make sure the wing and wing cap are oriented in the correct direction when installing them into the threaded holes in the drawer system. There will be extra holes in the side of the drawer system, use the holes that line up with the hinges on the wing when the wing is lined up with the top of the drawer system.



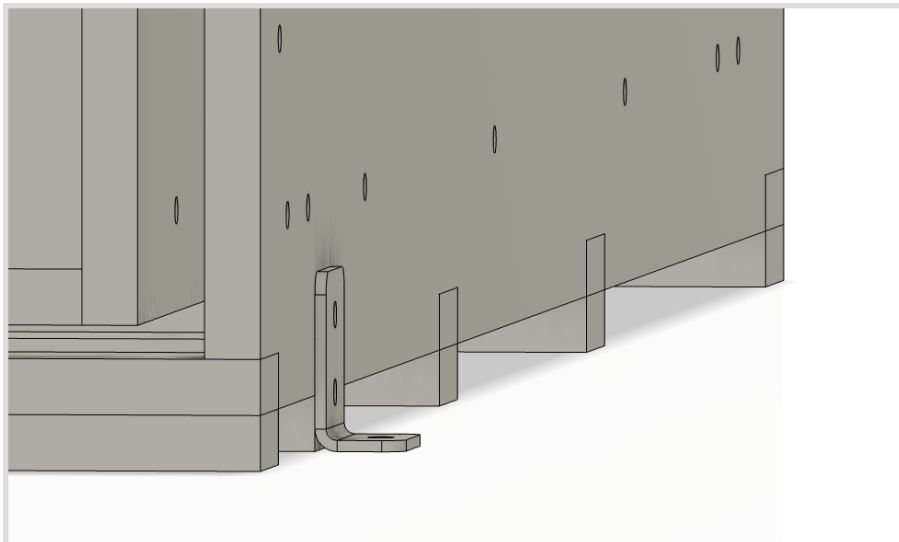
2. The wings can be adjusted to pull them closer to the drawer system and to level them with the deck of the drawer system. Just make sure the the wing has a big enough gap between it and the drawer system that it doesn't rub on the corner where the wing hinges up. The top screw adjusts the horizontal plane and the bottom screw adjusts the vertical plane of the wing when in the down position. Use a screw driver to make your adjustments.



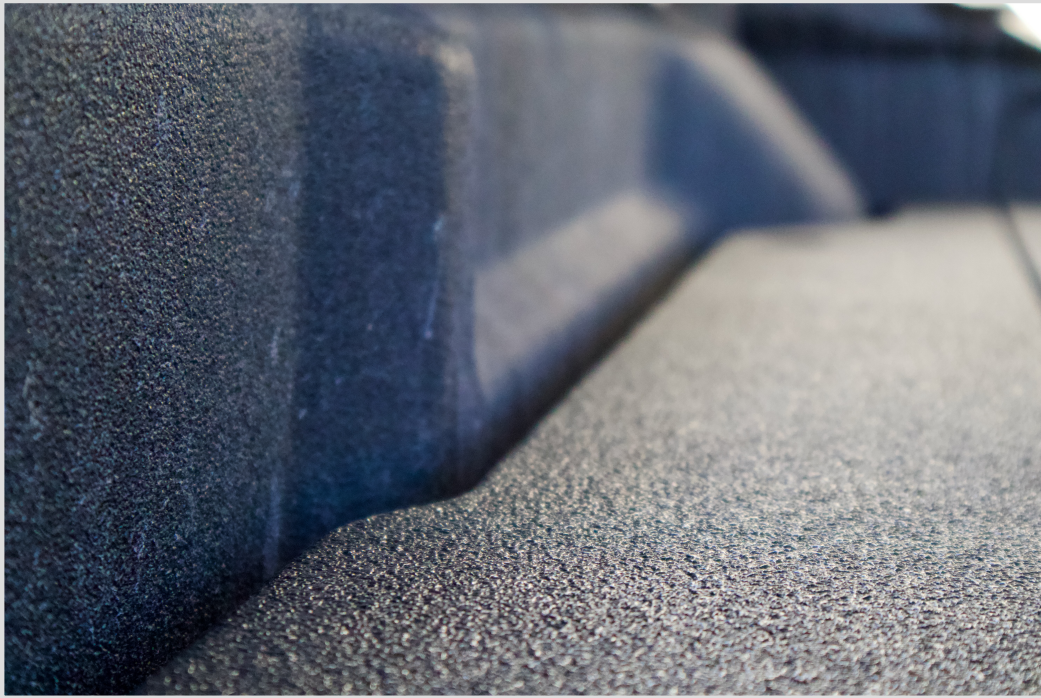
3. Install the wing support arms using the included thumb screws.



4. Check to make sure the middle L Brackets are installed on the drawer system. Install them with the included screws if they aren't already installed. Yours may be slotted. Line them up with the threaded inserts already installed in the side of the system.

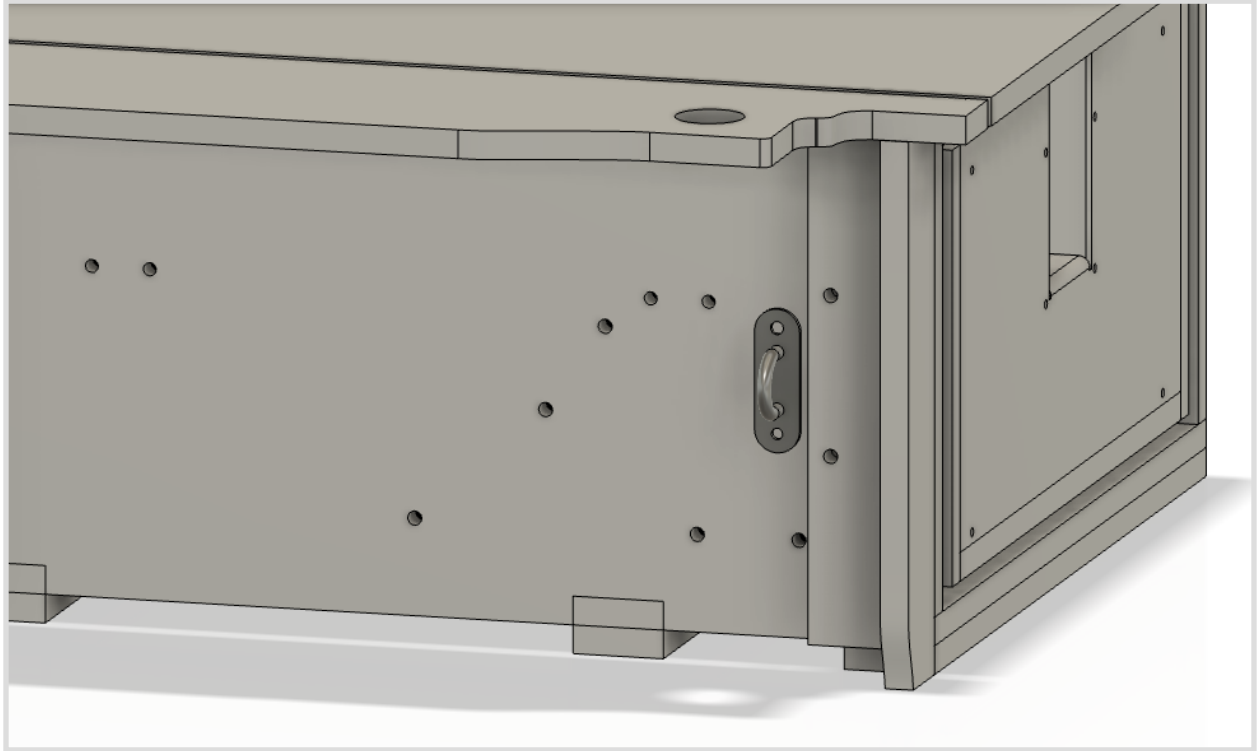


5. Flip the wing of the drawer system in the upright position.
6. Slide the drawer system into the truck.
7. Push the drawer system towards the side of the bed and towards the cab of the truck. Flip down your wing and adjust the system to make sure the wing can travel freely. Ensure the relief is the same all the way down the truck bed.



8. **DOUBLE CHECK** that the wing travels without rubbing the side of the bed and that you are happy with the placement. If unsure, leave a little extra room. Closer you tailgate to ensure clearance. Use a center punch to mark where you need to drill the bed for the center L Brackets. You can also use a marker to trace where the hole needs to go. You can drill with the system in the bed, but we recommend that you pull the drawer to make sure you don't mar the bracket finish when drilling.
9. Place the drawer system back in the truck and line the holes that you just drilled up with the brackets. Install the included bolts, washers, and nuts. Optional: install the included outserts instead for a easier one man install and removal. Make sure you use the included washer between the nut and the bed of the truck.

10. Install the included turnbuckle on the bed side of the system. Snug it up, BUT DON'T TIGHTEN too much. It only needs to be hand tight. We recommend some blue loctite on the threads to keep the turnbuckle in place.



11. Enjoy the drawer system!

As always, call 859-749-8588 with any questions.