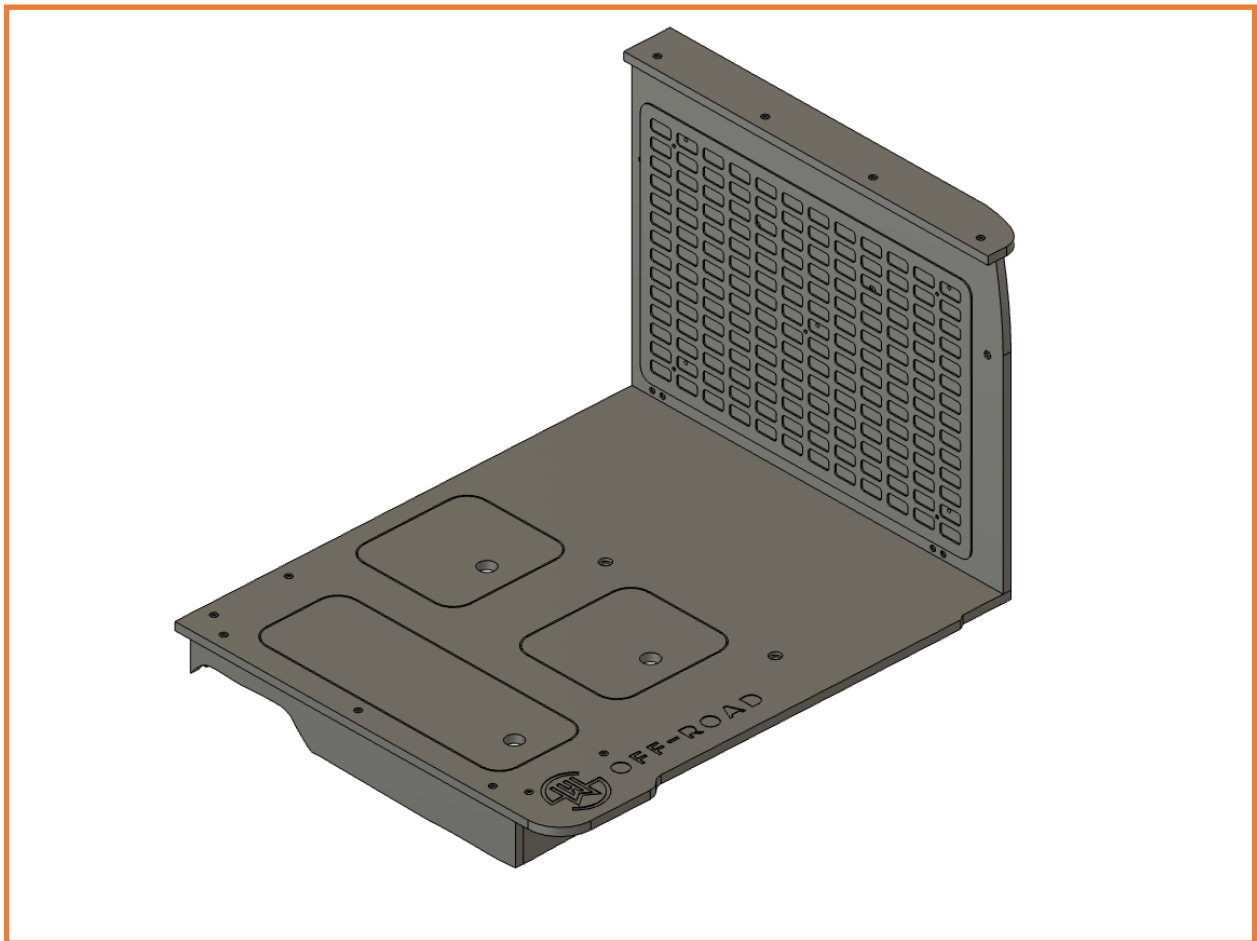
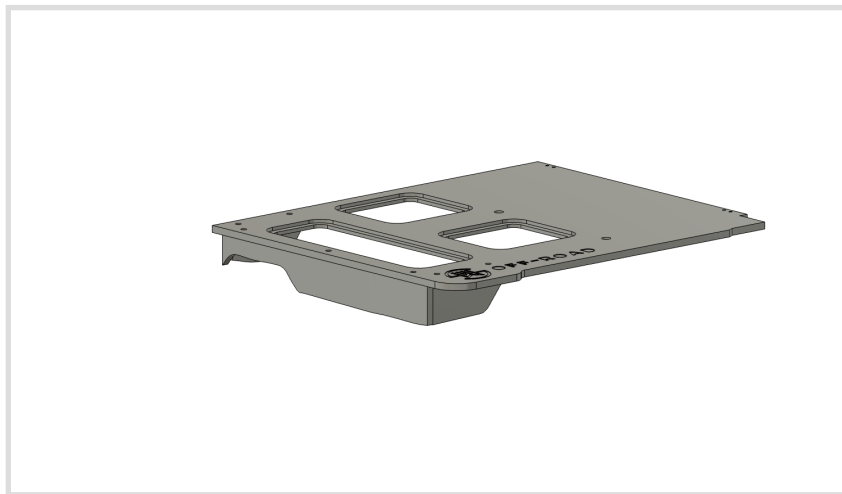
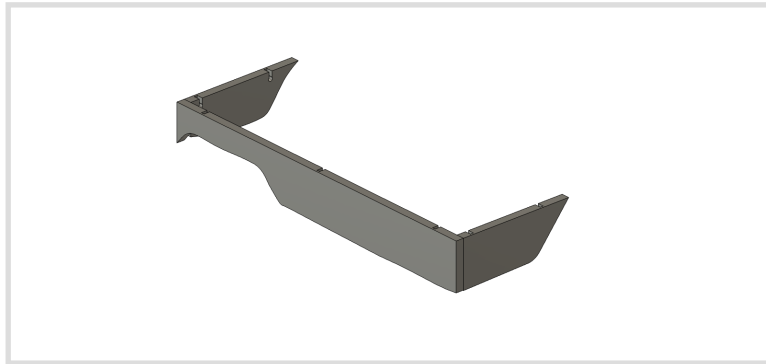


# SHW OFFROAD

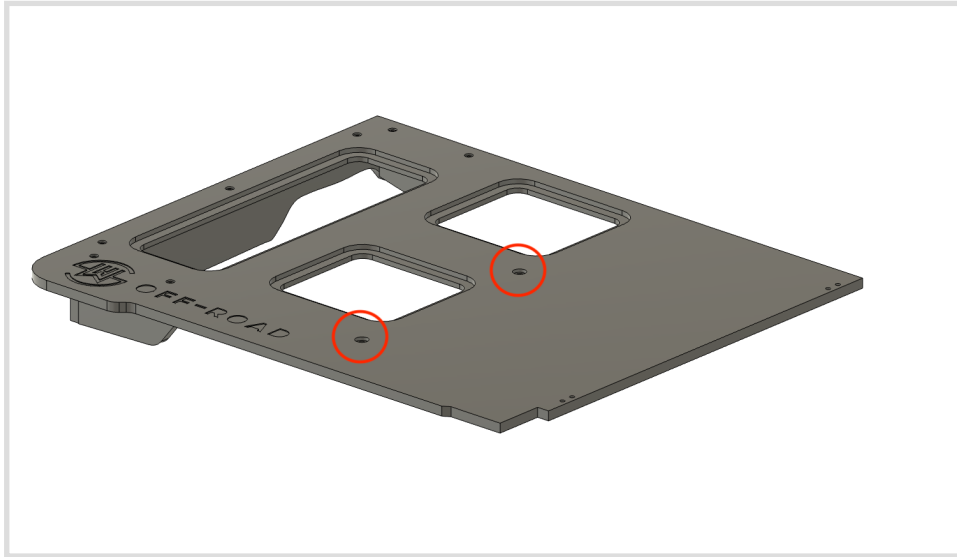
## 2.5 Gen Tundra Seat Delete Install



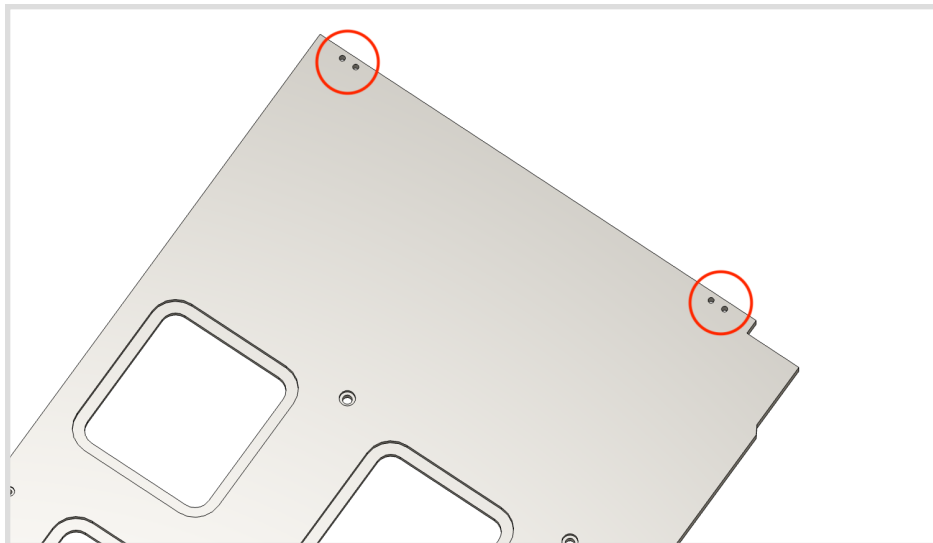
1. Remove the seats in the Tundra.
2. Assemble the delete outside the vehicle. Attach the base pieces to the delete top one piece at a time using the 1/4-20 black machine screws. See figure below for the location of each piece. Loosely tighten all fasteners, DO NOT OVER-TORQUE.



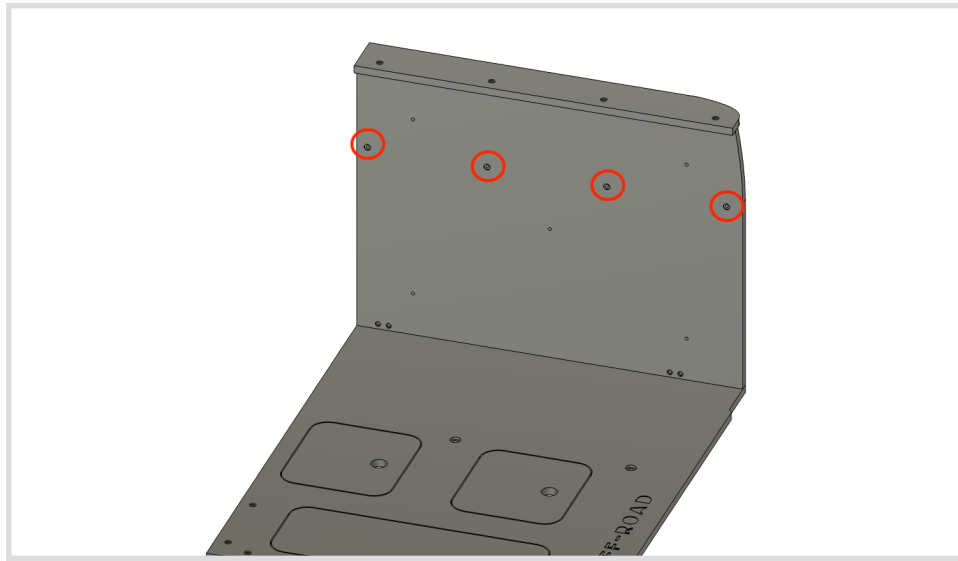
3. Loosely install the included bolts into the factory seat threaded holes.



4. Attach the L brackets to the seat delete top. These will be used to anchor the back wall into place.

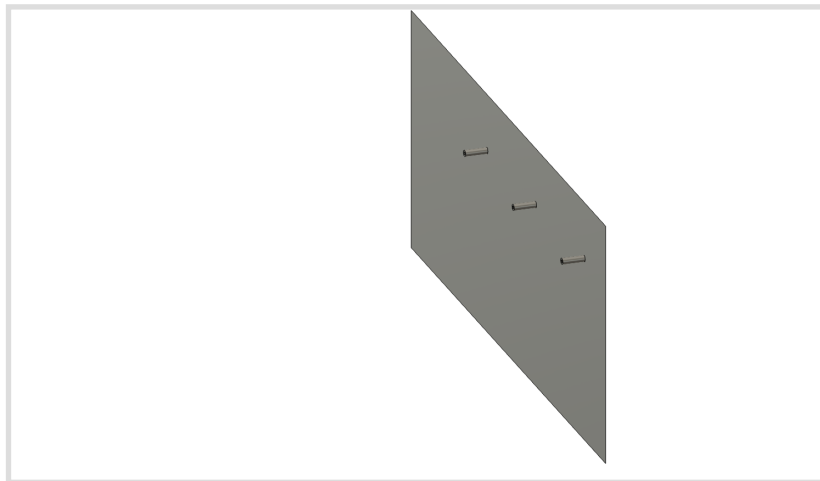
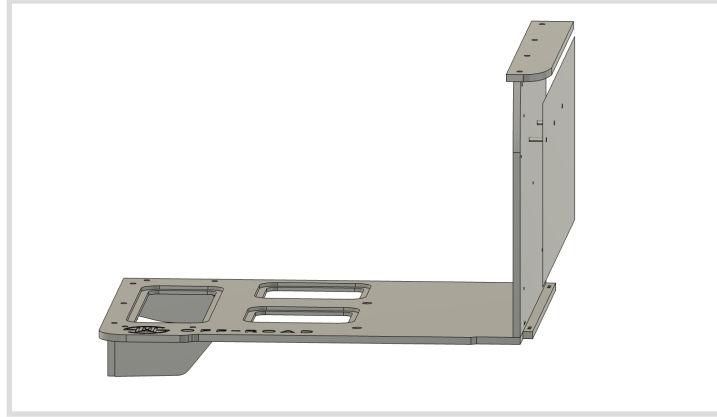


5. Place the back wall into position. Using the holes as a guide, mark the spots to be drilled in the rear window cover panel. **MAKE SURE THE WINDOW IS ALL THE WAY UP.** First cut through the factory insulation panel, then replace the back wall and mark the panel to be drilled. You may find it easier to remove the MOLLE panel while marking.



6. Remove the rear window cover panel and drill the holes at the marks made in step 5.

7. Install the included threaded standoffs with the included 1/4-20, 3/4" screws into the window cover.



8. Reinstall the rear window cover.
9. Reinstall the back wall using the black 1/4-20 machine screws. Torque to snug. Install screws that secure the back wall to the L Brackets at the base.
10. Tighten the seat delete top plate factory seat bolts.

11. Install the lower seat delete brackets using the factory seat bolt and a square head screw on each seat delete.

12. As always, call 859 749 8588 with any questions!