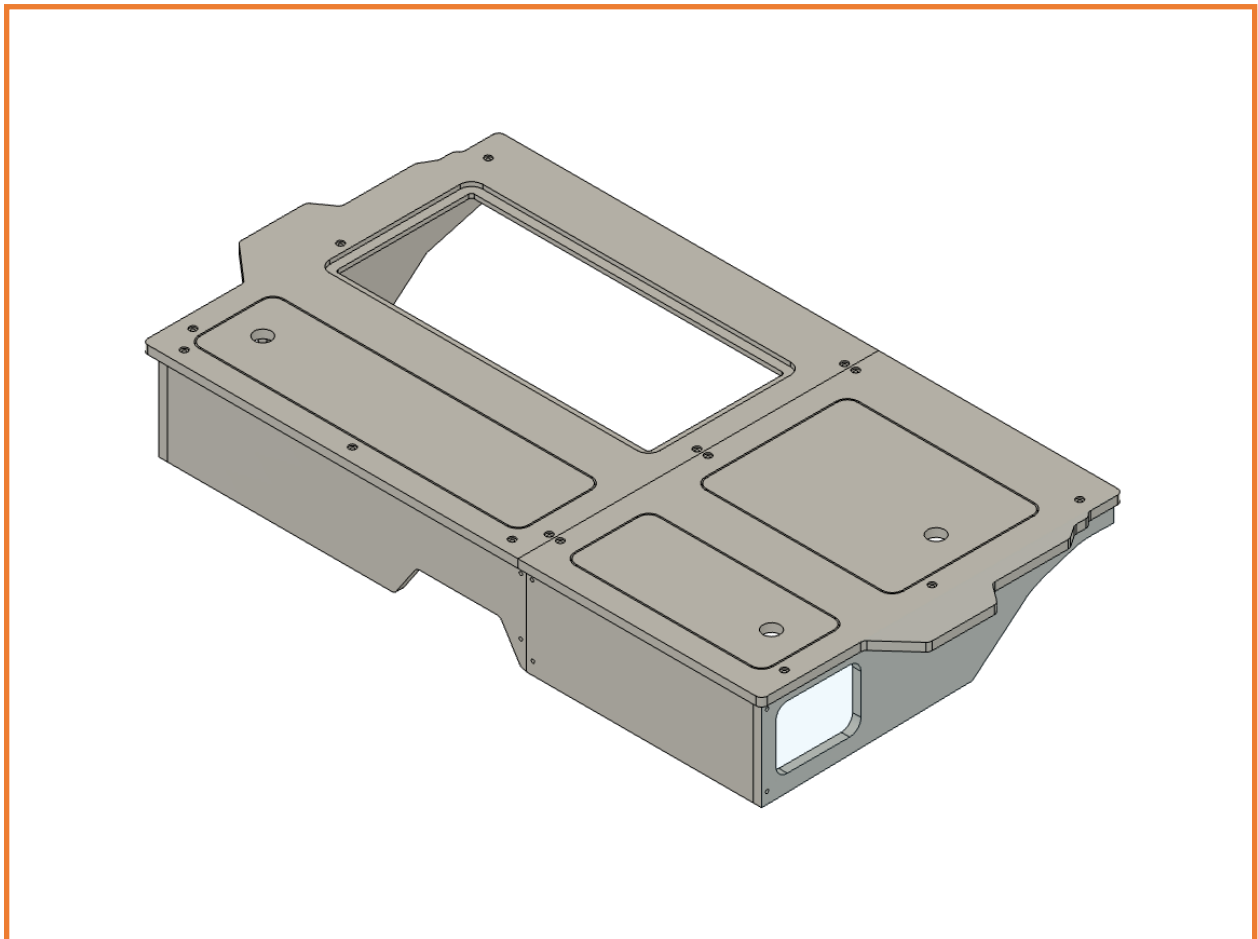
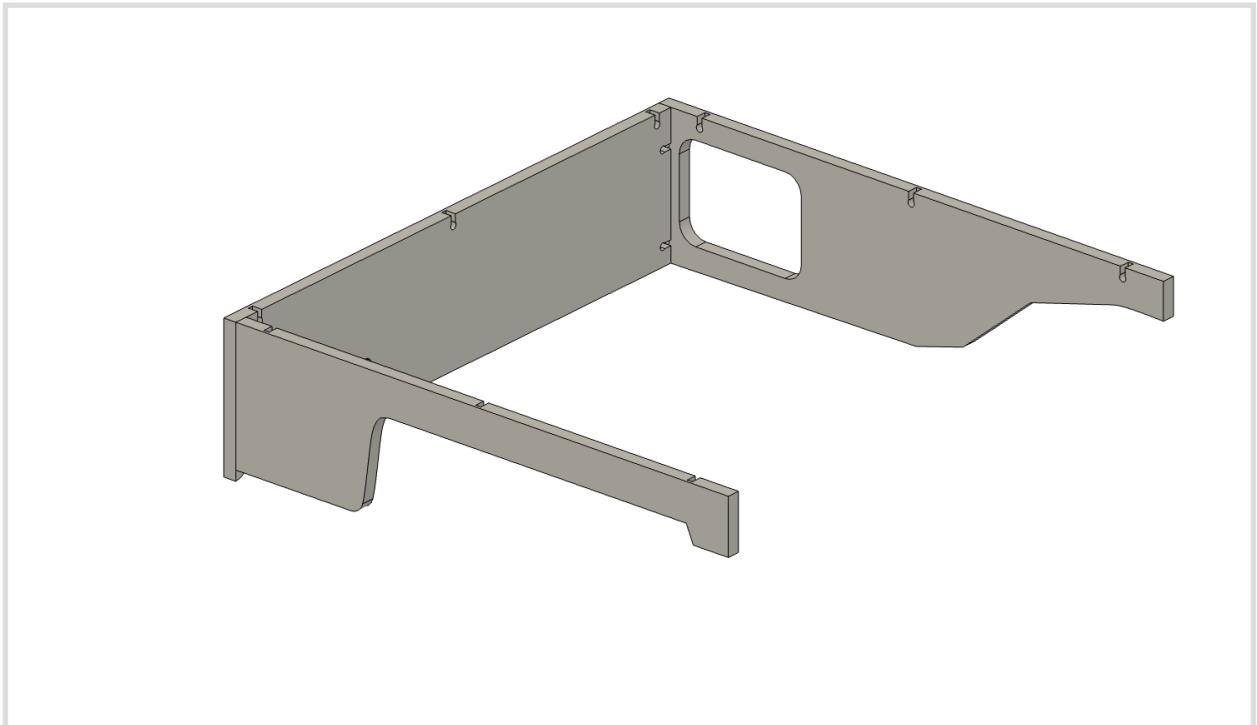


SHW OFFROAD

Toyota Tacoma Seat Replacement System Install-
Standard Height

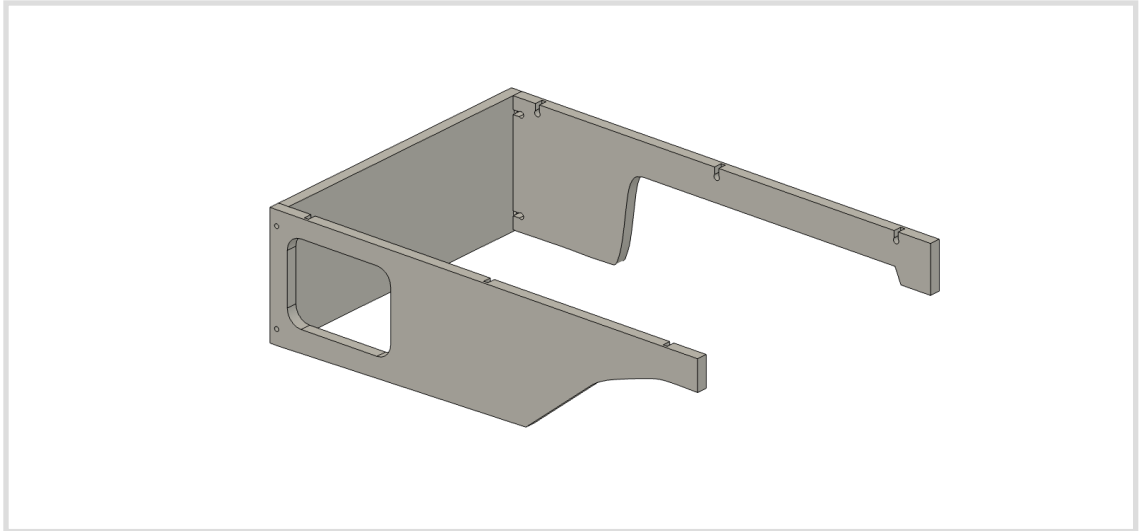


1. Remove the seats in the Truck. Be sure to save all OEM bolts. Remove the factory storage bin lids.
2. Remove all the seat delete pieces and sort them into piles.
3. Assemble 60% seat delete using a 5/16 Allen key.
 - a. Assemble the base per the figure below. Install a threaded dowel into each hole with the screw driver alignment slot facing out. Start all fasteners, but leave them loose for adjustment. Note the orientation of the keyholes to aid in assembly.



- b. Install the 60% Delete top. Once in place and alignment is achieved, torque all bolts down. **DO NOT OVERTIGHTEN.**

4. Assemble the 40% seat delete using the same steps as the 60%. Again, mind the orientation of the keyholes to aid in assembly.



5. Place the seat deletes in the vehicle. NOTE: If installing a partial delete, you may need to remove the hinged wing that attaches to the bottom of the delete factory seat by drilling out the OEM rivet. A bolt is included with your delete to replace the rivet if required. Install the bolt with the hex nut facing out.
6. Use the included L brackets and square head screws to anchor the seat deletes to the factory seat bolt hole. NOTE: If installing a partial delete install the L bracket under the seat belt bracket on the floor instead.
7. Use one of the square head screws to fasten the seat deletes together.
8. Install the lids.

