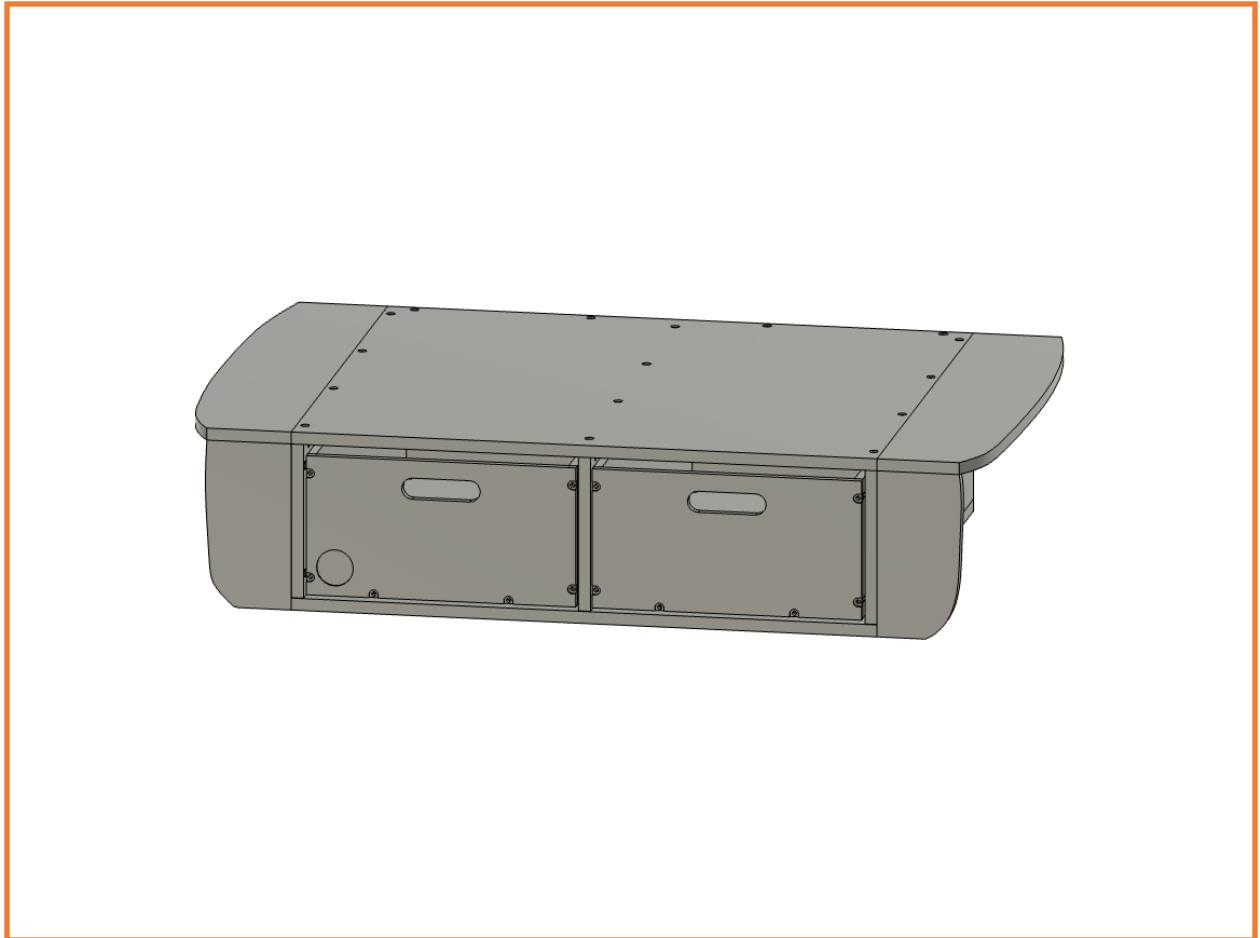


# SHW OFFROAD

## Ultralite Assembly Process

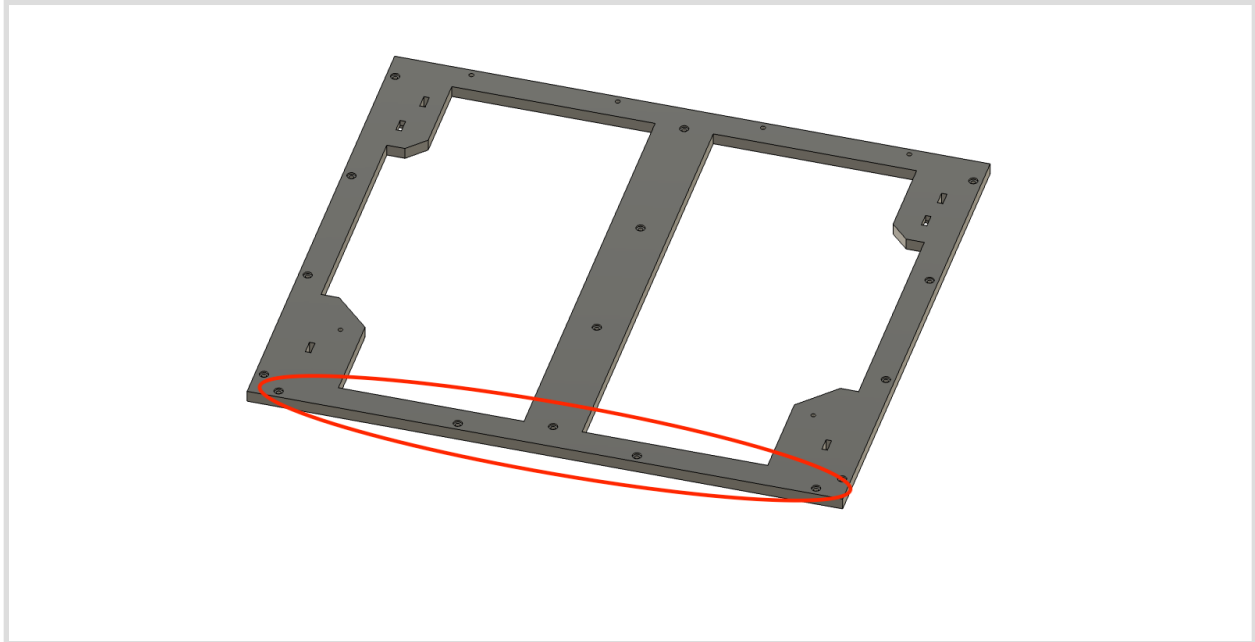


**MATERIALS LIST**

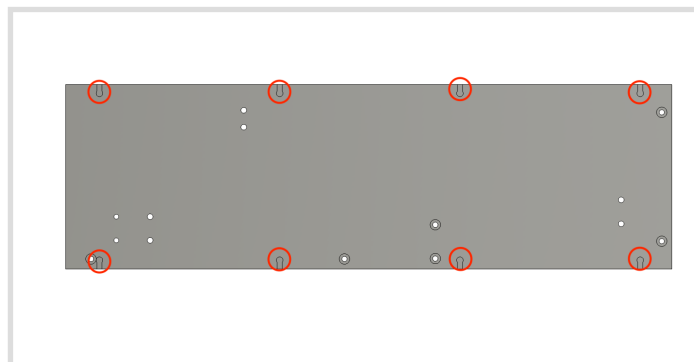
QTY	ITEM	Description/Notes
1	Bottom	
1	Top	
1	Driver Side	Goes on the Chassis Driver Side
1	Passenger Side	Goes on the Chassis Passenger Side
1	Center Divider	Only Goes On One Way
1	Back	Place row of holes towards the top of drawer system
2	Drawer Bottoms	Keyholes face down
2	Right Drawer Sides	
2	Left Drawer Sides	
2	Drawer Fronts	
2	Drawer Backs	
2	Wing Panels	*Depending on the make/model
2	Wings	*Depending on the make/model
2	Wing Supports	*Depending on the make/model

**\*Important Note: Do not over-tighten fasteners. They only need to be snug. Only use hand tools.**

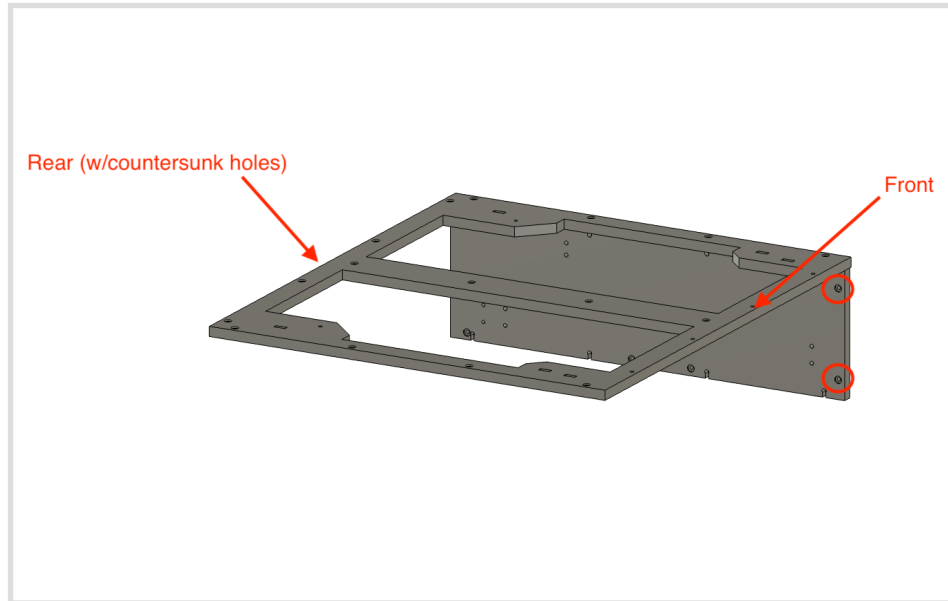
1. Begin by placing the bottom piece on your work space, with the countersunk holes facing toward you. The horizontal row of countersunk holes (circled in red) indicates the back (rear seat side) of the drawer system.



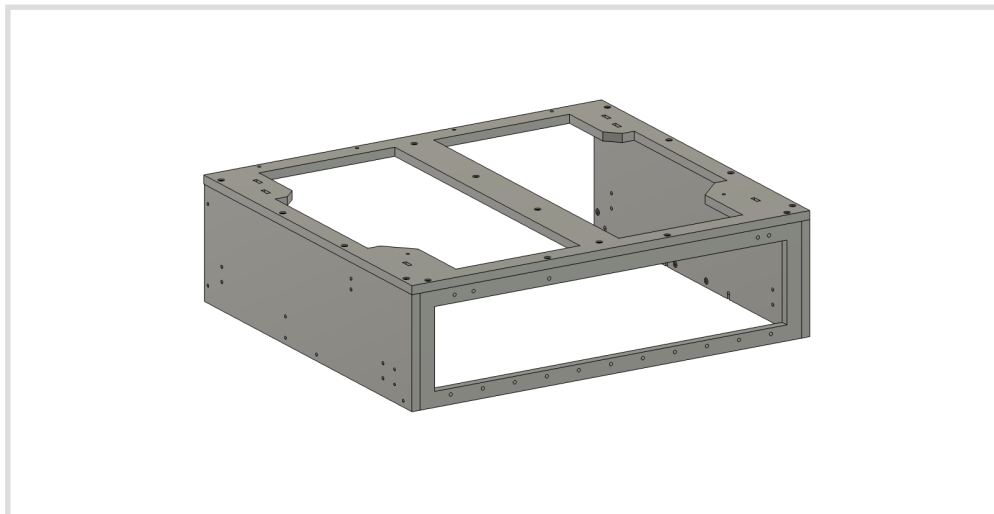
2. Grab the driver side panel and load the dowel holes with threaded dowels (the dowel holes are the end of the keyholes). Use a screw driver to line the threads up with the keyhole, the flathead slot should be facing out to make it accessible.



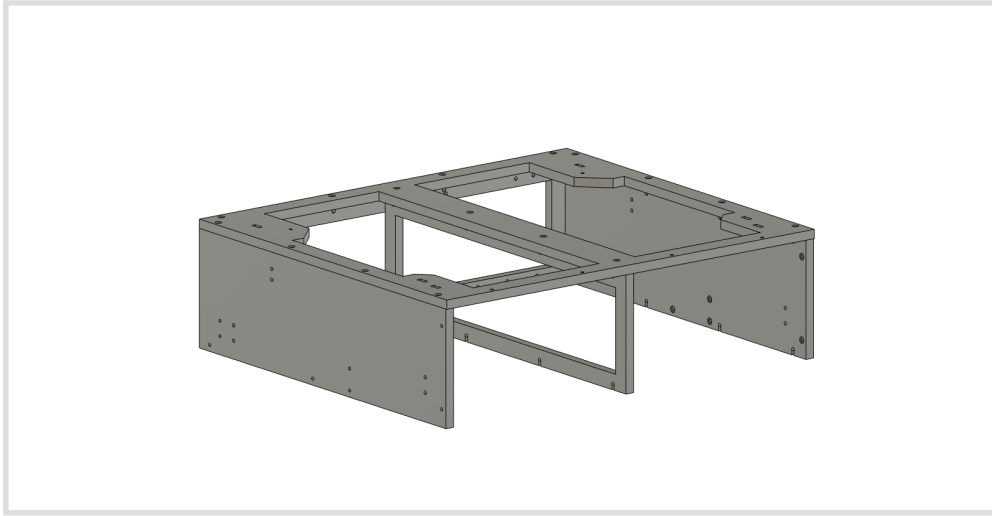
3. Attach the driver side panel to the drawer system bottom using the black 1/4-20 screws and a 5/32" Allen key. The silver dowels face the inside of the drawer system and the two countersunk holes are located at the front of the drawer system.



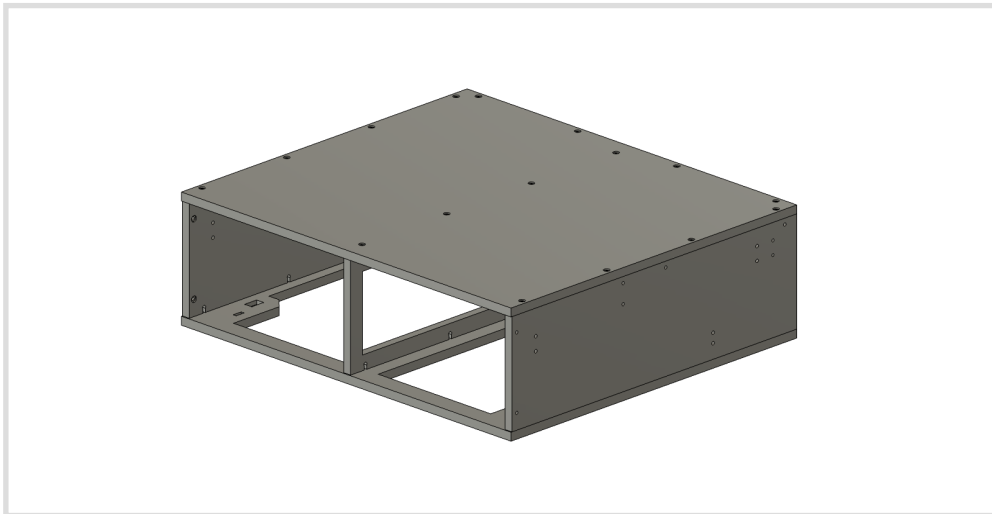
4. Attach the passenger side panel.
5. Attach the back panel after loading it with dowels. Make sure the row of holes faces down towards the workspace.



6. Attach the center divider after loading it with dowels. Note: the center divider only fits in one direction. If you find the holes do not line up then rotate/flip the piece until they do.

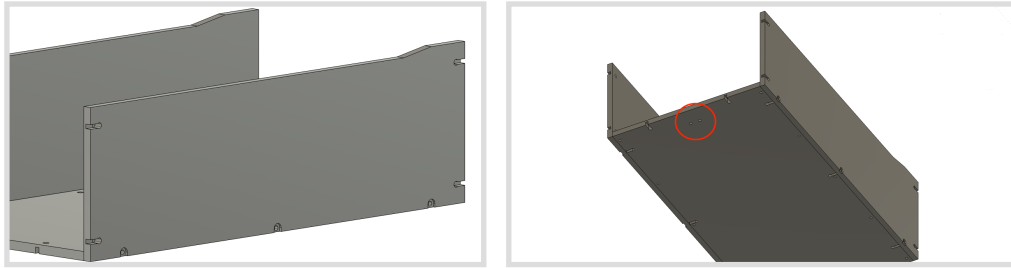


7. Flip the piece over and attach the top. Center the center divider by tapping it with a mallet.

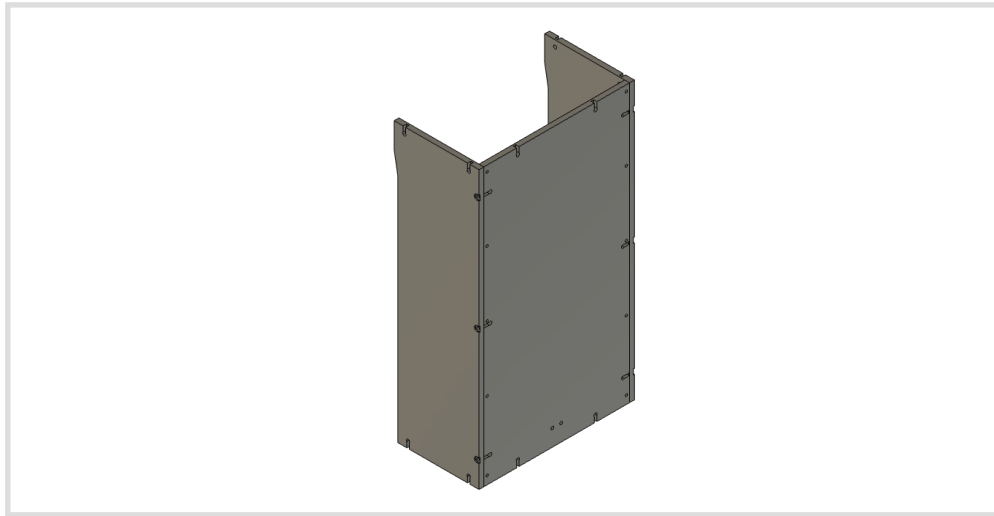


8. Congrats, the chassis is assembled!

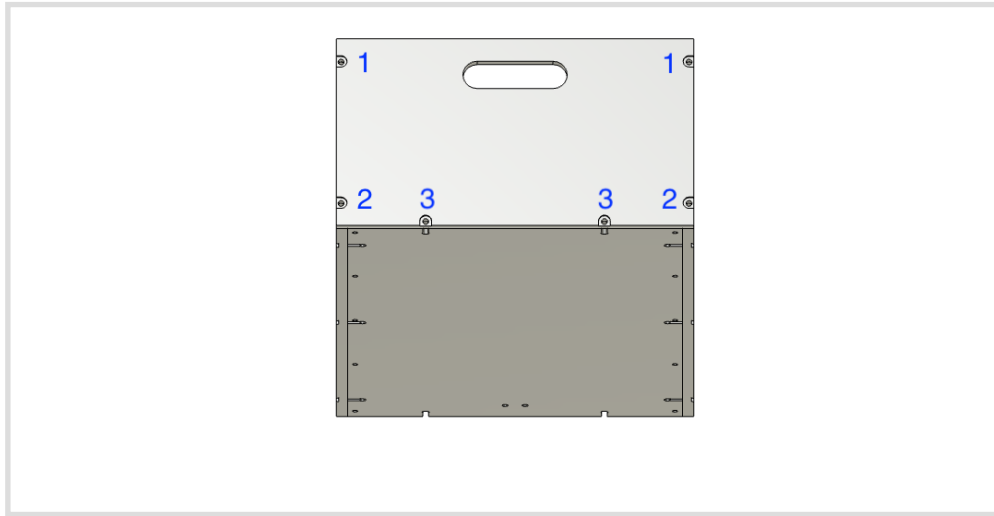
9. Grab a drawer bottom and load it with dowels. Attach a drawer side side to the bottom with the countersunk holes on the drawer side facing out. The drawer bottom dowels and sliders should be facing down. The two holes on the bottom of the panel need to line up with the front side of the drawer sides.



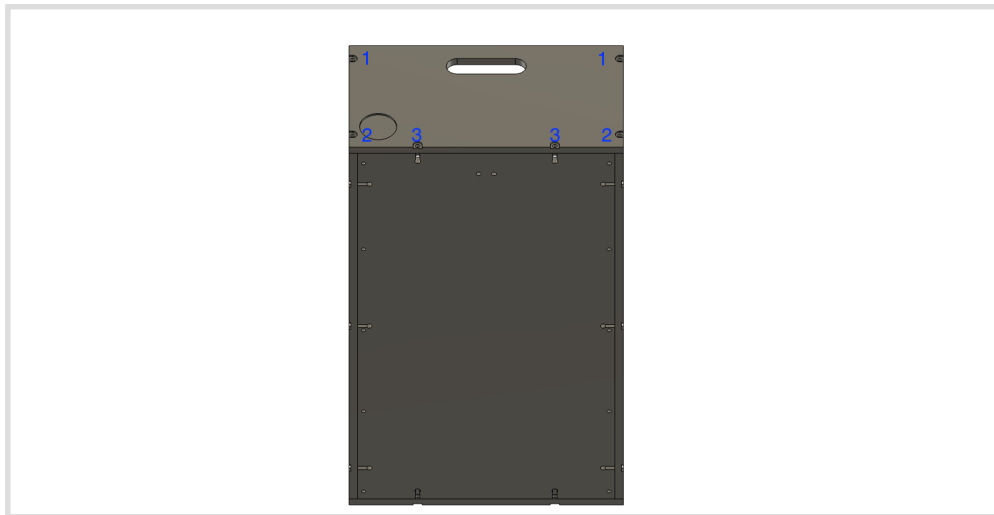
10. Attach the remaining side. Place the piece on the floor with drawer side risers facing up toward you.



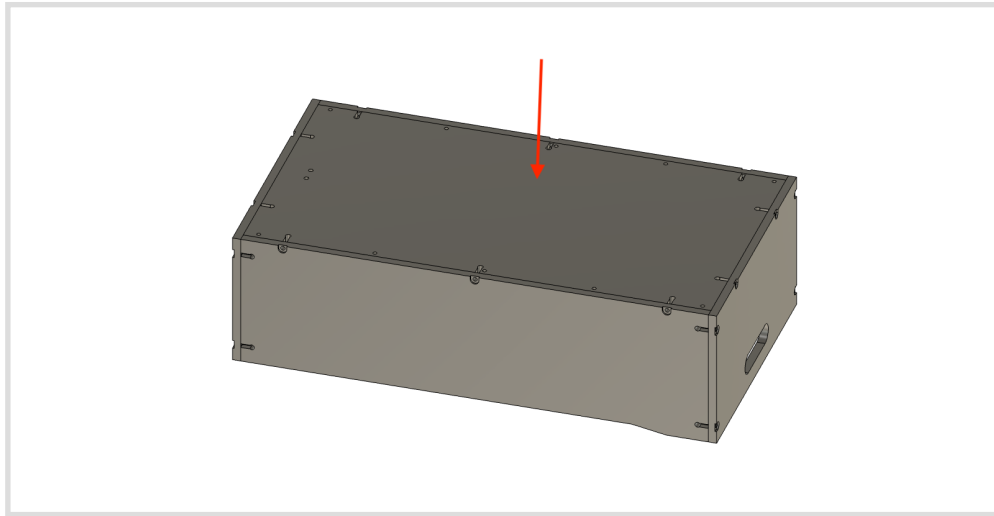
11. Load the drawer sides with dowels and attach the drawer back. Start with the top corners, then bottom corners. Finish off with the bottom two.



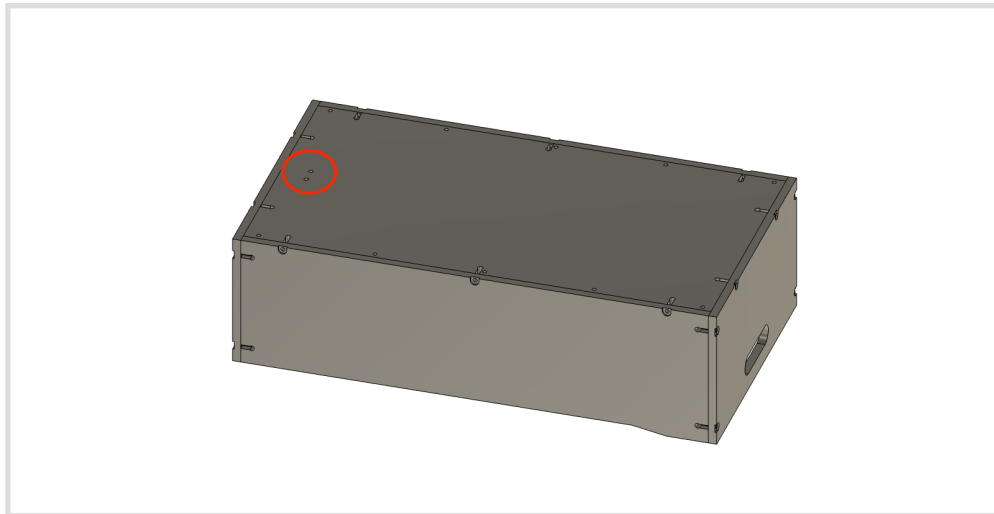
12. Flip the drawer over and do the same with the drawer front. Make sure all joints are lined up well.



13. Repeat steps 9-12 with the second drawer. Test fit the drawers in the chassis. If they are too tight then grab a soft mallet and tap the drawer bottom in. When tapping make sure to hit the drawer bottom where the dowels are installed. Tap evenly and softly. This will make the drawer shallower and should loosen the drawer up in the chassis. Do not hit the drawer bottom too far!



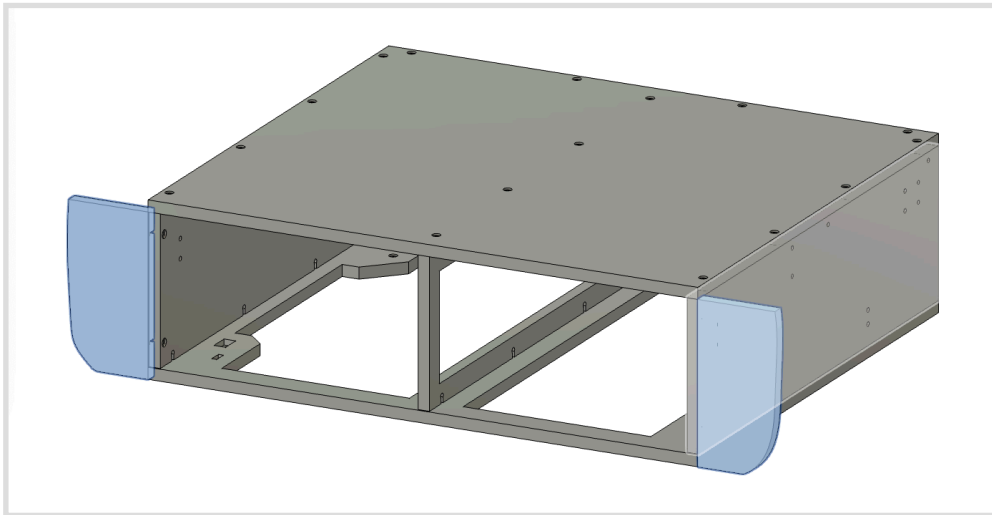
14. Attach the white locking wedges to the drawer bottom and use the slotted holes to adjust how snug the drawer locks into position.



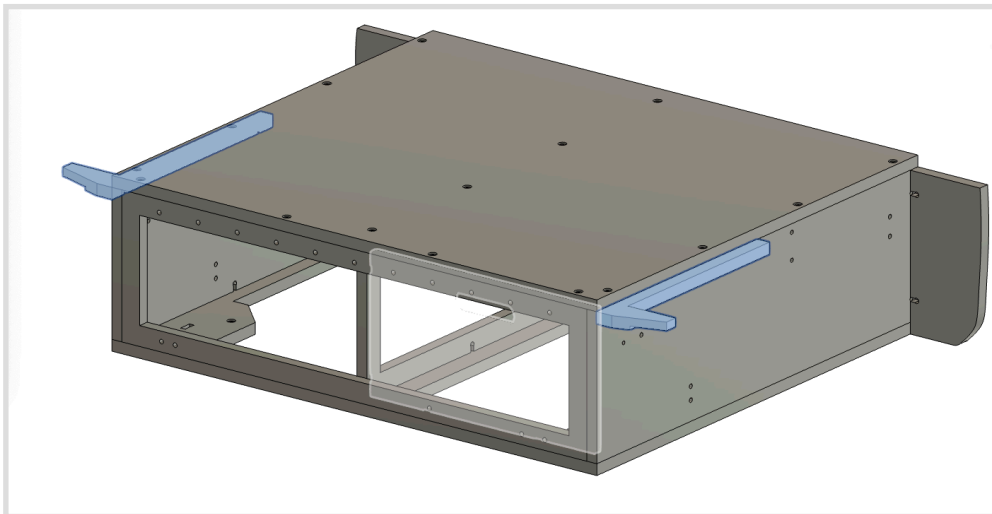
15. Place the drawer system chassis into the vehicle.



16. Attach the wing filler plates. The dowels face in towards the vehicle.



17. Attach the wing supports from the inside of the chassis at the rear. The dowels face down.



18. Install the drawers into the drawer chassis. Anchor the drawer system to the vehicle.

As always, call 859-749-8588 with any questions.