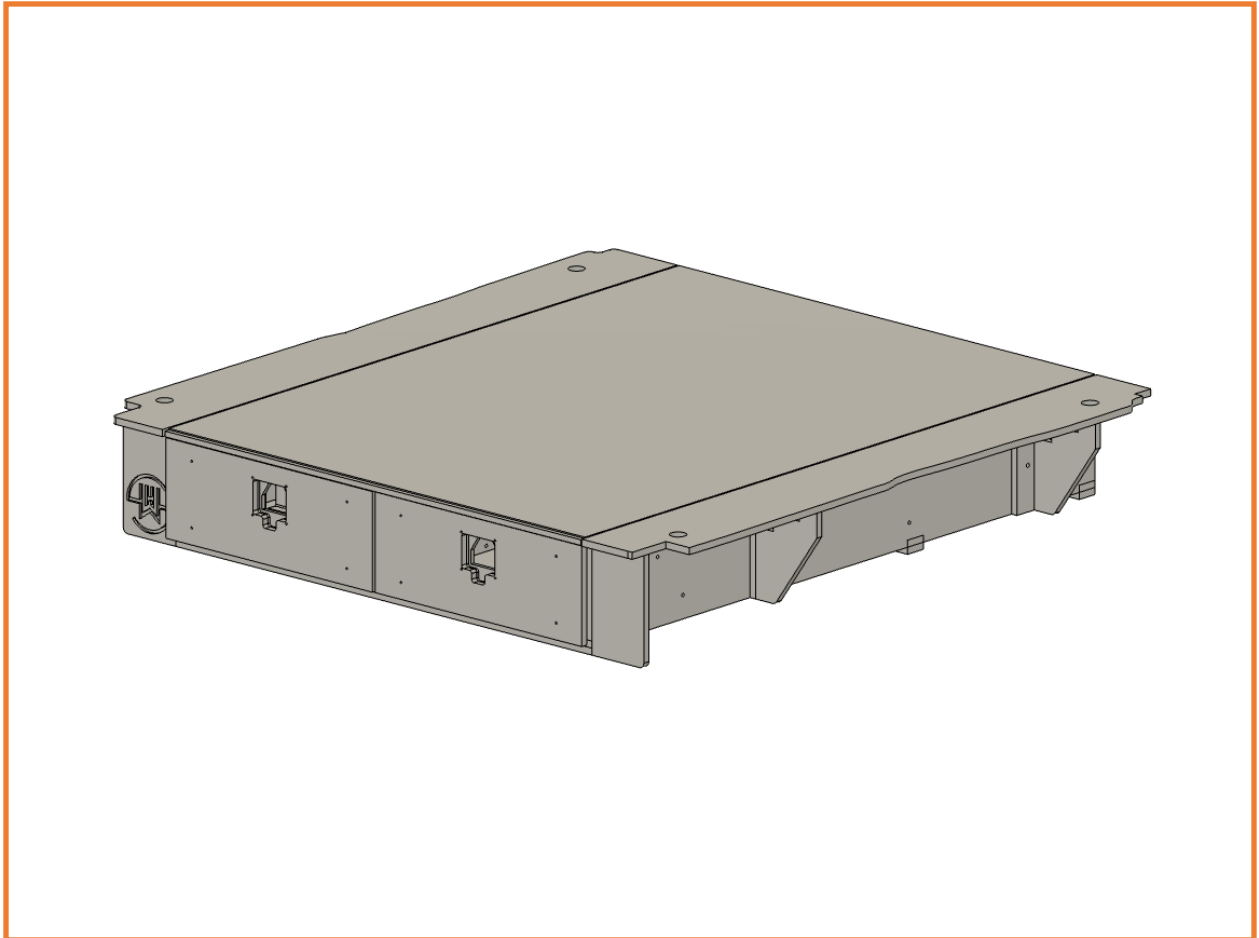
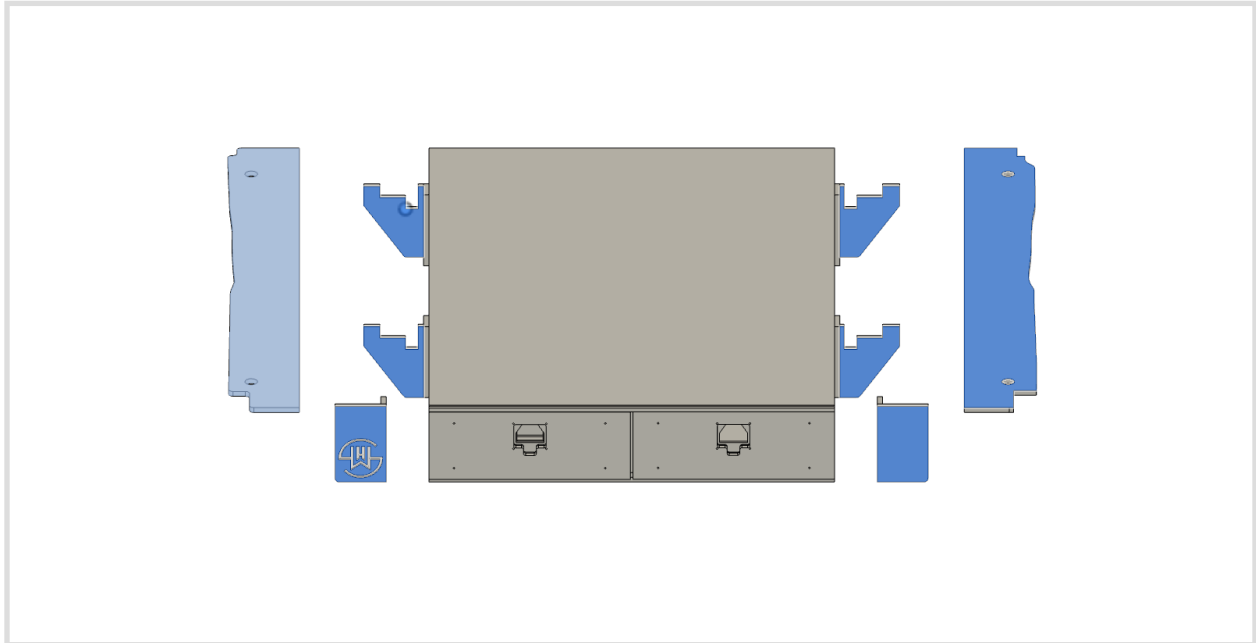


## SHW OFFROAD

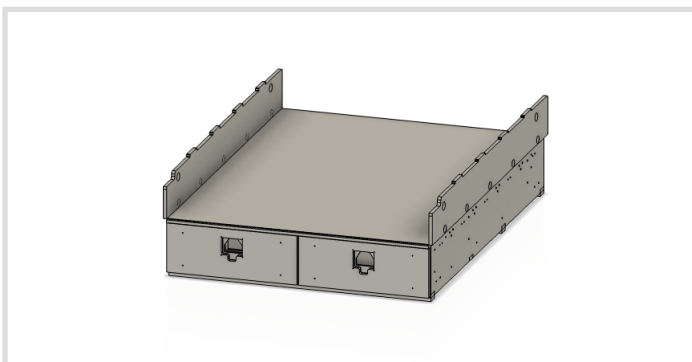
### 8th Gen Ford F150 Drawer System Install



1. Begin by organizing the wing caps and supports. There is a set for the driver side, and a set for the passenger side. They will be fastened to the drawer system using the included wing screws. Set them aside for now.

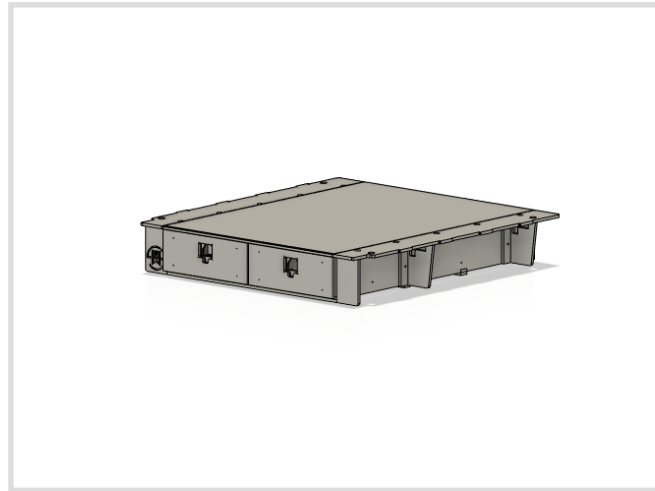
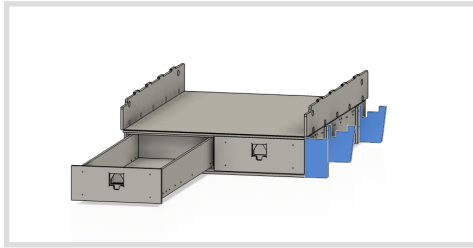


2. Remove the wings.
3. If equipped raise the Skinny Guy Camper to provide access to the bed tie downs.
4. Flip the wings in the upright position. Make sure to use the correct mounting holes. (Skip this step if installing with a Skinny Guy Camper). Wings should not be installed with a Skinny Guy Camper.



5. Slide the drawer system into the truck. It take two to tango.

6. Extend a drawer all the way out. Use the drawer as leverage to shuffle the system to the driver side. This will give you room to install the wing supports and the wing cap on the passenger side. Make sure the supports are in the correct orientation like the figure below. If installing under a Skinny Guy Camper then the wing supports are not needed.



7. Use the drawer as leverage to shuffle the system to the passenger side. BE CAREFUL NOT TO MOVE IT TOO FAR AND BREAK THE WING CAP YOU INSTALLED ON STEP 5. Once you have adequate room, install the wing supports and cap on the driver side.
8. Now center the drawer system in the truck.
9. Install the included turnbuckles. Snug them up, BUT DON'T TIGHTEN.
10. Once all the turnbuckles are snugged up, begin to tension them one at a time. They do not have to be very tight; DO NOT USE A WRENCH). Just beyond hand tight is plenty. Tighten them a little at a time at each corner. When you are done they should be just tight enough that you cannot move the drawer system in the truck. We recommend some blue locktite on the turnbuckles to keep them from coming loose over time.
11. Test all wings and drawers to make sure they function as intended.
12. Enjoy the drawer system!

As always, call 859-749-8588 with any questions.