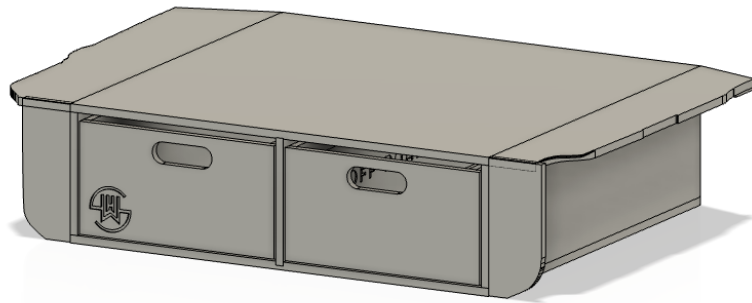
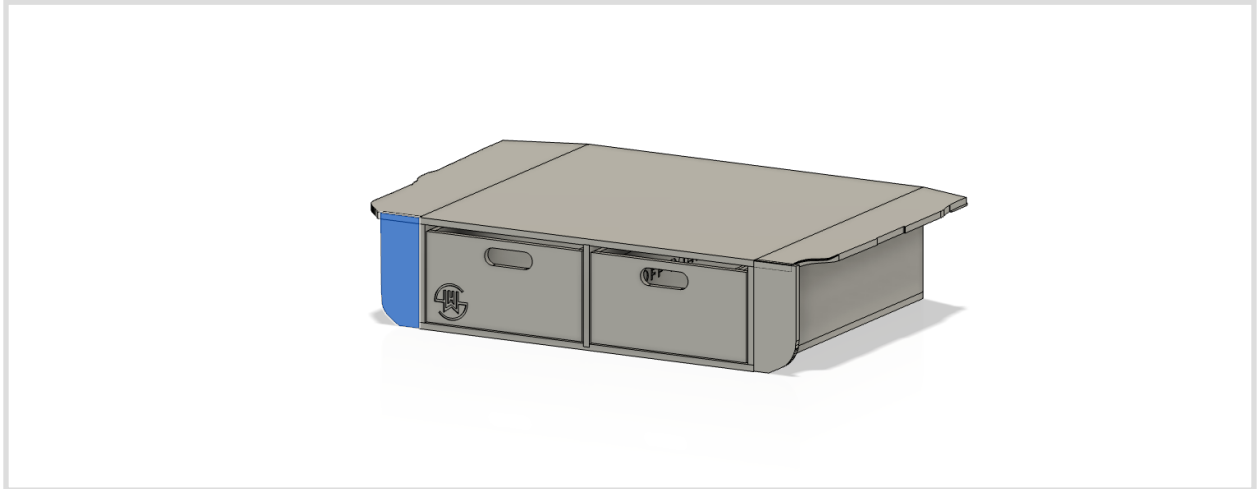


SHW OFFROAD

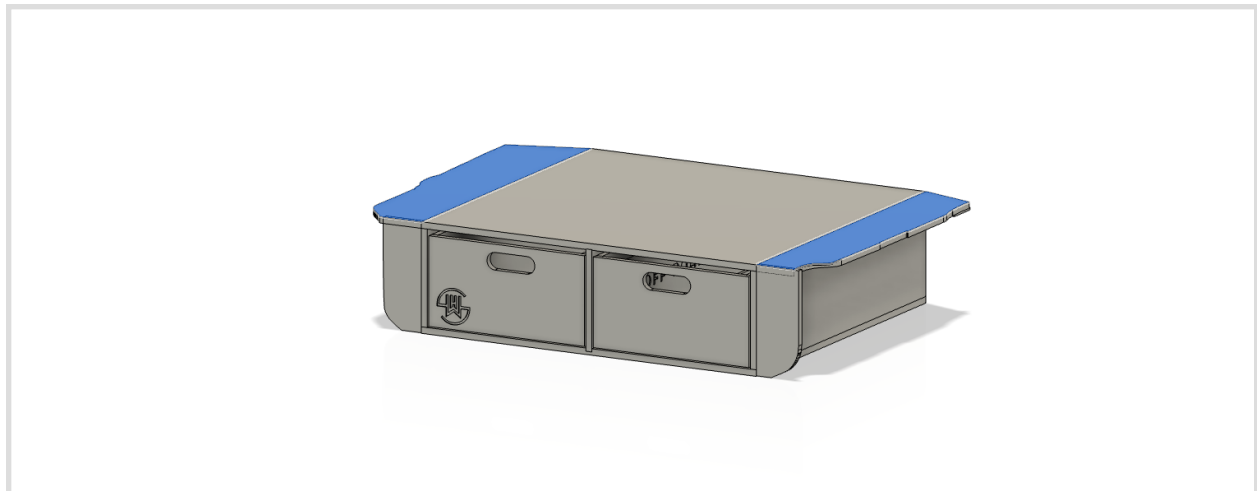
## 100 Series Land Cruiser Drawer System Install



1. Begin by removing the third row seats from the vehicle.
2. Install one of the wing caps of the system using the existing holes and the included screws.

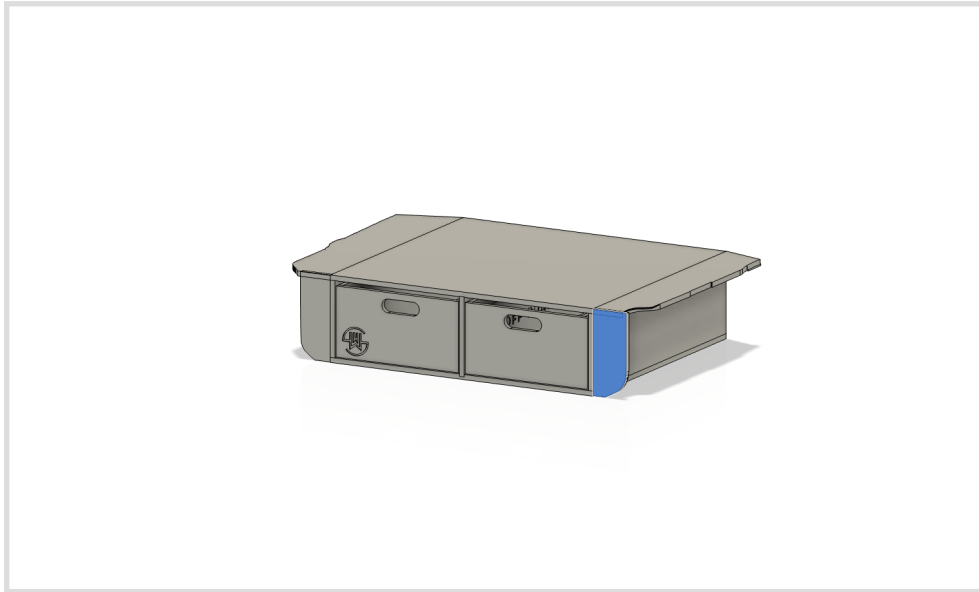


3. Install the wings of the systems using the quick release hinges. Start the top hooks with the wing in the upright position. Slowly lower the wing until the hooks fall into place, then press on the bottom of the hinge to latch it. Check out our wing install guide for more info: <https://shwoffroad.com/wp-content/uploads/2023/03/SUV-Wing-Install.pdf>



4. Put the wings in the upright position and slide the system into the vehicle.

5. Install the the remaining filler plate.



6. Line up the system and loop the included straps through the factory tie down loops and up to the tie down d rings on the drawer system.
7. Cut the extra material of the straps leaving some excess to use to pull them tight in the future. Use a flame to melt the end of the strap and keep it from fraying.
8. Enjoy the drawer system!

As always, call 859-749-8588 with any questions.