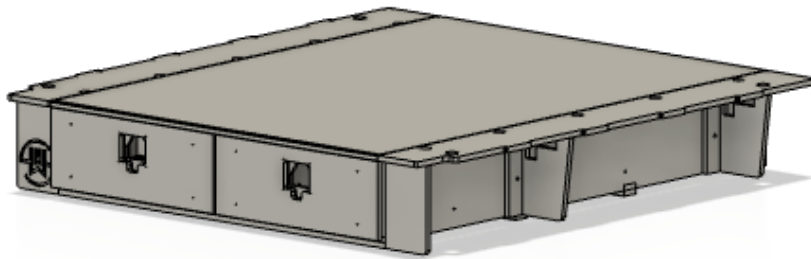
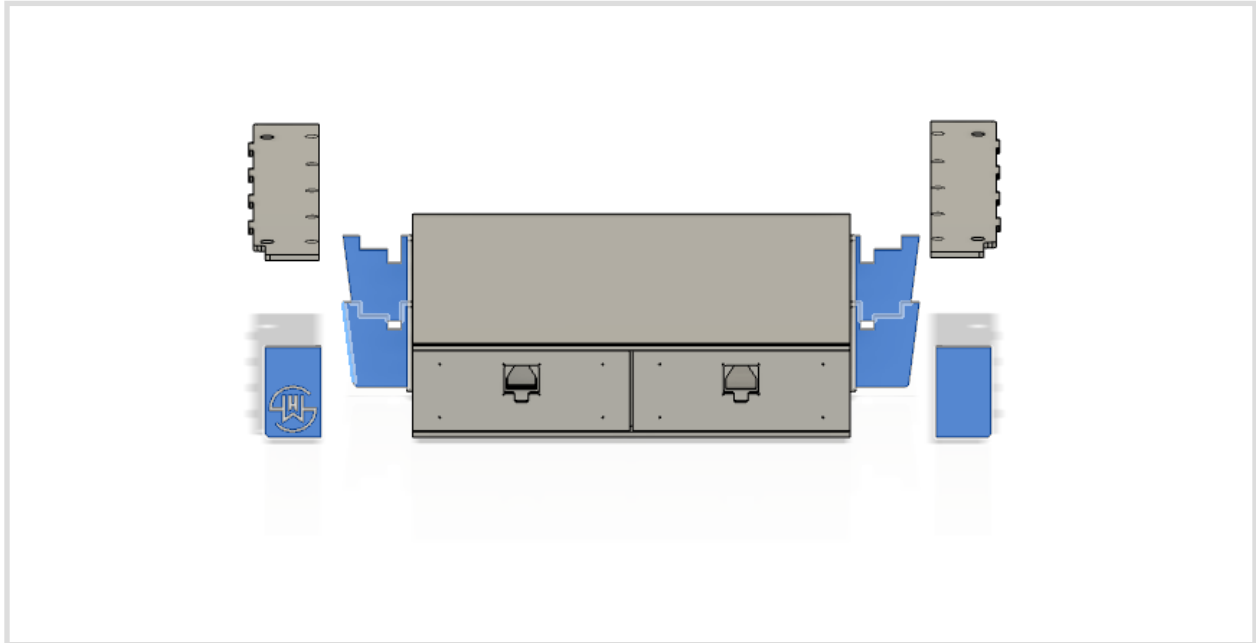


# SHW OFFROAD

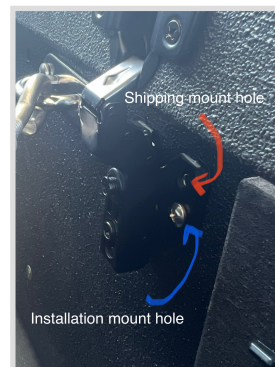
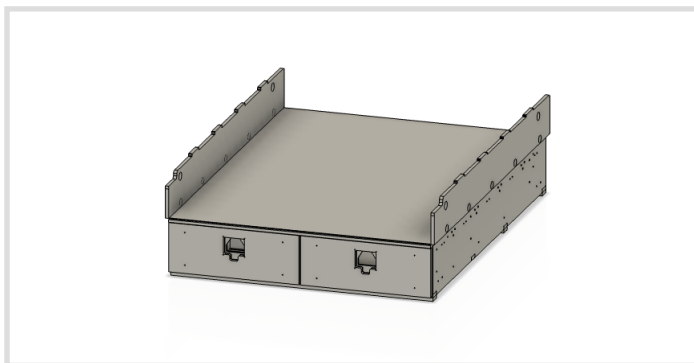
## 3rd Gen Tundra Drawer System Install



1. Begin by organizing the wing caps and supports. There is a set for the driver side, and a set for the passenger side. They will be fastened to the drawer system using the included wing screws. Set them aside for now.

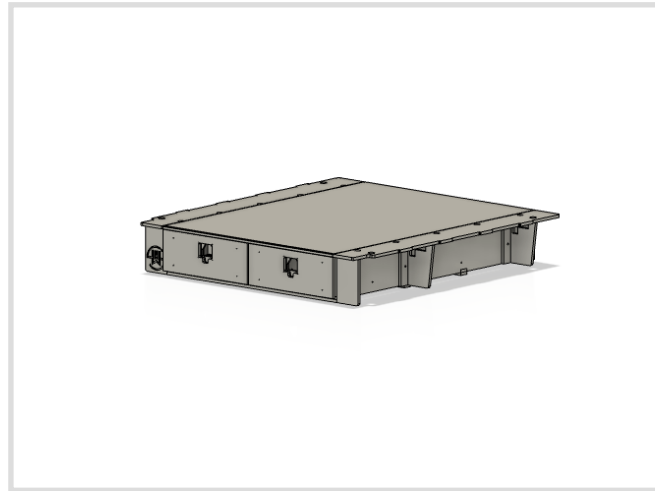
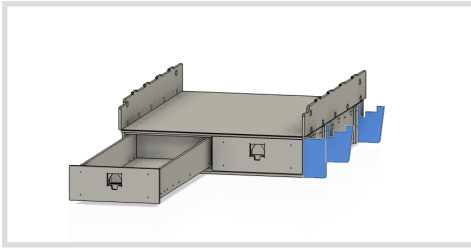


2. Remove the wings. They should already be installed to the drawer system, but they are upside down. Reinstall them in the right orientation.
3. Flip the wings in the upright position. Make sure to use the correct mounting holes.



4. Slide the drawer system into the truck.

5. Extend a drawer all the way out. Use the drawer as leverage to shuffle the system to the driver side. This will give you room to install the wing supports and the wing cap on the passenger side. Make sure the supports are in the correct orientation like the figure below.



6. Use the drawer as leverage to shuffle the system to the passenger side. **BE CAREFUL NOT TO MOVE IT TOO FAR AND BREAK THE WING CAP YOU INSTALLED ON STEP 5.** Once you have adequate room, install the wing supports and cap on the driver side.
7. Now center the drawer system in the truck. Look down the truck bed to be sure the gap between the wing and bed side is the same on each side.
8. Install the included turnbuckles. Snug them up, **BUT DON'T TIGHTEN.**
9. Once all the turnbuckles are snugged up, begin to tension them one at a time. They do not have to be very tight. Just beyond hand tight is plenty. Tighten them a little at a time at each corner. When you are done they should be just tighten enough that you cannot move the drawer system in the truck. We recommend some blue locktite on the turnbuckles to keep them from coming loose over time.
10. Test all wings and drawers to make sure they function as intended.
11. Enjoy the drawer system!

As always, call 859-749-8588 with any questions.